

2019  
Wayne Memorial Hospital  
Community Health  
Needs Assessment

---

Report and User Guide

---

Pike and Wayne Counties and  
Adjacent Underserved  
Communities, PA

## Table of Contents

Forward	2
1. Community Served	4
2. Community Health Needs Assessment Process	6
a. Data and information	
b. Data collection and analysis	
c. Collaborative capacities	
3. Community Participation	14
a. Broad-based participation	
b. Organizational participants	
c. Underserved populations	
4. Significant Health Needs and the Prioritization Process	17
5. Potential Resources	21
6. Impact on 2016 Community Health Needs Assessment	22
7. Supportive Data Sets	24
a. Internet Survey	
b. Survey and Interview Content Summary	
c. Resources – Maps and Listings	
d. Statistical Analyses	

This Report and the Summary of the 2019 Community Health Needs Assessment are available for downloading at [www.wmh.org](http://www.wmh.org) or inspection at Wayne Memorial Hospital. Comments are invited and appreciated.

## Forward

This Report and User Guide provides detailed information on many aspects of the 2019 assessment. The Report is organized according to Community Health Needs Assessment reporting requirements of the federal Internal Revenue Service and the Supportive Data Sets may be most useful in that they provide information and analytics upon which assessment findings were based.

New features for this 2019 assessment include:

The addition of an eighth community of interest – Forest City

- A thorough examination of the needs of the elderly and disabled through a Medicare use analysis
- The use of PA rural county benchmarks in addition to regional comparisons in selecting significant needs
- Consideration of social factors effecting health status and Wayne Memorial Hospital's participation in the Pennsylvania Department of Health Rural Health Model initiative

Key significant needs are identified for the region, each county and and community in the service area. Several address behavioral health and unmet need for specialty services. These needs had overwhelming support from key health care and community leadership as well as the public at large.

Although the general findings for the region were unremarkable, specific needs emerged for chronic disease, especially cancer and heart disease, and the need to reinforce the importance of the preventive health care services on the quality of life and cost impacts of chronic conditions. Social influences were viewed as key concerns in four of the eight communities and chronic disease concerns were present for all eight. The 2016 assessment and implementation strategy resulted in improvements in many areas including the treatment of chronic disease, mental illness, tick borne illnesses and access to primary care.

The assessment is intended to promote dialogue around needs and collaborative solutions with partner agencies with the overall objective of improving community health. We at Wayne Memorial Hospital look forward to continue working with you to address the needs of our community.

## Contacts

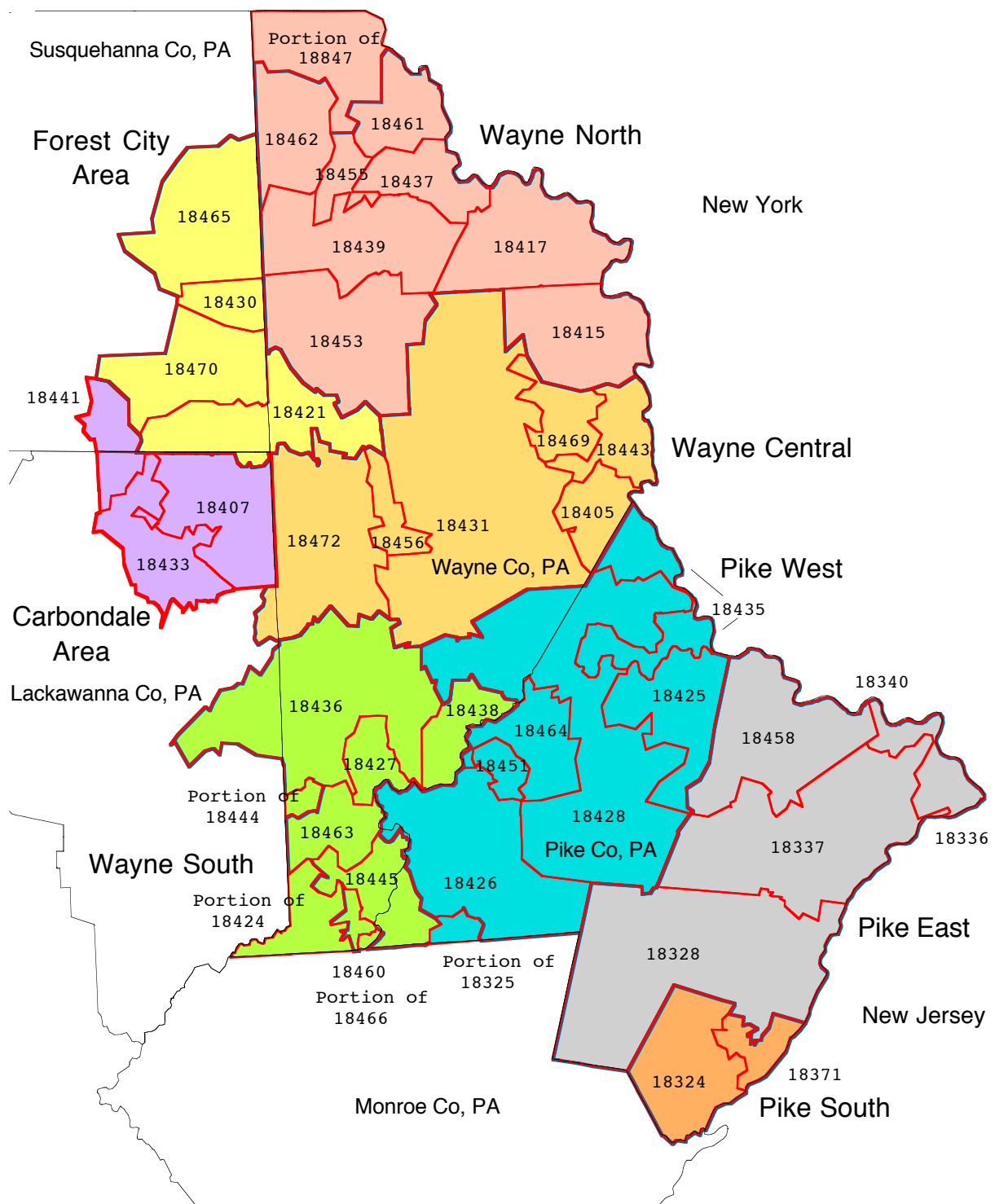
John R. Dennis  
Executive Director  
Wayne Memorial Health Foundation  
601 Park Street  
Honesdale, PA 18431  
Phone: (570) 251 – 6533  
Fax: (570) 253 – 8993  
Email: [dennis@wmh.org](mailto:dennis@wmh.org)

Prepared by HMS Associates  
Gregory Bonk, President  
P O Box 374  
Getzville, NY 14068  
Web: [www.askhms.com](http://www.askhms.com)  
Tel: (716) 868 – 6448  
Fax: (716) 689 – 6038  
Email: [gregorybonk@me.com](mailto:gregorybonk@me.com)

## 1. Community Served

- Wayne Memorial Hospital provides health care services to residents of a four county region in northeastern Pennsylvania which borders the states of New York to the north and New Jersey to the east. Wayne Memorial Hospital is a full service hospital and Wayne Memorial Community Health Centers is a federally qualified health center (FQHC) and a key provider of community health and behavioral health care services in the area. Eight different communities, six which are located in either Pike or Wayne counties, PA, and two of which are located in Lackawanna and Susquehanna counties, make up this service area. Individual community based assessments were conducted because of the vastly different characteristics of the communities, some of which relate to health disparities, and the different extents to which they rely upon Wayne Memorial for health care services.
- Eight Communities - 132,033 people (2024 Forecast)
  - Carbondale Area (CA) – 20,465
  - Forest City (FC) – 7,906
  - Pike East (PE) – 27,935
  - Pike South (PS) – 11,061
  - Pike West (PW) – 19,390
  - Wayne Central (WC) – 22,915
  - Wayne North (WN) – 4,461
  - Wayne South (WS) – 17,720
- Community boundaries are based upon zip code adjacency, population size, natural fit, and hospital preference. The service area is approximately 100 miles in length from northwest to southeast corners. Population density for the Carbondale area is significantly higher (2,740 persons per square mile versus an average of 89 persons per square mile for Pike and Wayne Counties) than other communities.
- The population is projected to decline by 1% between 2019 and 2024.
- The map on the following page depicts the area and these different communities.

Exhibit 1 – Map of Service Area Communities



## 2. Community Health Needs Assessment Process

### a. Data and information

Both normative and qualitative data were used in the assessment. Normative data was obtained from 8 major secondary sources and qualitative data was obtained primarily through the Community Health Needs Internet Based Survey and interviews with community and health care leadership throughout the service area. A brief description of these normative sources follows:

- Demographics – 2019 and 2024 Projections or Forecasts (Claritas) – County and Community
- Birth Certificate Reports, 2014 through 2016 – Pennsylvania Department of Health\* – County and Community
- Death Certificate Reports, 2014 through 2016 – Pennsylvania Department of Health\* – County and Community
- Acute Care Hospital Discharge Abstract Reports\*\* for 2017 and 2018
- Medicare Claims Data – US Department of Health and Human Services (DHHS), Health Research and Services Administration (HRSA) - County, Office of Minority Health (OMH) - 2016
- Health Needs Internet Survey (893 completed surveys), May 2019 – County and Community – HMS Associates, Getzville, NY
- Community Leadership and Consumer Conversations (43 individuals; 10 locations), May 2019 – HMS Associates, Getzville, NY
- Listing of Resources – May 2019, ReferenceUSA

Key analyses and related documents that were reviewed included County Profiles for 2017 prepared by the Pennsylvania Department of Health. Data in the 2017 Pennsylvania Youth Study (PAYS) documents alcohol, tobacco and other drugs (ATOD) trends and needs in the area for Pike and Wayne County Youth.

Data limitations in general pertained to small size of some communities, different reporting periods, and reporting incongruities.

### b. Data Collection and Analysis

The multi-faceted needs assessment methodology used both quantitative or normative inputs and qualitative data. Given the size and considerable differences in community demographics in the service area (for example, Pike East is a weekend commuter community within 85 miles of the greater New York City area; Wayne North, a rural isolated community; and Carbondale, a small city), a major feature of the assessment was that analyses were done at the community or sub-county level.

\* Pennsylvania Department of Health REQUIRED DISCLAIMER: "These data were provided by the Bureau of Health Statistics and Research, Pennsylvania Department of Health. The Department specifically disclaims responsibility for any analyses, interpretations or conclusions."

\*\* Analysis pending.

Hence a key requirement for the majority of quantitative data sources and subsequent analyses was the availability of data at the zip code or zip code aggregate level. Community level analyses were critical in achieving significant need selection which recognized major differences in the eight communities within the overall service area and did not obscure the needs of small communities which are often overshadowed by inclusion in larger population centers.

#### Quantitative\*

HMS' Primary and Preventive Health Care Services Need Methodology was used to quantitatively assess variations in community need due to demographic, reproductive health, chronic disease and access to care characteristics.

This is a quantitative method developed by HMS Associates over the past twenty years, beginning with HMS' work in assisting county health departments and general hospitals in New York State with their regulatory needs assessment responsibilities in the 1990s. The methodology's utility is in part based upon its ability to develop and apply relevant benchmarks for assessing significant variation across multiple data sources at zip code-based community or rural county levels. Significance, as a result, is defined by rank or comparative standing. The methodology has eight components and a total of 100 indicators.

The analysis models the standard Medical Underserved Area or Community (MUA or MUC) metric and draws on data from demographic sources, vital statistics reports and hospital and health care services utilization and costs. Aspects of the analysis have been applied to assessment projects in Arizona, Kansas, Michigan, New York, New Jersey, Pennsylvania, and Tennessee.

The data sources are listed on the previous page. Data sets at the county, zip code or aggregate zip code level were requested directly from those sources. Key variables in the data sets by component are listed in Exhibit 2 - Quantitative Components and Indicators. For this study, benchmarks included the nine counties in Pennsylvania Health Care Cost Containment Council Region 6 and community level analyses were based on the eight communities in the study. County or community values in the poorest 25 to 30% of those studied warrant consideration as an indication of high need.

Two enhancements were added to the quantitative component of the assessment for 2019. Claims based all provider Medicare utilization data and associated indicators on risk adjusted cost, ED utilization, avoidable inpatient use, prevalence and preventive health care services use were added for regional and county based analyses. Secondly, regional and county based analyses also examined each geography's standing relative to 31 rural counties in Pennsylvania. These new metrics and benchmarks helped to pinpoint significant needs.

\*See Supportive Data Sets Section for Detailed Analytical Findings



## Exhibit 2 – Quantitative Components and Indicators

<b>All POPULATIONS</b>	<b>ORIGINAL MEDICARE</b>
<b>Social Determinants (6)</b>	<b>Chronic Conditions (14)</b>
People over 25 years of age, Less than High School Diploma	0 of the claims-based conditions
People over age 65	1 of the claims-based conditions
Families Below Poverty	2 of the claims-based conditions
Families Below Poverty, Single Head of Household with Children	3+ of the claims-based conditions
Female: Age 15-44	Acute myocardial infarction
Population Not White	Alzheimer's Disease, Related Disorders, or Senile Dementia
<b>Reproductive Health (9)</b>	Atrial fibrillation
No First Trimester Prenatal Care	Cancer, Colorectal, Breast, Prostate, Lung
Low birth weight: 1,500 to 2,500 Grams	Chronic kidney disease
No HS Diploma	Chronic obstructive pulmonary disease
Pre-pregnancy – Obese	Depression
Pre-pregnancy - Overweight	Heart failure
Pre-pregnancy - Underweight	Schizophrenia and other psychotic disorders
Pregnancy Smoker	Stroke/Transient Ischemic Attack
Unmarried: 19 and Under	<b>Emergency Department Use (16)</b>
Unmarried: All ages	0 of the claims-based conditions
<b>Major Illnesses - Death Rates (17)</b>	1 of the claims-based conditions
Accidents: All	2 of the claims-based conditions
Accidents: Non- Transport	3+ of the claims-based conditions
Alzheimer's Disease	All Emergency Department Visits
Cancer (Malignant Neoplasms): All Other Sites	Alzheimer's Disease, Related Disorders, or Senile Dementia
Cancer (Malignant Neoplasms): Colon and Rectum	Atrial fibrillation
Cancer (Malignant Neoplasms): Lung and Bronchus	Cancer - Colorectal
Cancer (Malignant Neoplasms): Total Malignant Neoplasms	Cancer - Lung
Cerebrovascular Disease	Cancer, Colorectal, Breast, Prostate, Lung
Chronic Lower Respiratory Disease	Chronic kidney disease
Diabetes Mellitus	Chronic obstructive pulmonary disease
Diseases of Heart: Acute Myocardial Infarction	Depression
Diseases of Heart: Ischemic Excl. Acute Myocardial Infarction	Heart failure
Diseases of Heart: Other Heart Disease	Schizophrenia and other psychotic disorders
Diseases of Heart: Total Diseases of Heart	Stroke/Transient Ischemic Attack
Influenza & Pneumonia	
Intentional Self-harm (Suicide)	
Nephritis, Nephrotic Syn. & Nephrosis	

## Exhibit 2 – Quantitative Components and Indicators - Continued

<b>ORIGINAL MEDICARE</b>
<b>Preventable Inpatient Use</b>
<b>Prevention Quality Indicator (PQI) (12)</b>
Prevention Quality Acute Composite (PQI #91)*
Prevention Quality Chronic Composite (PQI #92)
Prevention Quality Overall Composite (PQI #90)
Bacterial Pneumonia (PQI #11)
COPD or Asthma in Older Adults (PQI #5)
Dehydration (PQI #10)
Diabetes Long-term Complications (PQI #3)
Diabetes Short-term Complications (PQI #1)
Heart Failure (PQI #8)
Hypertension (PQI #7)
Uncontrolled Diabetes (PQI #14)
Urinary Tract Infection (PQI #12)
<b>Outpatient – Preventive Services Use (10)</b>
Annual Wellness Visit
Bone Mass Measurement
Cardiovascular Disease Screening
Influenza Virus Vaccine
Initial Preventive Physical Examination (IPPE)
Pneumococcal Vaccine
Prostate Cancer Screening
Screening Mammography
Screening Pap Test
Screening Pelvic Examination)
<b>Risk Adjusted Cost (Premium) (16)</b>
0 of the claims-based conditions
1 of the claims-based conditions
2 of the claims-based conditions
3+ of the claims-based conditions
Acute myocardial infarction
Alzheimer's Disease, Related Disorders, or Senile Dementia
Atrial fibrillation
Cancer - Colorectal
Cancer - Lung
Cancer, Colorectal, Breast, Prostate, Lung
Chronic kidney disease
Chronic obstructive pulmonary disease
Depression
Heart failure
Schizophrenia and other psychotic disorders
Stroke/Transient Ischemic Attack

### Qualitative

Qualitative data on community opinions and views, indicative in part of a community's readiness for program development or expansion, were gathered from an internet based survey with 47 questions and 947 respondents as well as from unstructured face-to-face interviews with 43 individuals at 11 locations in the region.

Over 40 organizations distributed email invitations to their constituents for the survey and it was advertised in local media. Participation was incentivized through a drawing for one of five \$100 gift cards. Survey completion rate was high with 895 or 94.5% of total responses and approximately 1/3 of respondents provided comments.

PRAPARE questions were added to the survey to help to assess additional social factors and supportive services needs in the respondents. These questions come from the national PRAPARE social determinants of health assessment protocol, developed and owned by the National Association of Community Health Centers (NACHC), in partnership with the Association of Asian Pacific Community Health Organization (AAPCHO), the Oregon Primary Care Association (OPCA), and the Institute for Alternative Futures (IAF). For more information, visit [www.nachc.org/prapare](http://www.nachc.org/prapare)."

Major topics and number of survey questions are listed below and Exhibit 3 lists survey questions..

Major Topics	# of Questions
Primary Care Target Groups	1
Children and Youth Needs	3
Demographics	9
ER Access	1
Health or Behavioral Service Needs	1
Primary Care Access	3
Quality of Care	3
Social Environment	6
Specialty Care Needs	4
Supportive Services Needs	1

## Exhibit 3 – Internet Survey Questions

## Question

Q1: What is your age?

Q2: Sex at birth?

Q3: What is your sexual orientation?

Q4: Are you currently employed in or retired from the health care, prevention, behavioral health, dental care or human services areas?

Q5: If you checked none of the above in the last question, please indicate your current type of employment or type of employment before you retired.

Q6: Are you full time or part time resident of Lackawanna, Pike, Susquehanna or Wayne Counties? If so, please so indicate which AND the length of time during which you were either full or part time resident.

Q7: In what area of the region do you reside? Please refer to the map above.

Q8: How did you learn about this survey?

Q9: Are you completing this survey online or internet?

Q10: Do you have a family doctor/primary care practitioner?

Q11: If yes, was your last medical appointment?

Q12: The last time you needed to schedule an appointment with your primary care provider, was it scheduled to occur within:

Q13: Please rate the following services based on your view of the need for additional capacity (outpatient, unless otherwise indicated), i.e., more doctors, nurses, health, mental health, or dental health related practitioners or clinics.

Q14: Please rate the following supportive services based on your view of the need for additional capacity.

Q15: Please indicate which population groups are in need of additional primary care services.

Q16: Please rate the importance of the following aspects of health care services:

Q17: Have you or your family recently gone to a hospital ER in these cities for care? If so, please indicate where and approximately how often.

Q18: What types of specialty health care services are most needed in the area?

Q19: Have you or your family gone outside of the area for specialty care?

Q20: Please indicate where specialty care was received outside the area and how often where applicable.

Q21: Which type(s) of specialty care did you receive outside the area and were they delivered to you as an inpatient or outpatient?

Q22: We are concerned about the needs of children and youth in the area. Please rate the following topics?

the past year, have you been afraid of your partner or ex-partner?

Q23: Which groups have unmet need in the area for children and youth behavioral health services?

Q23: Which groups have unmet need in the area for children and youth behavioral health services?

Q24: Which services are most needed for children and youth?

### Exhibit 3 – Internet Survey Questions

Q25: Quality of care has been shown to improve in hospitals which are designed to be more pleasant, comfortable and supportive of patients and their families. Please rate the following hospital physical characteristics, 1 through 6, with six being the most harmful, which you think decreases the quality or effectiveness of your care during a hospital stay.

Q26: Over the past five years, do you feel the the quality of services locally has improved, remained the same or declined?

Q27: Please rate the importance of the following organizations or groups in promoting healthy lifestyles.

#### PRAPARE QUESTIONS FOLLOW

Q28: Are you Hispanic or Latino?

Q29: Which race(s) are you? Check all that apply.

Q30: At any point in the past 2 years, has seasonal or migrant farm work been your or your family's main source of income?

Q31: Have you been discharged from the armed forces of the United States?

Q32: What language are you most comfortable speaking?

Q33: How many family members do you currently live with?

Q34: What is your housing situation today?

Q35: Are you worried about losing your housing?

Q36: What is the highest level of school that you have finished?

Q37: What is your current work situation?

Q38: What is your main insurance?

Q39: During the past year, what was the total combined income for you and the family members you live with?

Q40: In the past year, have you or any family members you live with been unable to get any of the following when it was really needed?

Q41: Has lack of transportation kept you from medical appointments, meetings, work, or from getting things needed for daily living

Q42: How often do you see or talk to people that you care about and feel close to? (For example: talking to friends on the phone, visiting friends or family, going to church or club meetings)

Q43: Stress is when someone feels tense, nervous, anxious, or can't sleep at night because their mind is troubled. How stressed are you?

Q44: In the past year, have you spent more than 2 nights in a a row in a jail, prison, detention center, or juvenile correctional facility?

Q45: Are you a refugee?

Q46: Do you feel physically and emotionally safe where you currently live?

Q47: In the past year, have you been afraid of your partner or ex-partner?

During the interview process, participants were asked to discuss their view of the community's most pressing or emerging needs as well as any potential responses to those needs, occurring or planned to occur in the next year. Needs were explored in terms of number of people affected, history of onset of the need, and potential causative factors. Content analysis was conducted on the data from the unstructured interviews and on responses to the general comment section of the internet survey. The results of the analyses are described in the Summary of the 2019 Assessment at [www.wmh.org](http://www.wmh.org) and the Supportive Data Sets section of this report.

### 3. Collaborative Capacities

There were no formal linkages with organizations conducting current or recent community health needs assessments or studies in the area. Formal collaborative partners for the assessment were Wayne Memorial Hospital, Wayne Memorial Community Health Centers (WMCHC) and HMS Associates, the consulting firm which conducted the study. WMCHC uses similar boundaries to WMH to define its service area and examine needs throughout the area.

Numerous informal collaborative capacities are associated with the assessment through data acquisition, analysis and significant need selection. They represent potential implementation partners and include:

- Local School Districts
- Local Community Organizations
- County Legislatures
- County Departments such as Mental Health and Substance Abuse

A listing of participants in the community participants section of the report provides details on existing partnerships and potential collaborative partners within the area.

A variety of collaborative exchanges took place during the assessment process. The most formal mechanism was the CHNA Advisory Committee which had representation from health care providers, consumers, government, local business and schools throughout the region. The 24 member group met in person four times and shared perspectives on the design of the assessment, local needs and service strengths and weaknesses. The Internet Survey design and significant need selection process was heavily influenced by the committee members. See Exhibit 3 for the list of survey questions. Findings are displayed in the Supportive Data Sets.

### 3. Community Participation

#### 1. Broad based participation

Three mechanisms were used to assure adequate representation of the community within the assessment process. First and perhaps foremost, the assessment was guided by a 26 member advisory committee with individuals from throughout the area. This group reflected the different communities in the area as well as the interests and expertise of schools, health care, community health, behavioral health care, public health, community organizations, businesses and local government. The Assessment Advisory Committee included:

- Jessica Aquilina, Superintendent, Forest City School District
- Tammy Deleo, Public Health Nurse, Wayne and Pike County Health Department
- Jack Dennis, Executive Director, Wayne Memorial Health Foundation
- Maria Diehl, Public Relations, Wayne Memorial Hospital
- Margaret Ennis, Administrator, Wayne County Behavioral Health
- Greg Frigoletto, Superintendent, Wayne Highlands School District
- Matt Osterberg, Commissioner, Pike County
- Keith Gunuskey, Asst. Superintendent, Wallenpaupack Area School District
- Tubin Gupta, MD, Behavioral Health, Wayne Memorial CHCs
- David Hoff, Chief Executive Officer, Wayne Memorial Hospital
- Fred Jackson, Executive Director, Wayne Memorial CHCs
- Wendell Kay, Commissioner, Wayne County
- Carol Kneier, Community Health Manager, Wayne Memorial Hospital
- Dirk Mumford, Board Chair, Wayne Memorial Hospital Board
- Wynter Newman, Manager, WMCHCs
- Lee Oakes, Former Board Chair, Wayne Memorial Hospital
- James Pettinato, Director, Patient Care, Wayne Memorial Hospital
- Patrick Pugliese, MD, Director of ER, Wayne Memorial Hospital
- Hugh Rechner, Board Member, Wayne Memorial Hospital
- Tracy Schwarz, Director, Wayne County Libraries
- Ron Schmalzle, Commissioner, Pike County
- Michelle Valinski, Administrator, Human Services, Wayne County
- Janice Walters, Ex-officio, PA Rural Health Model, PA Department of Health
- Andrea Whyte, Retired, Wayne County Human Services
- Maria Miller, Western Wayne School District

Four meetings took place during the first half of 2019, with findings adopted in June 2019. In addition to overseeing all aspects of the project, the committee was instrumental in:

- Defining the geographic boundaries of the eight communities studied
- Providing numerous adjustments to the internet based survey
- Contacting organizations which agreed to distribute the survey to their members and participate in conversations on health needs in the area
- Reviewing the results of the assessment
- Selecting priorities and
- Authorizing the final report for hospital board consideration

In April, 2019 interviews were conducted with 43 individuals at 11 locations throughout the area. Interviewees were from Pike and Wayne Counties and the Carbondale or Forest City area. People from several sectors of the community were interviewed.

Exhibit 4. Interviewees by Community Sector

Type	Number of Interviewees
Behavioral Health	4
Business	1
Community	7
Consumers	7
Elected Officials	5
Health	13
Schools	6
Total	43

Each interview participant was asked to provide his or her view of current or emerging needs and any new programs initiated or planned for the next year to address those needs. Content analyses of interview results were performed and need topics with the highest number of mentions were considered for significant need selection for the overall service area.

The third mechanism for ensuring adequate community participation was the Community Health Needs Assessment Internet Survey administered during the month of May 2019. The survey was publicized by health and behavioral health organizations, community groups, local government, word-of-mouth and the print media. 40 organizations in the area agreed to distribute an email notice advertising the survey to their constituents. 947 responses were generated. Most people responded via the community or civic organization channel.

An interesting finding is that of the 231 respondents that requested an email copy of the completed study, approximately 75 wanted it for personal health reasons which suggests that individuals were personally interested in data on health care needs in the area.



## 2. Nature and extent of input

Four of the seven sectors of the community involved in the interview process ranked social factors as the most frequent need they saw in the community. The behavioral health and school sectors viewed mental health and substance abuse disorders as the most frequent problems they encountered. Need topic by sector of the community summary findings are presented in Exhibit 5. Values in red are the most frequent unmet needs for respective sectors of the community.

Exhibit 5. Need Topics by Sector

Topic	Sector of Community							Grand Total
	Behavioral Health	Business	Community	Consumers	Elected Officials	Health	Schools	
Behavioral Health	1				1	7	4	13
Chronic Disease			2	1		3		6
Health Services	1	1	4	2	1	6	3	18
Insurance			2	2				4
Mental Health	8		1		3	3	11	26
Pediatrician	1		1		1	2		5
Social Determinants	1	1	14	5	4	7	5	37
Specialists		1		1	1	1		4
Substance Abuse	8	1	2			1	4	16
Grand Total	20	4	26	11	11	30	27	129

## 3. Public Health, Underserved populations, Written Comments on Previous 2016 CHNA and Implementation Strategy

Several individuals on the Advisory Committee have expertise in public health and in addition, data on health status related issues was discussed with, requested and received from the Pennsylvania Department of Health. HMS Associates, the consulting firm preparing the assessment, had extensive experience developing CHNAs for county public health departments in New York in the early 1990s. Additionally, Wayne Memorial participates in the Pennsylvania State Health Improvement Plan (SHIP). The results of the 2019 CHNA are scheduled to be presented at the annual SHIP breakfast in northeastern PA on August 2, 2019.

Underserved individuals were represented in two ways: 1. Through numerous discussions with administrative and clinic staff of the Wayne Memorial Hospital Community Health Centers (a federally qualified health center) and 2. Through discussion with 7 patients at CHC sites. Comments were related to obstacles to care such as pre-authorizations, co-pays, need for enabling services and access to specialists. No written comments were received on either the 2016 CHNA or Implementation Strategy.

## 4. Significant Health Needs and the Prioritization Process

Significant needs were identified for the four county region, Pike and Wayne counties or each of the eight communities in the region. These significant needs were selected to guide implementation strategy development between July 1, 2019 and June 30, 2022. The implementation strategy will be developed and completed early this fall. Additionally, the needs herein may influence the development of transformation plans to be refined by the WMH as a participating hospital in the PA Rural Health Model project.

A total of 40 significant needs are identified, with a different number of needs selected for the region, each county or community. Implementation strategies will be cross-cutting in that some needs are evident in several communities, yet specific actions may vary depending upon a variety of implementation considerations.

- Regional Significant Needs
  - Reflective of comments in the interview and survey process
    - Behavioral health, mental health and substance abuse
      - Interviewees cited increased needs in these areas for children and youth (special programming), seriously persistently mentally ill (housing, ER resources), and opioid abuse
      - Lack of psychiatrists, especially child psychiatrists were noted
      - The availability of counseling types of services within primary care service was noted especially for people with chronic conditions
      - Survey questions documented high need in general as well as specific service needs of children and youth
    - Specialists
      - Numerous comments were made about the need for more specialists
      - Individual survey questions supported this opinion and provide data on need by type of specialist
  - Based on demographic, reproductive health, or cause of death rates or Medicare variables of prevalence, ED use, avoidable inpatient use, annual costs and preventive services use rates
- County Significant Needs
  - Based on demographic, reproductive health, cause of death rates or Medicare variables of prevalence, ED use, avoidable inpatient use, annual costs and preventive services use
- Community Significant Needs
  - Based on demographic, reproductive health, cause of death and avoidable use rates (pending)

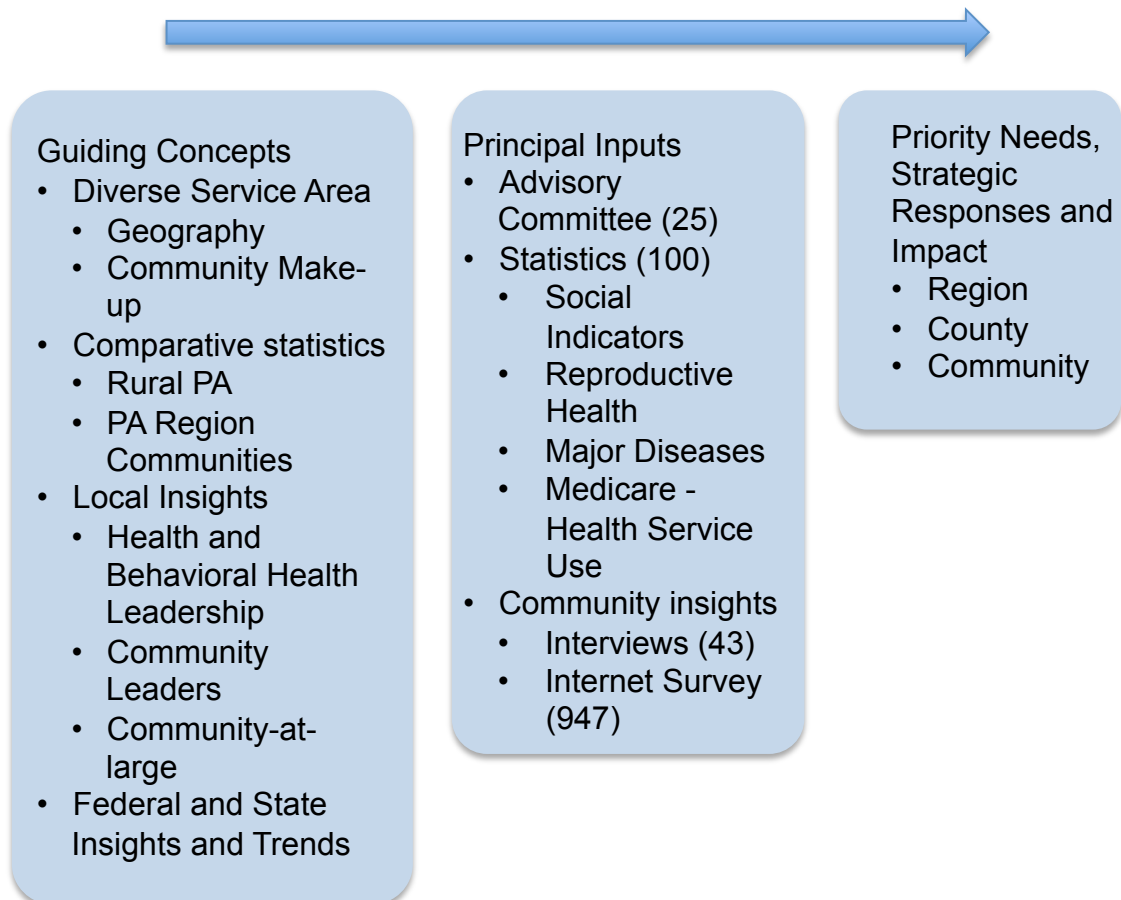
The assessment and implementation strategy development process are inter-dependent. Basically, the most significant needs of the service area are identified through the assessment process. To facilitate the development of implementation strategies, significant need statements provide data on target communities and target populations. Implementation strategy selection includes actions which are considered to be most relevant for the need and most effective in desired outputs and improvements in community health.

The assessment and strategic implementation planning process has three key elements:

- Guiding Concepts to help to assure relevancy
- Principal Inputs to inform the assessment process
- Priority or Significant Need selection to guide impacts in the community

These elements and their sequential relationship is illustrated in Exhibit 6.

Exhibit 6 – Key Elements of the Assessment and Strategy Development Process



## Significant Need Selection Process

- Committee members consider the findings on preliminary priorities which resulted from the collection and analyses of statistical and community insight data.
- Statistical Analyses
  - Preliminary priorities for social indicators, reproductive health, and causes of death have been identified for the Pike and Wayne Counties Region, Pike County, Wayne County and each of the eight communities in the Pike/Wayne Region. Additional priorities have been identified on Medicare cost, chronic condition prevalence, hospital emergency department and inpatient utilization and preventive health care services utilization for the region and each county.
  - A preliminary priority is operationally defined as an indicator which is among the poorest 25% of comparative communities.
  - For the region and county analyses, two comparative analyses or benchmarks were employed
    - A statewide analysis of 31 rural (non-metro) counties in Pennsylvania as defined by the Federal Office of Rural Health Policy which identifies potential priorities from a statewide “rural” perspective
    - A regional analysis of the nine counties within Region 6 of the Pennsylvania Health Care Cost Containment Council which identifies potential priorities from a regional Northeast PA perspective
    - Statistical indicators which have poor findings in either or both comparisons are noted and potential final priorities may emphasize indicators with poor standings in both the statewide rural and NEPA benchmarks
  - For the community level analyses, the benchmarks or basis for identifying a potential priority is poor standing among the eight communities in the Pike/Wayne region.
  - See subsequent exhibits 6 through 8 at the end of this summary for the potential priority listings.
- Community Insights
  - This data is most useful in selecting regional priorities and informing the implementation strategy
  - In the survey component, specific findings on critically needed services, target population, specialist needs and topics of concern also assist in implementation strategy development
  - In the interview component, findings on unmet needs are presented
  - Potential priorities which are supported by both the statistical and community insight data may be most important

- Method
  - The results of the statistical and community insight data was reviewed by the committee in a face-to-face session.
  - The Significant Priority Selection Form with potential regional, county and community priority needs was posted on the internet.
  - Committee members were asked to select two regional significant needs from the community insight listing, and six regional significant needs addressing social indicators, reproductive health, causes of death, and various Medicare indicators. They were also asked to select six significant needs for each county and two for each community.
  - Committee members select priorities based on their view of the number of people affected by a particular indicator or problem, importance to the future of the local health care system or relative importance of a particular service or service system component to the health of the community. There is no set criteria. Individual judgments are sought.
  - 75% of committee members voted in the significant need selection process.

## 5. Potential Resources

The region contains a variety of resources which may have roles in the 2019 Implementation Strategy. There are 62 behavioral health or substance abuse disorder practitioners or organizations, 199 clinic, hospital or health services sites, 531 health related practitioners and pharmacies, 168 religious organizations, 91 schools and libraries, and 75 social programs. Most have relevance to specific communities or counties or health care needs as indicated in the following exhibit. Telephone directory based listings and maps are contained in the Supportive Data Sets.

Exhibit 5 – Regional Resources

Type of Resource	Community								Grand Total
	CA	FC	PE	PS	PW	WC	WN	WS	
<b>Behavioral Health or Substance Disorder Treatment</b>	<b>11</b>		<b>16</b>	<b>1</b>	<b>8</b>	<b>18</b>		<b>8</b>	<b>62</b>
Behavioral Health Services	8		16	1	8	17		7	57
Substance Disorder Treatment	3					1		1	5
<b>Clinic or Hospital or Health Service Site</b>	<b>34</b>	<b>9</b>	<b>47</b>		<b>22</b>	<b>70</b>	<b>2</b>	<b>15</b>	<b>199</b>
Clinics	29	6	32		14	51	2	11	145
Health Service Sites	5	3	15		8	12		4	47
Hospitals						7			7
<b>Health Practitioners</b>	<b>106</b>	<b>19</b>	<b>123</b>	<b>3</b>	<b>53</b>	<b>175</b>	<b>6</b>	<b>46</b>	<b>531</b>
Chiropractors and Podiatrists and Optometrists	10	5	18		10	20	1	13	77
Dentists	11	1	13		11	18	2	5	61
Nurse Practitioners and Physician Assistants	20	1	4		4	32	1	4	66
Other Practitioners	9	6	19	1	10	16		5	66
Pharmacies	9	1	4		4	8		4	30
Physicians and Surgeons	46	5	63	2	13	79	2	14	224
<b>Religious Organizations</b>	<b>32</b>	<b>14</b>	<b>25</b>	<b>3</b>	<b>28</b>	<b>30</b>	<b>12</b>	<b>24</b>	<b>168</b>
Churches	25	14	24	2	21	25	11	21	143
Synagogues					1	1		1	3
<b>Schools and Libraries</b>	<b>13</b>	<b>7</b>	<b>20</b>	<b>4</b>	<b>8</b>	<b>21</b>	<b>5</b>	<b>13</b>	<b>91</b>
Libraries	1	1	3		1	3	3	3	15
Nursery Schools		1	2			2		2	7
Schools	8	5	11	2	5	10	2	8	51
<b>Social Programs</b>	<b>18</b>	<b>5</b>	<b>15</b>		<b>10</b>	<b>19</b>		<b>8</b>	<b>75</b>
Child Care Services	6	2	5		6	5		2	26
listing only not mapping	8		1		3	2		2	16
Other Social Programs	2	3	4		1	10		2	22
Youth Programs	2		5			2		2	11
<b>Grand Total</b>	<b>214</b>	<b>54</b>	<b>246</b>	<b>11</b>	<b>129</b>	<b>333</b>	<b>25</b>	<b>114</b>	<b>1126</b>

Columns may not total due to limitations of geocoding data for mapping purposes.

## 6. 2016 CHNA Impact Highlights

### 1. Chronic Disease

- Various interventional protocols are under evaluation.
- Quality improvement HRSA grant application prepared.
- WMH and WMCHC have partnered with Geisinger School of Medicine and Wright Center GME to submit a grant proposal to HRSA to establish a Rural Residency Program at WMH.
- Numerous support groups meet every two weeks for chronic disease conditions.
- WMH's community health dept. is assessing the need for new programming beyond established ongoing efforts, including need for drug/alcohol abuse, smoking cessation, diabetes control, weight control exercise.

### 2. Demographics

- Support Group for grandparents raising grandchildren
- WMCHC updates sliding fee scale annually per BPHC guidelines.
- WMH and WMCHC regularly refer patients in need of financial assistance and medical coverage to the county assistance offices.
- WMH has implemented a pre-payment program for patients.

### 3. Services --- Mental health services

- A warm handoff protocol was implemented following the 2016 CHNA. WMCHC has revised recruiting plan utilizing professional recruiters, resulting in the addition of a new psychiatrist and 3 new mid-level behavioral health providers since 2016.

- WMH and WMCHC offer very competitive salaries to attract/retrain caregivers. WMH and WMCHC utilize recruitment bonuses for many high need provider positions.
- WMH is evaluating the possibility of implementing a Geriatric Psychiatry program in the hospital in 2020. WMH is evaluating the use of telepsychiatry in the ER and inpatient areas of the hospital.
- WMH's community health department is assessing the need for new programming beyond established ongoing efforts, including need for drug/alcohol abuse, smoking cessation, diabetes control, weight control exercise.

### 4. Services --- Primary care service development

- A recruitment/retention plan for providers is in place and now includes the possibility of establishing a family practice residency program via a HRSA planning grant applied for this year.
- The WMH/WMCHC relationship is very strong and ongoing. A change in that relationship is never discussed.
- WMCHC opened a new family Health Center in Forest City this spring to replace a smaller outdated center closing in Vandling, Susquehanna County. WMCHC is in the process of expanding services at the Hamlin FHC and has applied for federal funding to increase dental services in Pike Dental Clinic.

4. Services --- Primary care service development (Continued)

- WMH and WMCHC has partnered with Geisinger School of Medicine and Wright Center Graduate Medical Education and submitted a grant proposal to the Federal Health Resources and services Administration to establish a Rural Residency Program at WMH.

5. Services --- Specialty care

- Discussions are ongoing about collaborating with tertiary care hospitals in various programs: residency, psychiatry, cardiology, e.g.
- WMH and WMCHC are evaluating the potential for recruiting a number of specialists including, dermatology, gerontology, urology and surgeons.

6. Services --- Substance abuse disorder services

- Recruitment of psychiatrist with opioid specialization is underway. Warm Handoff was implemented following 2016 CHNA.
- WMCHC provides regular Medication Assisted Treatment (MAT) for substance use disorder.

7. Services --- Tick borne illnesses

- A new WMCHC tick-borne disease clinic was opened in Pike County
- New lab testing has been added.



## 7. Supportive Data Sets

- a. Internet Survey
- b. Survey and Interview Content Summary
- c. Resources – Maps and Listings
- d. Statistical Analyses

## a. Internet Based Community Survey - Results

<b>1. What is your age?</b>		
Answer Choices	Responses	
	Percent	Number
Under 18	0%	2
18 to 44	29%	269
45 to 54	25%	236
55 to 64	24%	224
65 to 74	16%	153
75+	6%	56
	<b>Answered</b>	<b>940</b>
	<b>Skipped</b>	<b>7</b>

<b>2. Sex at birth?</b>		
Answer Choices	Responses	
	Percent	Number
Male	20%	186
Female	80%	751
	<b>Answered</b>	<b>937</b>
	<b>Skipped</b>	<b>10</b>

<b>3. What is your sexual orientation?</b>		
Answer Choices	Responses	
	Percent	Number
Choose not to answer	4%	39
Straight or heterosexual	92%	860
Lesbian/Gay	1%	11
Bisexual	2%	14
Something Else	1%	5
Don't know	0%	0
None of the above, please specify	0%	4
	<b>Answered</b>	<b>933</b>
	<b>Skipped</b>	<b>14</b>

**4. Are you currently employed in or retired from the health care, prevention, behavioral health, dental care or human services areas? If so, please check those that apply:**

Answer Choices	Responses	
	Percent	Number
Behavioral health	5%	44
Dental care	2%	20
Health care	34%	320
Human services	8%	76
Prevention services	2%	17
None of the above	54%	500
	<b>Answered</b>	<b>930</b>
	<b>Skipped</b>	<b>17</b>

**5. If you checked none of the above in the last question, please indicate your current type of employment or type of employment before you retired.**

Answer Choices	Responses	
	Percent	Number
Farming or Dairy Industry	2%	9
Construction, Building Trades, Mining, Timber or Quarry	3%	13
Education	50%	261
Retail, Transportation, Banking or Tourism	9%	49
Law or Law Enforcement	4%	22
Other (please specify):	35%	181
	<b>Answered</b>	<b>520</b>
	<b>Skipped</b>	<b>427</b>

**6. Are you full time or part time resident of Lackawanna, Pike, Susquehanna or Wayne Counties? If so, please so indicate which AND the length of time during which you were either full or part time resident.**

Answer Choices	Responses	
	Percent	Number
Not a resident	1%	13
Full Time Resident	93%	869
Part Time Resident	4%	36
Resident for less than two years	2%	17
Resident for 2 to 5 years	4%	40
Resident for more than 5 years	44%	414
	<b>Answered</b>	<b>938</b>
	<b>Skipped</b>	<b>9</b>

**6. Are you full time or part time resident of Lackawanna, Pike, Susquehanna or Wayne Counties? If so, please so indicate which AND the length of time during which you were either full or part time resident.**

Answer Choices	Responses	
	Percent	Number
Not a resident	1%	13
Full Time Resident	93%	869
Part Time Resident	4%	36
Resident for less than two years	2%	17
Resident for 2 to 5 years	4%	40
Resident for more than 5 years	44%	414
	<b>Answered</b>	<b>938</b>
	<b>Skipped</b>	<b>9</b>

**7. In what area of the region do you reside?.**

Answer Choices	Responses	
	Percent	Number
Not a resident of these areas	6%	57
Carbondale Area	5%	47
Eastern Pike	4%	41
Southern Pike	1%	13
Western Pike	13%	120
Central Wayne	36%	337
Northern Wayne	16%	153
Southern Wayne	14%	133
Forest City Area	4%	39
	<b>Answered</b>	<b>940</b>
	<b>Skipped</b>	<b>7</b>

**8. How did you learn about this survey?**

Answer Choices	Responses	
	Percent	Number
Health or behavioral care provider	18%	171
Community or civic organization	13%	124
School	22%	209
Friend or associate	5%	49
Library	9%	87
Media	5%	49
Local government	3%	25
Other (please specify)	24%	222
	<b>Answered</b>	<b>936</b>
	<b>Skipped</b>	<b>11</b>

<b>9. Are you completing this survey</b>		
Answer Choices	Responses	
	Percent	Number
Online	99%	926
Paper version	1%	5
	<b>Answered</b>	<b>931</b>
	<b>Skipped</b>	<b>16</b>

<b>10. Do you have a family doctor/primary care practitioner?</b>		
Answer Choices	Responses	
	Percent	Number
Yes	95%	895
No	5%	43
	<b>Answered</b>	<b>938</b>
	<b>Skipped</b>	<b>9</b>

<b>11. If yes, was your last medical appointment</b>		
Answer Choices	Responses	
	Percent	Number
within the last year	85%	775
between one and two years ago	9%	80
between two and three years ago	4%	33
more than three years ago	3%	26
	<b>Answered</b>	<b>914</b>
	<b>Skipped</b>	<b>33</b>

<b>12. The last time you needed to schedule an appointment with your primary care provider, was it scheduled to occur within:</b>		
Answer Choices	Responses	
	Percent	Number
one week	46%	425
within to two to three weeks	26%	237
within three to four weeks	7%	64
more than a month	17%	156
unsure	5%	46
	<b>Answered</b>	<b>928</b>
	<b>Skipped</b>	<b>19</b>

**13. Please rate the following services based on your view of the need for additional capacity (outpatient, unless otherwise indicated), i.e., more doctors, nurses, health, mental health, or dental health related practitioners or clinics. Critical unmet need refers to an immediate compelling need -- must be met as soon as possible. Unmet need is less severe -- should be met within the next two to three years.**

	Critical unmet need		Unmet need	
	Percent	Number	Percent	Number
Mental health services - inpatient	42%	378	20%	184
Mental health services - crisis services	41%	371	23%	208
Mental health services - outpatient	41%	370	24%	214
Substance abuse services - inpatient services	37%	332	22%	201
Substance abuse services - crisis services	36%	323	24%	219
Substance abuse services - outpatient services	35%	315	24%	217
Services for tick borne illnesses including Lyme Disease	30%	275	31%	279
Urology	23%	210	25%	219
Specialists for cancer	23%	208	35%	321
Neurology	21%	193	30%	275
Specialists for heart disease	18%	162	30%	268
Primary Care for the Elderly - Gerontology	17%	153	30%	268
Specialists for diabetes	16%	140	28%	255
Specialty Care via telemedicine linkage to larger hospitals	15%	136	26%	236
Complementary (Alternative) medicine	13%	122	32%	291
Emergency medical services: emergency room	13%	115	23%	210
Emergency medical services: ambulance	13%	114	20%	185
Primary care services (family medicine)	12%	110	30%	276
Ear/Nose/Throat	12%	106	38%	339
Specialists for breathing problems	11%	101	30%	267
Pediatrics	9%	85	19%	171
Inpatient private rooms	9%	78	25%	222
Dialysis services: inpatient	8%	72	14%	124
Gynecological care	7%	66	24%	218
Personal health screenings	6%	57	21%	194
Obstetrical care	6%	51	14%	129
Well child services (immunizations, prevention, etc.)	5%	49	15%	132
Hearing - audiology	5%	49	18%	165
Dialysis services: outpatient	5%	48	13%	120
Dental Health - extractions, restorations or fillings	5%	48	18%	168
Family planning	5%	47	17%	150
Prenatal and perinatal services	5%	43	14%	125
Dental Health - preventive	4%	39	14%	130
Diagnostic radiology	4%	38	12%	105
Diagnostic lab	4%	37	11%	105
Immunizations	4%	34	9%	86
Physical rehabilitation	3%	24	9%	84
Pharmacy	2%	21	6%	53
Other	19%	80	6%	26

**14. Please rate the following supportive services based on your view of the need for additional capacity.**

	Critical unmet need		Unmet need	
	Percent	Number	Percent	Number
Behavioral health related counseling/assessment	34%	308	29%	260
Behavioral health case management	27%	243	29%	264
Transportation	23%	208	35%	314
Medical/health counseling/assessment	22%	197	33%	294
Outreach to increase public awareness of programs	18%	165	45%	402
Help understanding recommended medical care	14%	129	40%	360
In-home assessment of the need for health related home improvements	14%	125	30%	268
Help in making a residence compatible with mobility, hearing or visual needs	13%	114	29%	261
Health or medical case management	12%	111	36%	324
Translation	11%	98	22%	197
Health education	11%	97	32%	283
Support groups	10%	93	29%	258
Facilitated enrollment services for Medicaid	9%	83	24%	214
Follow-up/Discharge planning	9%	82	26%	232
Referral	6%	55	21%	184
Other	4%	14	3%	10

**15. Please indicate which population groups are in need of additional primary care services.**

	Critical unmet need		Unmet need	
	Percent	Number	Percent	Number
People with no insurance	26%	233	33%	293
Seniors	25%	226	38%	338
Improved access for youth raised by their grandparents	24%	215	34%	301
People with low incomes	24%	213	34%	299
People with inadequate health insurance	23%	209	35%	314
Teens	18%	155	34%	300
Teenage parents	17%	154	31%	272
Pre-teens	15%	132	31%	270
Adults	15%	128	33%	287
People eligible for Medicaid	13%	117	29%	259
Women of childbearing age	9%	82	24%	212
Other	5%	16	3%	9

<b>16. Please rate the importance of the following aspects of health care services:</b>				
	Highly Important		Important	
	Percent	Number	Percent	Number
Urgent Care – walk-ins, especially weekends or evenings	70%	643	28%	257
Credentials of staff	67%	611	30%	276
Linkages with out of area specialists	52%	475	41%	369
Scheduled appointments on weekends or evenings	52%	477	41%	373
Range of health care services at clinic	51%	467	45%	413
Proximity to home	44%	397	49%	447
Follow-up visits on services such as nutrition/diet, prescription/medication counseling, disease management counseling	40%	365	48%	441
Proximity to employer	24%	216	44%	400
Multilingual practitioners (English plus) – Spanish	14%	125	36%	328
Multilingual practitioners (English plus) – other (specify below)	8%	69	18%	150
Multilingual practitioners (English plus) – Russian	7%	60	21%	188
Multilingual practitioners (English plus) – German	6%	51	19%	172
Other	5%	16	2%	8



<b>17. Have you or your family recently gone to a hospital ER in these cities for care? If so, please indicate where and approximately how often.</b>				
	Several times per year		Once per year	
	Percent	Number	Percent	Number
Scranton, PA	27%	146	33%	181
Honesdale, PA	26%	180	34%	234
Wilkes-Barre, PA	8%	26	10%	32
Philadelphia, PA	8%	25	7%	22
New York, NY	6%	19	2%	7
Danville, PA	5%	14	11%	34
Middletown, NY	4%	11	3%	9
East Stroudsburg, PA	3%	9	5%	13
Allentown, PA	3%	8	4%	12
Port Jervis, NY	2%	7	4%	12
Newton, NJ	2%	5	4%	10
Binghamton, NY	1%	4	3%	7
Susquehanna, PA	1%	3	0%	0
Morristown, NJ	1%	3	1%	3
Hershey, PA	1%	3	5%	13
Harris, NY	1%	2	0%	0
Sussex, NJ	1%	2	0%	1
Hackensack, NJ	1%	2	1%	4
Callicoon, NY	1%	2	3%	8
Sayre, PA	0%	1	2%	5
Montrose, PA	0%	0	0%	0
Tunkhannock, PA	0%	0	0%	1
Walton, NY	0%	0	0%	0
Ellenville, NY	0%	0	0%	0

<b>18. What types of specialty health care services are most needed in the area?</b>				
	Critical unmet need		Unmet need	
	Percent	Number	Percent	Number
Mental Health Services	49%	429	25%	216
Psychiatrists	47%	412	24%	207
Substance Abuse Services	44%	386	24%	207
Tick borne illnesses	40%	349	30%	267
Skin problems - Dermatologists	35%	305	36%	311
Cancer - Oncologists	32%	279	35%	312
Urologists	31%	265	30%	258
Neurologists - Nerve diseases	30%	257	34%	298
Primary Care for the Elderly - Geriatricians	27%	234	32%	280
Diabetes - Endocrinologists	27%	231	31%	271
Nephrologists - Kidney diseases	25%	217	30%	257
Rheumatologists	23%	199	34%	287
Heart Disease - Cardiologists	23%	199	33%	285
Pain Management	22%	190	33%	289
Bone or Skeletal Injuries - Orthopedic Surgeons	17%	145	35%	299
Ophthalmologists - Eye Diseases	11%	92	24%	202
Other	9%	26	3%	10

<b>19. Have you or your family gone outside of the area for specialty care?</b>		
Answer Choices	Responses	
	Percent	Number
Yes	82%	739
No	18%	160
	<b>Answered</b>	<b>899</b>
	<b>Skipped</b>	<b>48</b>

**20. Please indicate where specialty care was received outside the area and how often where applicable.**

	Several times per year		Once per year		Rarely	
	Percent	Number	Percent	Number	Percent	Number
Scranton, PA	62%	352	21%	118	17%	96
Honesdale, PA	32%	77	20%	47	48%	113
Wilkes-Barre, PA	32%	90	17%	49	51%	145
Philadelphia, PA	30%	94	17%	55	53%	169
Danville, PA	23%	71	20%	62	58%	180
New York, NY	16%	39	11%	27	73%	177
Allentown, PA	15%	37	12%	29	74%	184
Hershey, PA	10%	23	11%	24	79%	180
Middletown, NY	10%	21	9%	20	81%	173
Morristown, NJ	9%	18	2%	5	89%	178
Binghamton, NY	7%	13	4%	7	90%	176
Port Jervis, NY	7%	13	3%	5	91%	179
East Stroudsburg, PA	5%	11	6%	12	89%	178
Newton, NJ	4%	7	5%	9	92%	178
Sayre, PA	3%	6	1%	2	96%	182
Tunkhannock, PA	3%	5	1%	2	96%	180
Hackensack, NJ	2%	4	3%	6	95%	181
Susquehanna, PA	2%	3	0%	0	98%	181
Harris, NY	1%	1	1%	2	98%	180
Sussex, NJ	1%	1	1%	2	98%	182
Callicoon, NY	1%	1	2%	3	98%	183
Montrose, PA	0%	0	0%	0	100%	181
Walton, NY	0%	0	0%	0	100%	182
Ellenville, NY	0%	0	0%	0	100%	182

**21. Which type(s) of specialty care did you receive outside the area and were they delivered to you as an inpatient or outpatient?**

	Inpatient Care		Outpatient Care		Total
	Percent	Number	Percent	Number	Number
Substance Abuse Services	62%	16	62%	16	26
Cancer - Oncologists	45%	67	79%	118	150
Heart Disease - Cardiologists	43%	93	74%	159	215
Nephrologists - Kidney diseases	37%	21	74%	42	57
Other	35%	50	77%	110	143
Bone or Skeletal Injuries - Orthopedic Surgeons	32%	87	81%	222	273
Mental Health Services	30%	26	84%	74	88
Psychiatrists	29%	22	81%	62	77
Urologists	24%	37	85%	130	153
Primary Care for the Elderly - Geriatricians	24%	8	88%	30	34
Neurologists - Nerve diseases	23%	34	84%	125	148
Pain Management	15%	13	87%	74	85
Rheumatologists	15%	15	87%	86	99
Skin problems - Dermatologists	12%	36	89%	277	310
Ophthalmologists - Eye diseases	12%	17	90%	133	147
Tick borne illnesses	11%	9	90%	72	80
Diabetes - Endocrinologists	9%	8	91%	85	93

**22. We are concerned about the needs of children and youth in the area. Please rate the following topics.**

	Highly Important		Important	
	Percent	Number	Percent	Number
Substance abuse	79%	707	17%	153
Suicide	75%	679	21%	185
Texting while driving	74%	659	22%	194
Depression or anxiety	71%	640	24%	219
Vaping	67%	603	25%	226
Alcohol abuse	62%	561	32%	287
Tobacco	60%	534	33%	298
Bullying	58%	517	33%	296
Sexually transmitted diseases, including HIV infection	56%	500	36%	323
Reckless behavior causing accidents and injuries	55%	494	37%	330
Overweight	53%	473	41%	365
Unintended pregnancy	53%	464	40%	350
Unhealthy diet	50%	449	43%	381
Internet safety	50%	445	41%	366
Lack of exercise (couch potatoes)	50%	442	43%	386
After school programs	48%	421	40%	352
Teen sexuality	46%	405	42%	374
Sensitivity to differences of other children	45%	394	43%	379
Sexual identity	34%	301	39%	346
Speech or Hearing	32%	277	50%	439
Other	13%	29	5%	11

**23. Which groups have unmet need in the area for children and youth behavioral health services?**

	Critical unmet need		Unmet need	
	Percent	Number	Percent	Number
Youth who have been abused physically or sexually	40%	348	27%	234
Parents or grandparents of troubled youth	40%	346	30%	266
Adolescents	37%	319	30%	263
Autistic children and youth	33%	287	27%	237
Youth with eating disorders	29%	256	33%	288
Young children	29%	255	30%	260

**24. Which services are most needed for children and youth?**

	Critical unmet need		Unmet need	
	Percent	Number	Percent	Number
Opioid treatment services	46%	399	26%	225
Crisis services	43%	370	26%	230
Child psychiatry	42%	368	27%	234
Psychiatric medication maintenance	41%	354	26%	229
Psychiatric inpatient care	40%	349	26%	227
Structured day treatment programs	28%	239	32%	277
Coordination of care with schools	26%	224	33%	288
Court order residential placement	23%	197	28%	237
Emergency room services	22%	191	25%	213

**25. Quality of care has been shown to improve in hospitals which are designed to be more pleasant, comfortable and supportive of patients and their families. Please rate the following hospital physical characteristics, 1 through 6, with six being the most harmful, to quality or effectiveness of your care during a hospital stay.**

	4		5		6	
	Percent	Number	Percent	Number	Percent	Number
Cleanliness, meals, room decor	10%	63	16%	100	29%	182
Privacy when discussing your care	15%	103	16%	105	22%	146
Lack of noise pollution from paging systems, alarms or telephones	22%	155	21%	150	14%	104
Temperature of patient room	16%	132	18%	147	13%	109
Private rooms	14%	89	16%	107	13%	86
Availability of sunlight or bright lighting	23%	155	9%	63	9%	61

**26. Over the past five years, do you feel the the quality of services locally has improved, remained the same or declined?**

	Improved		Remained the same		Declined	
	Percent	Number	Percent	Number	Percent	Number
Emergency Room Services	35%	313	35%	310	18.18%	162
Inpatient Hospital Care	27%	240	38%	336	10.97%	96
Specialty Services	19%	168	37%	321	21.37%	187
Collaboration with other hospitals to provide specialty care	18%	161	30%	261	15.81%	138
Primary Care Providers	17%	147	43%	378	26.31%	231
Hospice Care	17%	145	30%	260	5.85%	51
Home Care	15%	135	30%	264	10.30%	90
Substance Abuse Services	11%	100	28%	244	22.07%	192
Mental Health Services	10%	87	26%	225	31.58%	277
Nursing Home Care	7%	57	34%	295	17.53%	153
Women's Health	15%	129	43%	378	12.97%	113

**27. Please rate the importance of the following organizations or groups in promoting healthy lifestyles.**

	Highly Important		Important	
	Percent	Number	Percent	Number
Families	88%	797	11%	98
Primary care providers	71%	639	27%	244
Schools	68%	615	30%	268
Social Media	36%	322	42%	374
Faith based organizations	33%	299	47%	425
Local media	29%	263	50%	447
County government	28%	253	49%	437
Local Government (town councils, etc.)	26%	227	47%	421
Civic groups or clubs	25%	227	56%	498
Local businesses	22%	191	46%	412
Other	10%	24	5%	13

## PRAPARE QUESTIONS FOLLOW

These questions come from the national PRAPARE social determinants of health assessment protocol, developed and owned by the National Association of Community Health Centers (NACHC), in partnership with the Association of Asian Pacific Community Health Organization (AAPCHO), the Oregon Primary Care Association (OPCA), and the Institute for Alternative Futures (IAF). For more information, visit [www.nachc.org/prapare](http://www.nachc.org/prapare).”

<b>28. Are you Hispanic or Latino?</b>		
Answer Choices	Responses	
	Percent	Number
Yes	1%	12
No	94%	843
I choose not to answer this question	4%	40
	<b>Answered</b>	<b>895</b>
	<b>Skipped</b>	<b>52</b>

<b>29. Which race(s) are you? Check all that apply.</b>		
Answer Choices	Responses	
	Percent	Number
Asian	0%	4
Native Hawaiian	0%	0
Pacific Islander	0%	1
Black/African American	0%	1
White	93%	832
American Indian/Alaskan Native	0%	4
I choose not to answer this question	6%	53
Other (please specify)	0%	3
	<b>Answered</b>	<b>891</b>
	<b>Skipped</b>	<b>56</b>

<b>30. At any point in the past 2 years, has seasonal or migrant farm work been your or your family's main source of income?</b>		
Answer Choices	Responses	
	Percent	Number
Yes	0%	4
No	97%	860
I choose not to answer this question	2%	22
	<b>Answered</b>	<b>886</b>
	<b>Skipped</b>	<b>61</b>

<b>31. Have you been discharged from the armed forces of the United States?</b>		
Answer Choices	Responses	
	Percent	Number
Yes	6%	53
No	93%	828
I choose not to answer this question	1%	13
	<b>Answered</b>	<b>894</b>
	<b>Skipped</b>	<b>53</b>

<b>32. What language are you most comfortable speaking?</b>		
Answer Choices	Responses	
	Percent	Number
English	99%	877
I choose not to answer this question	1%	11
Language other than English (please write)	0%	0
	<b>Answered</b>	<b>888</b>
	<b>Skipped</b>	<b>59</b>

<b>33. How many family members, including yourself, do you currently live with?</b>		
Answer Choices	Responses	
	Percent	Number
1	19%	165
2	34%	296
3	16%	141
4	21%	185
5	7%	59
6	2%	15
7	1%	7
8	0%	2
9	0%	0
10+	0%	0
I choose not to answer this question	1%	9
	<b>Answered</b>	<b>879</b>
	<b>Skipped</b>	<b>68</b>



<b>34. What is your housing situation today?</b>		
Answer Choices	Responses	
	Percent	Number
I have housing	96%	844
I do not have housing (staying with others, in a hotel, in a shelter, living outside on the street, on a beach, in a car, or in a park)	2%	19
I choose not to answer this question	2%	18
	<b>Answered</b>	<b>881</b>
	<b>Skipped</b>	<b>66</b>

<b>35. Are you worried about losing your housing?</b>		
Answer Choices	Responses	
	Percent	Number
Yes	4%	38
No	93%	828
I choose not to answer this question	2%	21
	<b>Answered</b>	<b>887</b>
	<b>Skipped</b>	<b>60</b>

<b>36. What is the highest level of school that you have finished?</b>		
Answer Choices	Responses	
	Percent	Number
Less than high school degree	0%	1
High school diploma or GED	11%	98
More than high school	88%	782
I choose not to answer this question	1%	11
	<b>Answered</b>	<b>892</b>
	<b>Skipped</b>	<b>55</b>

<b>37. What is your current work situation?</b>		
Answer Choices	Responses	
	Percent	Number
Unemployed	2%	22
Part-time or temporary work	9%	79
Full-time work	70%	625
I choose not to answer this question	2%	19
Otherwise unemployed but not seeking work (ex: student, retired, disabled, unpaid primary care giver) Please write:	16%	147
	<b>Answered</b>	<b>892</b>
	<b>Skipped</b>	<b>55</b>

<b>38. What is your main insurance?</b>		
Answer Choices	Responses	
	Percent	Number
None/uninsured	2%	16
Medicaid	2%	21
CHIP Medicaid	0%	0
Medicare	18%	156
Other public insurance (CHIP)	2%	15
Other public insurance (not CHIP)	4%	35
Private insurance	73%	647
	<b>Answered</b>	<b>890</b>
	<b>Skipped</b>	<b>57</b>

<b>39. During the past year, what was the total combined income for you and the family members you live with?</b>		
Answer Choices	Responses	
	Percent	Number
Choose not to disclose	21%	158
\$0-\$10,999	2%	13
\$11,000-\$20,999	2%	17
\$21,000-\$30,999	3%	26
\$31,000-\$40,999	7%	57
\$41,000-\$50,999	8%	58
\$51,000-\$60,999	6%	46
\$61,000-\$70,999	5%	40
\$71,000-\$80,999	7%	56
\$81,000-\$90,999	7%	53
\$91,000-\$100,999	7%	56
\$101,000 and above	25%	190
	<b>Answered</b>	<b>770</b>
	<b>Skipped</b>	<b>177</b>

**40. In the past year, have you or any family members you live with been unable to get any of the following when it was really needed? Check all that apply.**

Answer Choices	Responses	
	Percent	Number
No - we have been able to get things when really needed	90%	759
Food	2%	18
Clothing	2%	16
Utilities	3%	23
Child Care	1%	12
Medicine or Any Health Care (Medical, Dental, Mental Health, Vision)	7%	57
Phone	1%	9
Other (please write):	3%	22
	<b>Answered</b>	<b>846</b>
	<b>Skipped</b>	<b>101</b>

**41. Has lack of transportation kept you from medical appointments, meetings, work, or from getting things needed for daily living? Check all that apply.**

Answer Choices	Responses	
	Percent	Number
Yes, it has kept me from medical appointments or from getting my medications	1%	13
Yes, it has kept me from non-medical meetings, appointments work, or from getting things that I need	3%	24
No	95%	843
I choose not to answer this question	1%	8
	<b>Answered</b>	<b>883</b>
	<b>Skipped</b>	<b>64</b>

**42. How often do you see or talk to people that you care about and feel close to? (For example: talking to friends on the phone, visiting friends or family, going to church or club meetings)**

Answer Choices	Responses	
	Percent	Number
Less than once a week	6%	54
1 or 2 times a week	13%	118
3 to 5 times a week	19%	164
5 or more times a week	59%	526
I choose not to answer this question	3%	24
	<b>Answered</b>	<b>886</b>
	<b>Skipped</b>	<b>61</b>

**43. Stress is when someone feels tense, nervous, anxious, or can't sleep at night because their mind is troubled. How stressed are you?**

Answer Choices	Responses	
	Percent	Number
Not at all	13%	115
A little bit	28%	252
Somewhat	29%	254
Quite a bit	16%	145
Very much	11%	96
I choose not to answer this question	3%	25
	<b>Answered</b>	<b>887</b>
	<b>Skipped</b>	<b>60</b>

**44. In the past year, have you spent more than 2 nights in a row in a jail, prison, detention center, or juvenile correctional facility?**

Answer Choices	Responses	
	Percent	Number
Yes	0%	0
No	99%	878
I choose not to answer this question	1%	10
	<b>Answered</b>	<b>888</b>
	<b>Skipped</b>	<b>59</b>

<b>45. Are you a refugee?</b>		
Answer Choices	Responses	
	Percent	Number
Yes	0%	2
No	99%	876
I choose not to answer this question	1%	8
	<b>Answered</b>	<b>886</b>
	<b>Skipped</b>	<b>61</b>

<b>46. Do you feel physically and emotionally safe where you currently live?</b>		
Answer Choices	Responses	
	Percent	Number
Yes	95%	843
No	2%	22
I choose not to answer this question	2%	20
	<b>Answered</b>	<b>885</b>
	<b>Skipped</b>	<b>62</b>

<b>47. In the past year, have you been afraid of your partner or ex-partner?</b>		
Answer Choices	Responses	
	Percent	Number
Yes	2%	17
No	90%	806
I have not had a partner in the past year	6%	54
I choose not to answer this question	2%	14
	<b>Answered</b>	<b>891</b>
	<b>Skipped</b>	<b>56</b>

**48. Please take a moment to share any general comments you have about health care or supportive services needs in the area or prior community health needs assessments.**

**304 responses**

**49. If you would like to receive a copy of the overall Needs Assessment report in July 2019, please indicate your basis for interest and provide your email address below. Basis for Interest:**

Answer Choices	Responses	
	Percent	Number
	<b>Skipped</b>	<b>737</b>
	<b>Answered</b>	<b>210</b>
Personal health care	37%	77
Health care organization	25%	53
School	20%	42
Business	14%	29
Human service organization	11%	23
Mental health or substance abuse organization	10%	22
Civic group or club	8%	16
Local government	8%	16
Faith based organization	5%	11
Email:		237

## b. Survey and Internet Content Regional Summary

- Stark differences in Needs Comments
  - 43 interviewees: 181 comments, 129 comments on needs
    - General discussions lasting from 10 minutes to 60 minutes which explored the basis of perception of need and potential approaches as well as related descriptive information
    - Interviews heavily favored behavioral health (including mental health and substance abuse) and social factors as key problems
  - 947 surveys: 304 comments on needs
    - A combination of specific statements and generalities
    - Survey comments, although referencing behavioral health needs, emphasized the need for specialists and on consumerism; social factors were less prevalent
    - Survey questions on service and specialty needs and quality provide additional perspectives on those respective issues
- Behavioral health, mental health and substance abuse
  - Interviewees cited increased needs in these areas for children and youth (special programming), seriously persistent mental illness (housing, ER resources), and opioid abuse
  - Lack of psychiatrists, especially child psychiatrists was noted
  - The availability of counseling types of services within primary care settings was noted especially for people with chronic conditions
  - Survey questions documented high need in general as well as specific service needs of children and youth
  - Data in the Pennsylvania Youth Study (PAYS) documents alcohol, tobacco and other drugs (ATOD) trends and needs in the area for Pike and Wayne County Youth
- Specialists and Consumerism
  - Numerous comments were made about the need for more specialists
  - Individual survey questions supported this opinion
  - General comments about “consumerism” were varied
  - No overriding consensus on individual areas in need of improvement
  - Areas covered included health care policy, philosophy of care, and personal experiences

- Social Determinants
  - Interviewees often cited social factors as key influences on health and behavioral health services needs
  - In general, the need for supportive services were increasing due to increases in homelessness, levels of domestic violence and abuse, unwed mothers, and young parents; and the lack of affordable housing, transportation, marketable training or skills, and recreational activities
  - Yet, the high level of perceived need also seemed to be related to respondents' greater attention to social determinants as key influences of health and mental health well-being
  - Higher costs and use of services by people with low incomes covered by Medicare also reinforces the need for supportive services
  - Social determinant related program expansion may have special relevance to the PA Rural Health Model initiative



### c. Resources – Maps and Listings

Map 1 – Behavioral Health and Substance Disorder Services  
Listing

Map 2 – Clinics, Health Services Sites and Hospitals  
Listing

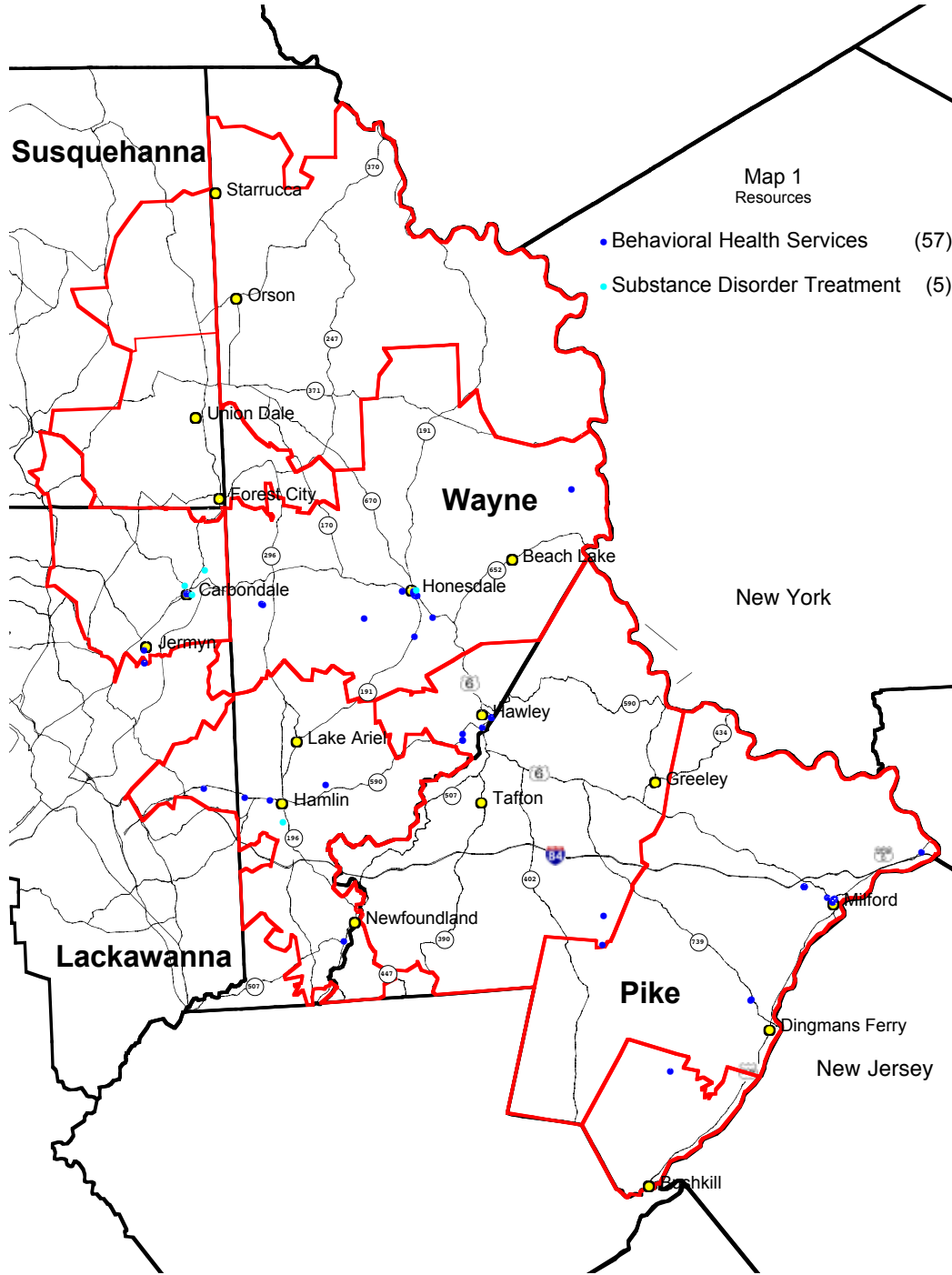
Map 3 – Health Care Practitioners  
Listing

Map 4 – Religious Resources  
Listing

Map 5 – Educational Resources  
Listing

Map 6 – Community Resources  
Listing

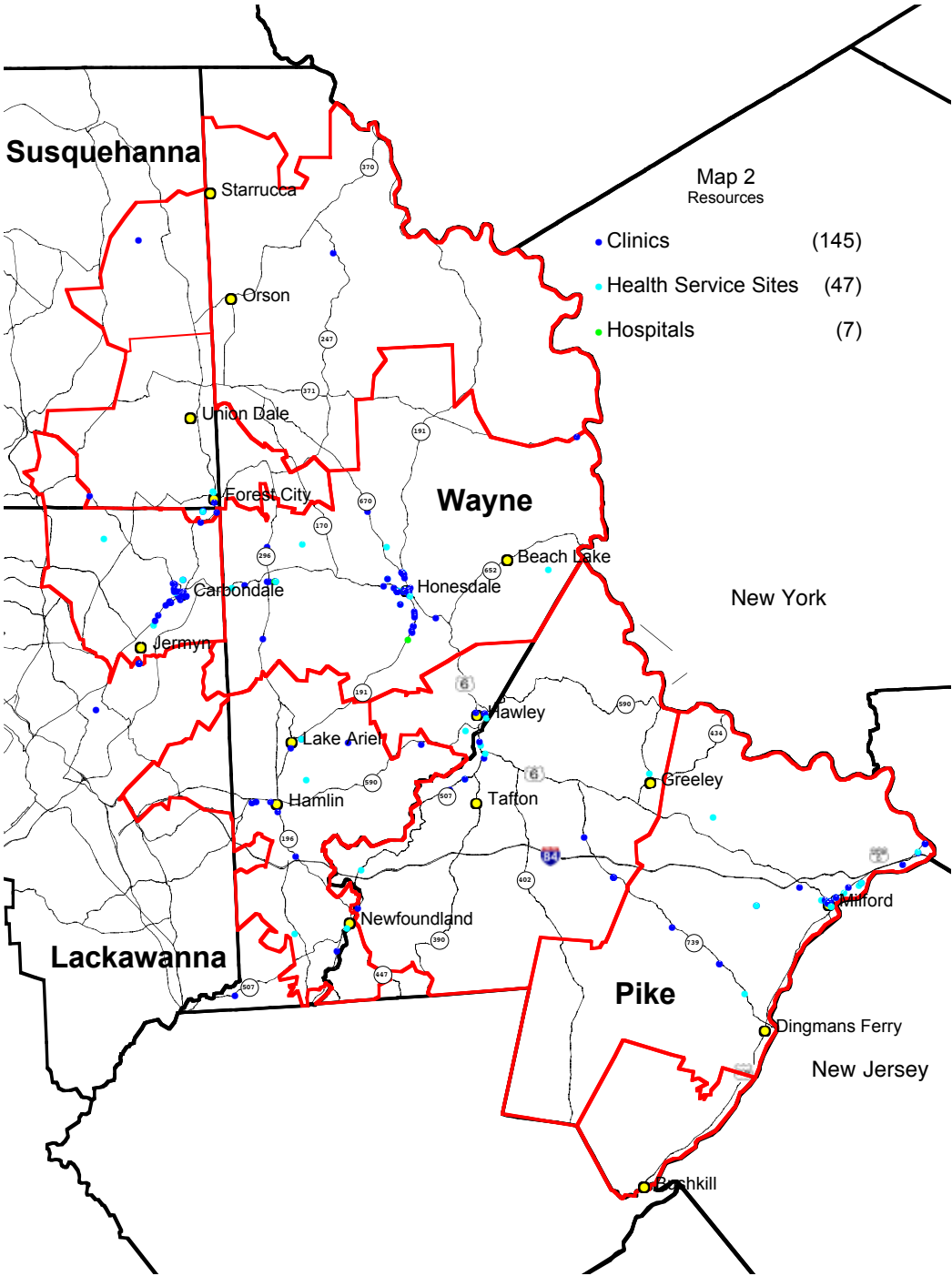
Map 1 – Behavioral Health and Substance Disorder Services



NAME	ADDRESS	CITY	Primary SIC Description	PWA Comm.
Lawrence J Laurynas Counseling	22 Fallbrook Rd	Carbondale	Drug Abuse & Addiction Info & Treatment	CA
Lincoln Ave Medical	100 Lincoln Ave	Carbondale	Drug Abuse & Addiction Info & Treatment	CA
Maclusky, Evan James	30-32 N Main St	Carbondale	Counselors	CA
Mcgrath, Suzanne	5 S Washington Ave	Jermyn	Social Workers	CA
Nhs Human Svc	30-32 N Main St	Carbondale	Social Workers	CA
Pettinato, Sarah	5 S Washington Ave	Jermyn	Counselors	CA
Retreat At White Birch LLC	25 Reservoir St	Simpson	Drug Abuse & Addiction Info & Treatment	CA
Sholcosky, Danielle D	30-32 N Main St	Carbondale	Social Workers	CA
Stearns, Jodi	30-32 N Main St	Carbondale	Counselors	CA
Valley Counseling-Ne Pa PC	401 Washington Ave	Jermyn	Counseling Services	CA
Van Tassel, Rachael A	30-32 N Main St	Carbondale	Counselors	CA
Center Counseling	1875 Route 739	Dingmans Ferry	Counseling Services	PE
Danzo, Alyssa	10 Buist Rd	Milford	Counselors	PE
Dr Bob Deyoung	104 W High St	Milford	Counseling Services	PE
Feese, Jillian	10 Buist Rd	Milford	Counselors	PE
John G KUNA Psyd & Assoc	1011 Pennsylvania Ave	Matamoras	Psychologists	PE
Kawan-Hemler, Cristina	10 Buist Rd	Milford	Counselors	PE
Meshko, Brieana	10 Buist Rd	Milford	Counselors	PE
Pike Autism Support Svc-Ne Pa	201 Broad St	Milford	Autism Counseling & Treatment	PE
Pike County Yap	10 Buist Rd # 503	Milford	Mental Health Services	PE
REDCO Group	10 Buist Rd # 202	Milford	Psychiatric Treatment Facilities	PE
Safe Haven Of Pike County	402 Broad St	Milford	Domestic Abuse Information & Treatment	PE
Smetana, Jennifer	1869 Route 739 # 4	Dingmans Ferry	Social Workers	PE
Standora, Joan	224 Broad St # 206	Milford	Counselors	PE
Survivor's Resources Hotline	500 W Harford St	Milford	Crisis Centers	PE
Wadud, Michele	10 Buist Rd	Milford	Social Workers	PE
Wright, Michael T	321 5th St	Milford	Social Workers	PE
A Counseling Ctr		Bushkill	Social Workers	PS
Campbell, Linda S	8 Silk Mill Dr # 223	Hawley	Counselors	PW
Ciaravino, Elizabeth Phd	8 Silk Mill Dr # 223	Hawley	Psychologists	PW
Connections Child-Family	23 Roosevelt Dr	Hawley	Marriage & Family Counselors	PW
Jeanne H Ross Lcsw	800 Lincoln Ct	Hawley	Social Workers	PW
Lawrence, Kelly S	8 Silk Mill Dr # 201	Hawley	Counselors	PW
Poconos Center-Psychological	8 Silk Mill Dr # 223	Hawley	Psychologists	PW
Tepper Jesse J PHD	105 Heron Bay	Hawley	Psychologists	PW
Vennie, Kathryn	1319 Purdytown Tpke	Hawley	Counseling Services	PW
Beier Counseling Svc	109 9th St # 1	Honesdale	Counseling Services	WC
Bell, Jamie	3057 Eric J Williams Mer	Waymart	Psychologists	WC
Brinkerhoff, Roger L	527 Atco Rd	Milanville	Social Workers-Clinical	WC
Cousins, Hilary	600 Maple Ave	Honesdale	Social Workers-Clinical	WC
Coy, Natasha	196 Eric J Williams Mem	Waymart	Psychologists	WC
Honesdale Wellness Ctr	602 Church St	Honesdale	Counseling Services	WC
Lahlou, Shadia	840 Main St	Honesdale	Social Workers	WC
Maternal & Family Health Svc	273 Grandview Ave # 4	Honesdale	Marriage & Family Counselors	WC
Northeast Counseling Assoc	403 Spinner Rd	Honesdale	Marriage & Family Counselors	WC

NAME	ADDRESS	CITY	Primary SIC Description	PWA Comm.
Peary, Kristina N	602 Church St	Honesdale	Counselors	WC
Step By Step	616 Main St # 305	Honesdale	Mental Health Services	WC
Thompson, Susan M	174 Prompton Rd	Honesdale	Counselors-Licensed Professional	WC
Tina Pineiro Hypnosis-Life	742 Main St # 201	Honesdale	Mental Health Counselors	WC
Victims' Intervention Program	1006 Church St	Honesdale	Domestic Abuse Information & Treatment	WC
Wayne County Behaviorial Health	213 6th St	Honesdale	Mental Health Services	WC
Wayne County Drug-Alcohol Cmmn	318 10th St	Honesdale	Alcoholism Information & Treatment Ctrs	WC
Wayne Memorial Behavioral Hlth	600 Maple Ave Frnt	Honesdale	Counseling Services	WC
WITT, Kimberly	840 Main St	Honesdale	Social Workers	WC
Alpha & Omega Counseling Ctr	501 Route 590 #D	Hamlin	Counseling Services	WS
Blair, Marcela	369 Renwood Court	Lake Ariel	Social Workers	WS
Butler Dodi Ann	1434 Mount Cobb Rd	Jefferson Townshi	Counselors	WS
Devereux Pocono Ctr Admin	1547 Mill Creek Rd	Newfoundland	Mental Health Services	WS
Grierson, Suzanne L	1258 Purdytown Tpke #	Lakeville	Social Workers-Clinical	WS
Linda S Campbell LLC	1258 Purdytown Tpke	Lakeville	Psychologists	WS
Little Creek Lodge	359 Easton Tpke	Lake Ariel	Alcoholism Information & Treatment Ctrs	WS
Shafer, Stephen	113 Mount Cobb Hwy #	Lake Ariel	Counselors	WS

Map 2 – Clinics, Health Services Sites and Hospitals



NAME	ADDRESS	CITY	Primary SIC Description	PWA Comm.
Advanced Cardiology Specilsts	141 Salem Ave # 144	Carbondale		CA
Alliance Radiology	50 Electric St	Childs	Diagnostic Imaging Centers	CA
Allied Rehab	155 Brooklyn St # 2	Carbondale	Rehabilitation Services	CA
Allied Services	155 Brooklyn St # 2	Carbondale	Rehabilitation Services	CA
Carbondale Center	10 Hart Pl	Carbondale	Rehabilitation Services	CA
Carbondale Family Health	141 Salem Ave # 302	Carbondale	Clinics	CA
Carbondale Lakeland Family	254 Brooklyn St # 1	Carbondale		CA
Confident Care	450 Hickory Ridge Rd	Greenfield Townsh	Home Health Service	CA
Creekside Health & Rehab Ctr	45 N Scott St	Carbondale	Rehabilitation Services	CA
Davita Childs Dialysis	101 S Main St	Childs	Dialysis	CA
Davita Childs Dialysis	101 Main St	Childs		CA
Endless Mountain Med Clinic	1866 State Rte 106	Clifford		CA
Geisinger Medical Group	141 Salem Ave # 1	Carbondale		CA
Genesis Healthcare Carbondale	10 Hart Pl	Carbondale	Nursing & Convalescent Homes	CA
I Care 4 U	30 N Church St	Carbondale		CA
Intermountain Medical Group	10 Dundaff St	Carbondale		CA
Kielar Eye Care	78 Salem Ave	Carbondale		CA
Maternal & Family Health Svc	5 S Washington Ave	Jermyn	Health Services	CA
Medstaffers	1300 Old Plank Rd # 200	Mayfield	Home Health Service	CA
Mulberry Medical Ctr	141 Salem Ave	Carbondale		CA
Ne Eye Institute	150 Brooklyn St # 1	Carbondale		CA
Nepa Community Health Care	127 Route 106	Greenfield Township		CA
Northeastern Eye Institute	150 Brooklyn St # 1	Carbondale		CA
Paragon Home Health Care Corp	36 N Scott St	Carbondale	Home Health Service	CA
Partners In Pediatric	42 N Scott St	Carbondale		CA
Physicians Health Alliance	150 Brooklyn St # 3	Carbondale		CA
Primary Care Medicine	165 Fallbrook St	Carbondale		CA
Pro Care	82 N Main St # 1	Carbondale		CA
Quinn Mariotti & Abod	2 7th Ave	Carbondale		CA
Strp Medical Group	5 S Washington Ave	Jermyn		CA
United Surgical Assoc	75 N Scott St	Carbondale		CA
Valley Oral Maxillofacial Surg	421 Main St	Childs	Clinics	CA
Wright Center For Graduate Med	5 S Washington Ave	Jermyn	Clinics	CA
Wright Center For Primary Care	5 S Washington Ave	Jermyn		CA
Carl W O Hara Dc	632 Main St	Forest City		FC
Comprehensive Physical Therapy	354 Main St	Forest City	Clinics	FC
Forest City Nurse & Rehab Ctr	915 Delaware St	Forest City	Home Health Service	FC
Forest City Personal Care	911 Delaware St	Forest City	Nursing & Convalescent Homes	FC
Mcandrew Family Health Ctr	111 Main St	Vandling		FC
Memorial Satilla	616 Main St	Forest City		FC
Northeast Pa Equine Clinic LLC	4326 State Route 1001	Thompson	Clinics	FC
Tlc Family Eye Care Inc	852 Main St	Vandling		FC
Wayne Memorial Hospital Outptn	630 Main St	Forest City	Outpatient Services	FC
739 Chiropractic Care Ctr	114 Saint Vincent Dr	Milford		PE
A M Acupuncture LLC	510 Route 6 And 209 # 1	Milford	Acupuncture	PE
Above The Rest Hm Care Svc LLC	302 E Harford St	Milford	Home Health Service	PE
Advanced Chiropractic	113 7th St # 6	Milford		PE
Advanced Imaging	10 Buist Rd	Milford	Diagnostic Imaging Centers	PE
Ahs Hospital Corp	111 E Catherine St	Milford		PE
Andovr Orthopedics	1592 Route 739	Dingmans Ferry		PE

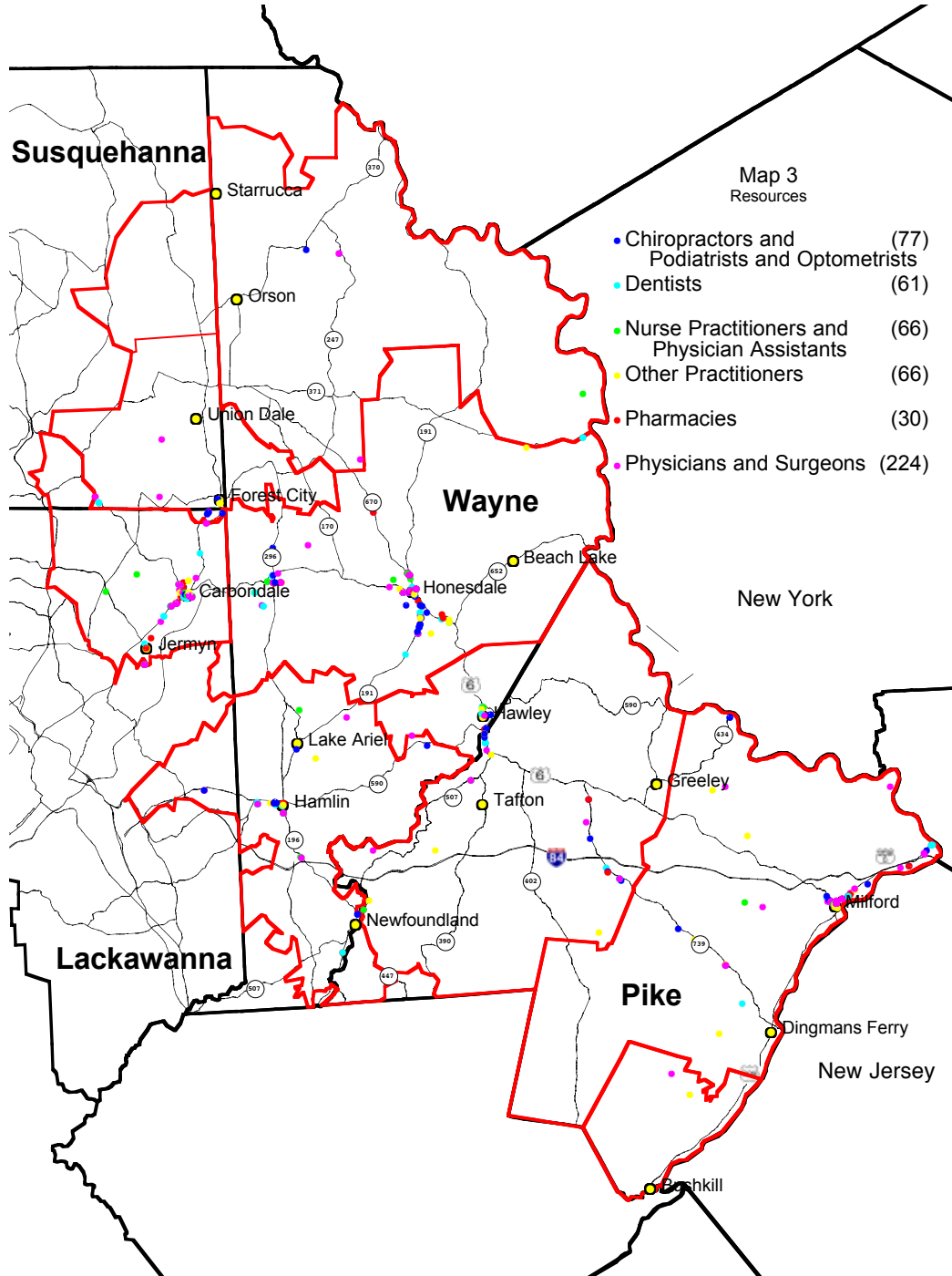
NAME	ADDRESS	CITY	Primary SIC Description	PWA Comm.
Atlantic Medical Group	111 E Catherine St # 130	Milford		PE
Atlantic Medical Group	111 E Catherine St # 250	Milford		PE
Belle Reve Senior Living Ctr	404 E Harford St	Milford	Nursing & Convalescent Homes	PE
Bon Secours Charity Health	906 Pennsylvania Ave	Matamoras		PE
Bon Secours Charity Health	104 Bennett Ave # 2c	Milford		PE
Bon Secours Health Partners	111 E Catherine St # 230	Milford		PE
Cardiology Associates-Sussex	111 E Catherine St # 220	Milford		PE
Carestat Health Inc	110 Shady Ln # 2	Milford	Health Services	PE
Comprehensive Pain Management	518 Route 6 And 209	Milford		PE
Customize Rx	120 Hulst Dr	Matamoras		PE
Firm Foundation Health & Fitns	1831 Route 739	Dingmans Ferry	Health Services	PE
Guardian Community Svc	400 Broad St	Milford	Home Health Service	PE
Jeffers Neck & Back Pain Ctr	101 Roberts Ln # 1b	Milford		PE
Karen Ann Quinlan Hospice	104 Bennett Ave # 1a	Milford	Hospices	PE
Middletown Community Health	221 Broad St	Milford	Health Services	PE
Milford Health & Wellness	111 E Catherine St # 120	Milford	Rehabilitation Services	PE
Milford Health & Wellness Ctr		Milford	Health Services	PE
Milford Med Care	111 E Catherine St # 230	Milford		PE
Milford Senior Care	264 Route 6 And 209	Milford	Residential Care Homes	PE
Milford Urgent Care	111 E Catherine St # 130	Milford	Physicians & Surgeons- Emergency Service	PE
Milford Urgent Care	111 E Catherine St # 110	Milford		PE
Milford Urgent Care	111 E Catherine St # 130	Milford		PE
Neurological Art Associated	104 Bennett Ave # 2b	Milford		PE
Northeastern Behavioral Health	201 Water St # 1	Milford	Health Services	PE
Pain & Neuropathy Ctr Of Pa PC	905 Pennsylvania Ave # 1	Matamoras	Pain Control	PE
Pediatric Practices	510 Route 6 And 209 # 1	Milford		PE
Pocono Center For Oral Surgery	16 Pennsylvania Ave	Matamoras		PE
Pocono Medical Care Advanced	303 W Harford St # 1	Milford		PE
Pocono Ob/Gyn	1592 Route 739 # 1	Dingmans Ferry		PE
Pocono Oral & Facial Surgery	16 Pennsylvania Ave	Matamoras		PE
Premiere Health Assoc	111 E Catherine St # 110	Milford		PE
Primary Care Partners	111 E Catherine St # 140	Milford		PE
Progressive Health Of Pa Inc	112 E Harford St	Milford	Rehabilitation Services	PE
Sleep Medical/Digi Trace		Milford	Sleep Disorders- Diagnostic/Treatment	PE
Tri County Ear Nose & Throat	184 Route 6 And 209	Milford		PE
Tri-State Eye Clinic	510 Route 6 And 209 # 6	Milford		PE
Tri-State Pregnancy	105 Wheatfield Dr # 4	Milford	Abortion Alternatives Organizations	PE
Twin Cedars Assisted Living	364 Little Walker Rd	Shohola	Residential Care Homes	PE
Upper Delaware Valley Cancer	113 Pocono Dr	Milford		PE
Worker Bee Cmnty Acupuncture	101 Roberts Ln	Milford	Acupuncture	PE
About Face Orthodontics	212 Main Ave	Hawley		PW
Broughton, Donald O Dc	844 Church St	Hawley		PW
Church Street Chiropractic	846 Church St	Hawley		PW
Deblon Family Chiropractic Ofc	438 Route 739	Hawley		PW
Greentown Medical Ctr	1623 Route 507	Greentown		PW
Horizon Dental Cares	2537 Route 6	Hawley		PW
Lakota Healthcare	2489 Route 6 # 7	Hawley	Health Services	PW
Lakota Healthcare	71 Aspen Ridge Dr	Hawley	Health Services	PW
Maternal & Family Health Svc	8 Silk Mill Dr # 226	Hawley	Health Services	PW
Paws Up On Health	181 Route 590	Greeley	Health Services	PW

NAME	ADDRESS	CITY	Primary SIC Description	PWA Comm.
Pike County Home Health Ctr	750 Route 739	Lords Valley	Home Health Service	PW
Pike County Lab & Radiology	750 Route 739	Hawley	Laboratories-Medical	PW
Pike County Womens Health Ctr	750 Route 739 # C	Lords Valley		PW
Pike Family Health Ctr	750 Route 739 # B	Hawley		PW
Pinnacle Family Health	132 Manly Rd	Tafton	Health Services	PW
Pinnacle Health Partners	132 Manly Rd	Tafton		PW
Pocono Companion Care	1361 Route 507	Greentown	Home Health Service	PW
Pyramid Healthcare	2515 Route 6	Hawley	Health Services	PW
UPMC Pinnacle Partners	2832 State Route 507	Hawley	Clinics	PW
Wayne Memorial Hosp Lab Svc	RR 507	Tafton	Laboratories-Medical	PW
WMH Tafton Lab	Route 507	Tafton	Clinics	PW
Womans Healthcare	750 Route 739	Lords Valley		PW
Advanced Inpatient Medicine	601 Park St	Honesdale		WC
Behavioral Health Clinic	600 Maple Ave # 6	Honesdale		WC
Bethany Village	150 Noble Ln	Bethany	Personal Care Homes	WC
Camp Ladore Health Care		Waymart	Health Services	WC
Care Givers America		Honesdale	Home Health Service	WC
Caregivers America LLC	809 Main St	Honesdale	Health Services	WC
Carl J Milks PC	17 Beech Grove Rd	Honesdale		WC
Davita Honesdale Dialysis Ctr	600 Maple Ave # 8	Honesdale	Dialysis	WC
Delta Medix	377 Roosevelt Hwy	Waymart	Diagnostic Imaging Centers	WC
D'Oro, Louis C MD	600 Maple Ave # 1	Honesdale		WC
Ellen Memorial Health Care	23 Ellen Memorial Ln	Honesdale	Health Services	WC
Er 1	601 Park St	Honesdale		WC
Family Eye Care Of Nepa	3373 Lake Ariel Hwy # 2	Honesdale		WC
First Choice Chiropractic	631 Belmont Tpke	Waymart		WC
Good Shepherd Rehabilitation	601 Park St	Honesdale	Rehabilitation Services	WC
Good Shepherd Wayne-Inpt Rehab	909 Main St	Honesdale	Rehabilitation Services	WC
Great Valley Cardiology	29 Woodlands Dr	Waymart		WC
Great Valley Cardiology	29 Woodlands Dr # 305	Waymart		WC
Higher Systems Diagnostics	650 Park St	Honesdale		WC
Highland Physicians	1839 Fair Ave	Honesdale		WC
Highland Physicians LTD	1831 Fair Ave	Honesdale		WC
Highland Physicians LTD	1839 Fair Ave	Honesdale		WC
Himalayan Institute-Total Hlth	952 Bethany Tpke	Honesdale		WC
Honesdale Eye Assoc	738 Main St	Honesdale		WC
Honesdale Family Health Ctr	600 Maple Ave # 2	Honesdale		WC
Honesdale Orthopedic Surgery	470 Sunrise Ave	Honesdale		WC
Honesdale Surgical Assoc	600 Maple Ave # 1	Honesdale		WC
Intermountain Medical Group	263 Carbondale Rd	Waymart		WC
Mogerman Jason Orthopedics	27b Woodlands Dr	Waymart		WC
Motion Physical Therapy	232 Sunrise Ave Frnt	Honesdale		WC
Mountain Laurel Surgery Ctr	1860 Fair Ave # A	Honesdale	Surgical Centers	WC
Muta Metro	2615 Easton Tpke	Waymart	Clinics	WC
North Eastern Gastro	1860 Fair Ave	Honesdale		WC
Northeastern Eye Institute	626 Park St	Honesdale		WC
Northeastern Gastroenterology	1860 Fair Ave # A	Honesdale		WC
Northeastern Rehabilitation	600 Maple Ave # 3	Honesdale	Rehabilitation Services	WC
Pa Treatment Healing	1855 Fair Ave	Honesdale	Home Health Service	WC
Pediatric Practices	1837 Fair Ave	Honesdale		WC
Pediatric Practices	27b Woodlands Dr	Waymart		WC
Pediatric Practices-Ne Penna	1837 Fair Ave	Honesdale		WC
Penn State Hershey Nrsrgy	600 Maple Ave # 2	Honesdale		WC



NAME	ADDRESS	CITY	Primary SIC Description	PWA Comm.
Phillips, Kenneth A OD	314 Honesdale Rd	Waymart		WC
Precision Eye Group	3319 Lake Ariel Hwy	Honesdale		WC
Prime Med Medical Group	3306 Lake Ariel Hwy	Honesdale		WC
Sanderson Dental	112 10th St	Honesdale		WC
Select Rehab	23 Ellen Memorial Ln	Honesdale	Rehabilitation Services	WC
Serenity Manor East	45 Castle Hill Rd	Beach Lake	Nursing & Convalescent Homes	WC
Simmons Hannah P Herbiologist	614 Main St	Honesdale	Health Information & Referral Programs	WC
Smiles By Design	3373 Lake Ariel Hwy # 1	Honesdale		WC
Sprout Dental	177 Sunrise Ave	Honesdale		WC
Tri County Ear Nose-Throat PC	650 Park St # 1	Honesdale		WC
UPMC Pinnacle Partners	Rte 507	Honesdale	Clinics	WC
Waymart Family Health	29 Woodlands Dr	Waymart	Health Care Facilities	WC
Waymart Outpatient Ctr	14 W Roosevelt Hwy	Waymart	Outpatient Services	WC
Wayne Community Health Ctr	600 Maple Ave # 2	Honesdale	Health Services	WC
Wayne Memorial Cmnty Health	500 Park St	Honesdale	Health Services	WC
Wayne Memorial Cmnty Health	600 Maple Ave # 4	Honesdale		WC
Wayne Memorial Hosp Hematology	601 Park St	Honesdale		WC
Wayne Memorial Hosp Lab Svc	RR 6	Honesdale	Laboratories-Medical	WC
Wayne Memorial Hosp Outpatient	57 Route 6 Plz	Honesdale	Rehabilitation Services	WC
Wayne Memorial Hospital	3202 Lake Ariel Hwy	Honesdale	Hospitals	WC
Wayne Memorial Hospital	601 Park St	Honesdale	Hospitals	WC
Wayne Memorial Hospital	27 Woodlands Dr	Waymart	Hospitals	WC
Wayne Memorial Hospital	601 Park St	Honesdale		WC
Wayne Memorial Hospital Lab	601 Park St	Honesdale	Laboratories-Medical	WC
Wayne Memorial Rehab Svc	600 Maple Ave # 2	Honesdale	Rehabilitation Services	WC
Wayne Memorial's New	601 Park St	Honesdale	Birth Centers	WC
Wayne Woodland Manor	37 Woodlands Dr	Waymart	Nursing & Convalescent Homes	WC
Womens Healthcare	110 Park St	Honesdale		WC
Zefran Dental Group	1214 Texas Palmyra Hwy	Honesdale		WC
Damascus Dental Ctr	1731 Cochection Tpke	Damascus		WN
Northern Wayne Family Health	412 Como Rd	Lake Como		WN
Briarwood Manor	878 Main St	Newfoundland	Personal Care Homes	WS
Brookside Personal Care Home	265 Sterling Rd	Newfoundland	Personal Care Homes	WS
Carton, James T Dc	784 Purdytown Tpke	Lakeville		WS
Family First Vision	1315 Lake Ariel Hwy	Lake Ariel		WS
Hamlin Dental Ctr	Rt 191	Hamlin		WS
Hamlin Family Health Ctr	543 Easton Tpke # 105	Lake Ariel		WS
Horizon Medical Corp	358 Hamlin Hwy	Hamlin		WS
Julia Ribaldo Extended Care	1404 Golf Park Dr	Lake Ariel	Rehabilitation Services	WS
Labcorp	358 Hamlin Hwy #2	Hamlin	Laboratories-Medical	WS
Northeastern Eye Institute	569 Hamlin Hwy # C	Lake Ariel		WS
Nova Care Rehabilitation	410 Hamlin Hwy # A	Hamlin	Rehabilitation Services	WS
Pediatric Practices	62 Industrial Park Rd	Lake Ariel		WS
Saber Healthcare	1404 Golf Park Dr	Lake Ariel	Health Services	WS
Wexford	1030 E Roy Furman Hwy	Lake Ariel	Health Care Facilities	WS
Wyoming Valley Health Care	Golf Park Dr	Lake Ariel	Health Services	WS

### Map 3 – Health Care Practitioners



NAME	ADDRESS	CITY	Primary SIC Description	PWA Comm.
Advanced Cardiology Speclst	141 Salem Ave # 1	Carbondale	Nurses-Practitioners	CA
Advanced Cardiology Speclsts	141 Salem Ave # 144	Carbondale	Physicians & Surgeons	CA
Alunni, Rebecca D Pa	5 S Washington Ave	Jermyn	Physicians Assistants	CA
Babcanec, Andrew DPT	82 N Main St # 1	Carbondale	Physical Therapists	CA
Barooah, Jumeer MD	5 S Washington Ave	Jermyn	Physicians & Surgeons	CA
Bekele, Tamrat MD	1866 State Rte 106	Clifford	Physicians & Surgeons	CA
Bekele, Tamrat MD	165 Fallbrook St	Carbondale	Physicians & Surgeons	CA
Bifano, Martin J DDS	957 Main St	Simpson	Dentists	CA
Brown, Charles B Dmd	58 8th Ave # 1	Carbondale	Dentists	CA
Buraczewski Donna	30 N Church St	Carbondale	Optometrists OD	CA
Burke, Timothy K DO	5 S Washington Ave	Jermyn	Physicians & Surgeons	CA
Burns, Justin L DDS	421 Main St	Childs	Dentists	CA
Butts, Lauren J Pa	1571 Heart Lake Rd	Scott Township	Physicians Assistants	CA
Carbondale Chiropractic Ctr	267 Brooklyn St # A	Carbondale	Chiropractors DC	CA
Carbondale Rehab Ctr	155 Brooklyn St	Carbondale	Physical Therapists	CA
Coar, Alycia M PA	5 S Washington Ave	Jermyn	Physicians Assistants	CA
Commonwealth Health Lab Svc	150 Brooklyn St	Carbondale	Physicians & Surgeons	CA
Commonwealth Health Physician	150 Brooklyn St # 3	Carbondale	Physicians & Surgeons	CA
Comprehensive Pt	150 Brooklyn St # 2c	Carbondale	Physical Therapists	CA
CVS/Pharmacy	88 Brooklyn St	Carbondale	Pharmacies	CA
CVS/Pharmacy	95 Brooklyn St	Carbondale	Pharmacies	CA
Davis, Neal M MD	254 Brooklyn St # 1	Carbondale	Physicians & Surgeons	CA
Debarbieri, Victoria M Np	5 S Washington Ave	Jermyn	Nurses-Practitioners	CA
Desando, Mary Ann OD	150 Brooklyn St # 1	Carbondale	Optometrists OD	CA
Destito, Nicholas Dc	267 Brooklyn St	Carbondale	Chiropractors DC	CA
Douaihy, Katharine PHD	141 Salem Ave # 1	Carbondale	Physicians & Surgeons	CA
Dr J Garry Wroblecki Jr Do	75 N Scott St	Carbondale	Physicians & Surgeons	CA
Dzielak, Edward J MD	150 Brooklyn St # 3	Carbondale	Physicians & Surgeons	CA
Endless Mountains Pharmacy	1866 State Route 106 #	Clifford	Pharmacies	CA
Endless Mt Medical Clinic	1866 State Route 106 #	Clifford	Physicians & Surgeons	CA
Family Pharmacy		Carbondale	Pharmacies	CA
Favuzza, Allyson K Np	5 S Washington Ave	Jermyn	Nurses-Practitioners	CA
Figliomeni Drug Store	64 Fallbrook St # 1	Carbondale	Pharmacies	CA
Figliomeni Pharmacy Care	19 Dundaff St	Carbondale	Pharmacies	CA
Gallagher, Lawrence F DDS	59 7th Ave	Carbondale	Dentists	CA
Ganz, Samuel DO	141 Salem Ave	Carbondale	Physicians & Surgeons	CA
Geisinger Medical Group	267 Brooklyn St # B	Carbondale	Nurses-Practitioners	CA
Greer, Nancy NP	5 S Washington Ave	Jermyn	Nurses-Practitioners	CA
Haley Family Practice	10 Dundaff St	Carbondale	Physicians & Surgeons	CA
Harrington, Catherine A	5 S Washington Ave	Jermyn	Nurses-Practitioners	CA
Hopkins, Jamie A DO	150 Brooklyn St # 3	Carbondale	Physicians & Surgeons	CA
Intermountain Eye Assoc	78 Salem Ave	Carbondale	Optometrists OD	CA
Intermountain Medical Group	10 Dundaff St	Carbondale	Nurses-Practitioners	CA
Jennings, Eugene L MD	30-32 N Main St	Carbondale	Physicians & Surgeons	CA
Jordan Jr, Arthur J DO	150 Brooklyn St # 1	Carbondale	Physicians & Surgeons	CA
Jordan, Christopher MD	150 Brooklyn St # 1	Carbondale	Physicians & Surgeons	CA
Joseph C Marzaccoco Dpm	30 Lincoln Ave	Carbondale	Podiatrists	CA
KALT, Jennifer	45 N Scott St	Carbondale	Physical Therapists	CA
Kang, Min Jung MD	5 S Washington Ave	Jermyn	Physicians & Surgeons	CA
Kayal, Michael DO	141 Salem Ave # 1	Carbondale	Physicians & Surgeons	CA
Kemick, Sarah	127 Route 106	Greenfield Townsh	Nurses-Practitioners	CA
Kilmer, Deana Marie	124 Sandy Banks Rd	Greenfield Townsh	Nurses-Practitioners	CA
Krayer, Kristen	10 Hart Pl	Carbondale	Physical Therapists	CA
Lakeland Family Practice	254 Brooklyn St # 1	Carbondale	Physicians & Surgeons	CA

NAME	ADDRESS	CITY	Primary SIC Description	PWA Comm.
Lena, Marie MD	42 N Scott St	Carbondale	Physicians & Surgeons	CA
Macejkovic, Jennifer	5 S Washington Ave	Jermyn	Dental Hygienists	CA
Machiesky, Ashley Pa	100 Lincoln Ave	Carbondale	Physicians Assistants	CA
Manahan, Ferdinand J MD	101 Main St	Childs	Physicians & Surgeons	CA
Mancuso, Fred J Dc	32 River St	Carbondale	Chiropractors DC	CA
Manetti, Niko Dpt	82 N Main St # 1	Carbondale	Physical Therapists	CA
Marc Morris Dpm	49 Salem Ave	Carbondale	Podiatrists	CA
Mariotti, John R DDS	2 7th Ave	Carbondale	Dentists	CA
Martin, Nicole M MD	5 S Washington Ave	Jermyn	Physicians & Surgeons	CA
Meyers, Stephanie A	10 Hart Pl	Carbondale	Speech Pathologists	CA
Micknick, Theresa Pa	165 Fallbrook St	Carbondale	Physicians Assistants	CA
Mizin, Lakshmi D J MD	127 Route 106	Greenfield Townsh	Physicians & Surgeons	CA
Moro, Frank M MD	150 Brooklyn St # 3	Carbondale	Physicians & Surgeons	CA
Murphy, Angela M	5 S Washington Ave	Jermyn	Nurses-Practitioners	CA
Northeastern Eye Institute	150 Brooklyn St # 1	Carbondale	Physicians & Surgeons	CA
Novak, Gregg J DO	5 S Washington Ave	Jermyn	Physicians & Surgeons	CA
Offices At 100 Ent Dr Crbndl	100 Enterprise	Carbondale	Physicians & Surgeons	CA
Partners In Pediatrics Crbndl	42 N Scott St	Carbondale	Physicians & Surgeons	CA
Patrick T Hayes DDS	314 Rushbrook St	Jermyn	Dentists	CA
Philip F Horne Dpm	34 N Church St	Carbondale	Podiatrists	CA
Physicians Health Alliance	150 Brooklyn St # 3	Carbondale	Physicians & Surgeons	CA
Pinsky, Alexander J MD	141 Salem Ave # 302	Carbondale	Physicians & Surgeons	CA
Pivot Physical Therapy	82 N Main St	Carbondale	Physical Therapists	CA
Posdon, Janine	30-32 N Main St	Carbondale	Nurses-Practitioners	CA
Primary Care Medicine	165 Fallbrook St	Carbondale	Physicians & Surgeons	CA
Quinn Mariotti Abod	2 7th Ave	Carbondale	Dentists	CA
Quinn Mariotti Orthodontics	2 7th Ave	Carbondale	Dentists	CA
Rajan, Mulloth MD	150 Brooklyn St # 3	Carbondale	Physicians & Surgeons	CA
Ramos, Julio A MD	5 S Washington Ave	Jermyn	Physicians & Surgeons	CA
Rao, Madhava S MD	141 Salem Ave # 144	Carbondale	Physicians & Surgeons	CA
Rashid, Seleena DO	5 S Washington Ave	Jermyn	Physicians & Surgeons	CA
Rite Aid	54 N Main St	Carbondale	Pharmacies	CA
Samonte, Enrique MD	5 S Washington Ave	Jermyn	Physicians & Surgeons	CA
Schlude, Maggie M Np	5 S Washington Ave	Jermyn	Nurses-Practitioners	CA
Shea, Mary Dpt	82 N Main St # 1	Carbondale	Physical Therapists	CA
Sheth, Jignesh MD	5 S Washington Ave	Jermyn	Physicians & Surgeons	CA
Shi, Qi MD	5 S Washington Ave	Jermyn	Physicians & Surgeons	CA
Soliman, Joseph S MD	92 Salem Ave	Carbondale	Physicians & Surgeons	CA
Sparks, Bradley D OD	30 N Church St	Carbondale	Optometrists OD	CA
Sterling Pharmacy	547 Washington Ave	Jermyn	Pharmacies	CA
Stevens, Lauren M PA	5 S Washington Ave	Jermyn	Physicians Assistants	CA
Swetter, Russell P DDS	1530 Sr 106	Clifford	Dentists	CA
Swetter, Russell P DDS	46 Main St	Clifford	Dentists	CA
Thomas-Hemak, Linda J MD	5 S Washington Ave	Jermyn	Physicians & Surgeons	CA
Tuzze's Pharmacy	509 Poplar St	Mayfield	Pharmacies	CA
Vale, Steven MD	78 Salem Ave	Carbondale	Physicians & Surgeons	CA
Valley Oral Maxillofacial Surg	421 Main St	Childs	Dentists	CA
Voyce, Stephen J MD	141 Salem Ave # 1	Carbondale	Physicians & Surgeons	CA
Williams, Marie A Np	30-32 N Main St	Carbondale	Nurses-Practitioners	CA
Wright Center For Primary Care	5 S Washington Ave	Jermyn	Nurses-Practitioners	CA
Wrobleski Jr, J Garry DO	75 N Scott St	Carbondale	Physicians & Surgeons	CA
Zangardi, Jennifer M MD	5 S Washington Ave	Jermyn	Physicians & Surgeons	CA
Carlson, Tammy L OD	852 Main St	Vandling	Optometrists OD	FC
Daniels, Susanna G	354 Main St	Forest City	Physical Therapists	FC

NAME	ADDRESS	CITY	Primary SIC Description	PWA Comm.
David R Tomazic Do	632 Main St	Forest City	Nurses-Practitioners	FC
David R Tomazic Do	111 Main St	Vandling	Physicians & Surgeons	FC
Defrancesco, Rebecca J Dpt	354 Main St	Forest City	Physical Therapists	FC
Family Foot Specialist	632 Main St	Forest City	Podiatrists	FC
Genco Dental Care	518 Main St	Forest City	Dentists	FC
Granville, Christopher MD	616 Main St	Forest City	Physicians & Surgeons	FC
Hollis, Krista A NP	111 Main St	Vandling	Physicians & Surgeons	FC
Imperiale, Amanda M	354 Main St	Forest City	Physical Therapists	FC
Langsfeld III, Morton MD		Union Dale	Physicians & Surgeons	FC
Multiple Chiropractic Therapy	615 Hudson St	Forest City	Chiropractors DC	FC
Murray, Joseph C Dpt	354 Main St	Forest City	Physical Therapists	FC
O'Hara, Carl W DC	632 Main St	Forest City	Chiropractors DC	FC
Red Cross Pharmacy	420 Main St	Forest City	Pharmacies	FC
Santarsiero, Frank J Dpt	354 Main St	Forest City	Physical Therapists	FC
Spinelli, Sara C Ot	354 Main St	Forest City	Physical Therapists	FC
Tri-County Chiro Of Nepa	436 Main St	Forest City	Chiropractors DC	FC
Wyckoff, Francis J MD	Rd 1	Forest City	Physicians & Surgeons	FC
Access Physical Thrpy-Wellness	518 Route 6 And 209	Milford	Physical Therapists	PE
Advanced Dermatology	303 W Harford St # 303	Milford	Physicians & Surgeons	PE
Advanced Health	906 Pennsylvania Ave	Matamoras	Physicians & Surgeons	PE
Ajay Kumar MD	905 Pennsylvania Ave # 1	Matamoras	Physicians & Surgeons	PE
Alam, Mehjabeen P MD	906 Pennsylvania Ave	Matamoras	Physicians & Surgeons	PE
B Palydowycs Severin Assoc	396 Route 6 And 209 # 1	Milford	Physicians & Surgeons	PE
Barry, Grace	101 Pocono Dr	Milford	Speech Pathologists	PE
Berlin, Beth A OD	120 Hulst Dr	Matamoras	Optometrists OD	PE
Boyd, Ryan M Pt	100 Wheatfield Dr	Milford	Physical Therapists	PE
Boyle Harry G DMD	211 E Harford St	Milford	Dentists	PE
Bradish, Glen E MD	1592 Route 739	Dingmans Ferry	Physicians & Surgeons	PE
Brooks, Jane F MD	111 Wheatfield Dr # 2	Milford	Physicians & Surgeons	PE
Brutico, Anthony J DO	111 E Catherine St # 130	Milford	Physicians & Surgeons	PE
Buckley, Marina MD	303 W Harford St # 1	Milford	Physicians & Surgeons	PE
Buckley, Richard E MD	303 W Harford St # 1	Milford	Physicians & Surgeons	PE
Burgio, Michael T MD	111 E Catherine St	Milford	Physicians & Surgeons	PE
Buyer, David S MD	111 E Catherine St # 220	Milford	Physicians & Surgeons	PE
Byadgi, Shalini C MD	111 E Catherine St # 230	Milford	Physicians & Surgeons	PE
Cahoon, Stephen E	510 Route 6 And 209 # 1	Milford	Physicians Assistants	PE
Calabrese, Carol MD	111 E Catherine St # 140	Milford	Physicians & Surgeons	PE
Capozzoli, Alexis N MD	111 E Catherine St # 130	Milford	Physicians & Surgeons	PE
Cardiology Associates-Sussex	111 E Catherine St # 220	Milford	Physicians & Surgeons	PE
Catanzaro, Ashley Lyn	101 Pocono Dr	Milford	Physical Therapists	PE
Cenci, David T Dc	510 Route 6 And 209	Milford	Chiropractors DC	PE
Chiapparelli, Jenny L	105 Wheatfield Dr # 3	Milford	Physical Therapists	PE
Cho, Sung H DMD	16 Pennsylvania Ave	Matamoras	Physicians & Surgeons	PE
Codispoti, Cindy DO	111 E Catherine St # 220	Milford	Physicians & Surgeons	PE
Comprehensive Eye Assoc LLC	1409 Route 739	Dingmans Ferry	Optometrists OD	PE
Customize Rx	120 Hulst Dr	Matamoras	Pharmacies	PE
Davita Delaware Valley	102 Davita Dr	Milford	Physicians & Surgeons	PE
Delprete, Jacklyn Np	264 Route 6 And 209	Milford	Nurses-Practitioners	PE
Deweese, Johanna DDS	16 Pennsylvania Ave	Matamoras	Dentists	PE
Donna M Coppola Dmd Fagd PC	102 Wheatfield Dr # D	Milford	Dentists	PE
Drayer Physical Therapy Inst	100 Wheatfield Dr # 1	Milford	Physical Therapists	PE
Evers, Martin L MD	104 Bennett Ave # 2c	Milford	Physicians & Surgeons	PE
Family Smile Ctr Inc	201 W Harford St # 101	Milford	Dentists	PE
Fischer, John OD	102 Wheatfield Dr # C	Milford	Optometrists OD	PE

NAME	ADDRESS	CITY	Primary SIC Description	PWA Comm.
Frankel Foot & Ankle Ctr	518 Route 6 And 209	Milford	Podiatrists	PE
Garrison, David M MD	111 E Catherine St # 230	Milford	Physicians & Surgeons	PE
Gates W Parker Dental	934 Milford Rd	Dingmans Ferry	Dentists	PE
Haggerty, Joseph M OD	510 Route 6 And 209 # 6	Milford	Optometrists OD	PE
Haggerty, Lisa M OD	220 Route 6 And 209	Milford	Optometrists OD	PE
Haggerty, William B DDS	601 W Harford St # 1	Milford	Dentists	PE
Harris, Julianne	279 Timberwolf Dr	Dingmans Ferry	Physical Therapists	PE
Hartey, Edward J Dc	600 Pennsylvania Ave	Matamoras	Chiropractors DC	PE
Hartey, Jordan	102 Dingman Pl	Dingmans Ferry	Physical Therapists	PE
Hartey, Thomas J Dc	114 Saint Vincent Dr	Milford	Chiropractors DC	PE
Hubbard, Donald M Pt	1346 Route 739	Dingmans Ferry	Physical Therapists	PE
Internal Medicine Milford Des	111 E Catherine St # 230	Milford	Physicians & Surgeons	PE
Jaslow, Lee	1592 Route 739 # 2	Dingmans Ferry	Pharmacists	PE
Jeffers, Thomas P Dc	101 Roberts Ln # 1b	Milford	Chiropractors DC	PE
John Fischer	102 Wheatfield Dr	Milford	Optometrists OD	PE
Johnson, Nathan C MD	111 E Catherine St # 130	Milford	Physicians & Surgeons	PE
Johnson, Robert Alan MD	111 Wheatfield Dr # 2	Milford	Physicians & Surgeons	PE
Khesin, Yevgeniy I MD	104 Bennett Ave # 2b	Milford	Physicians & Surgeons	PE
Kovalchik, Jessica Ann Dc	101 Drakes Ln	Milford	Chiropractors DC	PE
Kumar, Ajay MD	905 Pennsylvania Ave # 2	Matamoras	Physicians & Surgeons	PE
Lafranco, Theresa A MD	510 Route 6 And 209 # 1	Milford	Physicians & Surgeons	PE
Limarzi, Joseph A MD	111 E Catherine St # 130	Milford	Physicians & Surgeons	PE
Liu, Philip G MD	184 Route 6 And 209	Milford	Physicians & Surgeons	PE
Lo, Kathy MD	113 Pocono Dr	Milford	Physicians & Surgeons	PE
Lyon, Kathleen A MD	201 Water St	Milford	Physicians & Surgeons	PE
Mandell, Mark MD	111 E Catherine St # 130	Milford	Physicians & Surgeons	PE
Masci, Robert L MD	111 E Catherine St # 220	Milford	Physicians & Surgeons	PE
Matamoras Dental	2 Avenue L	Matamoras	Dentists	PE
Mathews, Leann	112 E Harford St	Milford	Speech Pathologists	PE
Medicine Shoppe Pharmacy	105 Wheatfield Dr # B	Milford	Pharmacies	PE
Mendelsohn, Linda J MD	221 Broad St	Milford	Physicians & Surgeons	PE
Michael D Newmark DC	502 W Harford St # 1	Milford	Chiropractors DC	PE
Michael P Bernstein Dpm	396 Route 6 And 209 # 2	Milford	Podiatrists	PE
Milford Smile Designs	102 Wheatfield Dr # D	Milford	Dentists	PE
MILFORDMD.COM	301 W Harford St # 303	Milford	Physicians & Surgeons	PE
MILFORDMD.COM	303 W Harford St	Milford	Physicians & Surgeons	PE
Miller, Lisa Marie	221 Broad St	Milford	Nurses-Practitioners	PE
Monto, Michael DDS	16 Pennsylvania Ave	Matamoras	Dentists	PE
Moran, Timothy	518 Route 6 And 209	Milford	Physical Therapists	PE
Morecraft, John A MD	111 E Catherine St # 130	Milford	Physicians & Surgeons	PE
Mutzek, Marissa N	105 Blueberry Dr # 90	Milford	Physicians Assistants	PE
Natural Connections Inc	303 W Harford St # 303	Milford	Physicians & Surgeons	PE
Neurologic Arts Assoc	104 Bennett Ave # 2b	Milford	Physicians & Surgeons	PE
Noor A Shamim Dmd	315 Broad St # 1a	Milford	Dentists	PE
Oliver, Gwendolyn M	404 E Harford St	Milford	Physical Therapists	PE
PALIPOSUCTION.COM	303 W Harford St	Milford	Physicians & Surgeons	PE
Pathak, Lisa MD	1592 Route 739 # 1	Dingmans Ferry	Physicians & Surgeons	PE
Patients Of Ukraine Inc	544 Twin Lakes Rd	Shohola	Physicians & Surgeons	PE
Pediatric Practice-Northern Pa	396 Route 6 And 209 # 1	Milford	Physicians & Surgeons	PE
Peet, Pamela J Pt	1346 Route 739	Dingmans Ferry	Physical Therapists	PE
Pieros, Stephanie	101 Pocono Dr	Milford	Speech Pathologists	PE
Pike Physical Therapy & Ftnss	1346 Route 739	Dingmans Ferry	Physical Therapists	PE
Pocono Medical Care Inc	303 W Harford St # 1	Milford	Physicians & Surgeons	PE
Pocono Oral & Facial Surgery	16 Pennsylvania Ave	Matamoras	Dentists	PE



NAME	ADDRESS	CITY	Primary SIC Description	PWA Comm.
Ponzio, GERALYN M MD	111 E Catherine St # 110	Milford	Physicians & Surgeons	PE
Primier Health Assoc	111 E Catherine St # 110	Milford	Physicians & Surgeons	PE
Quinn Mariotti & Abod	1409 Route 739	Dingmans Ferry	Dentists	PE
Redline, Richard C MD	111 E Catherine St # 220	Milford	Physicians & Surgeons	PE
Reyes, Lisa		Shohola	Physical Therapists	PE
Rhodes, Amanda Q	111 Hulst Dr	Matamoras	Pharmacists	PE
Ross, Lawrence MD	510 Route 6 And 209 # 6	Milford	Physicians & Surgeons	PE
Scales, James L MD	1592 Route 739	Dingmans Ferry	Physicians & Surgeons	PE
Schmidt, Christopher	113 7th St # 6	Milford	Chiropractors DC	PE
Sequeira, Ricardo MD	111 E Catherine St # 250	Milford	Physicians & Surgeons	PE
Shamim, Noor A Dmd	544 Route 6 And 209	Milford	Dentists	PE
Sheehan, Nancy C MD	104 Sand Pit Road	Millrift	Physicians & Surgeons	PE
Shohola Chiropractic Ctr	105 Chauncey Thomas R	Shohola	Chiropractors DC	PE
Siegfried, Richard N MD	518 Route 6 And 209	Milford	Physicians & Surgeons	PE
Singaravelu, Nila MD	221 Broad St	Milford	Physicians & Surgeons	PE
Skylands Pediatrics	111 E Catherine St # 140	Milford	Physicians & Surgeons	PE
Spinard, Lorraine Dc	105 Chauncey Thomas R	Shohola	Chiropractors DC	PE
Staiger, Denise M	100 Wheatfield Dr	Milford	Physical Therapists	PE
Sudol, Katharine	404 E Harford St	Milford	Physical Therapists	PE
Susan Ficken Pediatric Thrpy	109 Stair Ln	Shohola	Speech Pathologists	PE
Sussex Foot & Ankle Speclsts	518 Route 6 And 209	Milford	Podiatrists	PE
Tapen, Elizabeth MD	113 Pocono Dr	Milford	Physicians & Surgeons	PE
Tishuk, Pavel P MD	104 Bennett Ave # 2b	Milford	Physicians & Surgeons	PE
Tri County Ear Nose & Throat	184 Route 209 S	Milford	Physicians & Surgeons	PE
Vergara, J Roberto MD	111 E Catherine St # 110	Milford	Physicians & Surgeons	PE
Waldman, Albert L MD	104 W High St	Milford	Physicians & Surgeons	PE
Walgreens Inside Rite Aid	100 W Harford St	Milford	Pharmacies	PE
Walmart Pharmacy	220 Route 6 And 209	Milford	Pharmacies	PE
Wardeh, Ghassan L MD	111 E Catherine St # 110	Milford	Physicians & Surgeons	PE
Weinschenk, Robert C MD	1592 Route 739	Dingmans Ferry	Physicians & Surgeons	PE
Wentworth-Douglass Hospital	1262 US 50	Milford	Physicians & Surgeons	PE
West Orange Medical Assoc PC	111 Wheatfield Dr # 2	Milford	Physicians & Surgeons	PE
Angelic Awareness	219 Woodpecker Ct	Bushkill	Holistic Practitioners	PS
Hamilton, Cheryl Lee MD	175 East Brown Street/S	Bushkill	Physicians & Surgeons	PS
Saran, Madhukar MD	640 Section 10	Bushkill	Physicians & Surgeons	PS
2 Twin Oaks Family Dentistry	219 Hudson St	Hawley	Dentists	PW
About Face Orthodontics	212 Main Ave	Hawley	Dentists	PW
Advanced Inpatient Medicine	183 Maines Rd	Hawley	Physicians & Surgeons	PW
Aronica, Charles D DO	132 Manly Rd	Tafton	Physicians & Surgeons	PW
Black, Erika Lynn	103 Spruce St # 201	Hawley	Nurses-Practitioners	PW
Blaskiewicz, Julia C MD	2489 US 6 Greshams Lan	Hawley	Physicians & Surgeons	PW
Broughton, Donald O DC	844 Church St	Hawley	Chiropractors DC	PW
Bunting, Patricia	132 Manly Rd	Tafton	Nurses-Practitioners	PW
Chandoha, Helen J OD	74 Welwood Ave	Hawley	Optometrists OD	PW
Chesna, Christine M Pt	103 Spruce St # 101	Hawley	Physical Therapists	PW
Comprehensive Physical Therapy	54 Main Ave	Hawley	Physical Therapists	PW
Croley, Alexa Dpt	1564 Route 507 # C	Greentown	Physical Therapists	PW
CVS/Pharmacy	590 Palmyr #Lakeregion	Hawley	Pharmacies	PW
CVS/Pharmacy	Lake Region Ctr	Hawley	Pharmacies	PW
Deblon Family Chiropractic Ofc	Route 739	Lords Valley	Chiropractors DC	PW
Deblon, Leland T DC	438 Route 739	Hawley	Chiropractors DC	PW
Dholakia, Rasheshkuma MD	750 Route 739	Lords Valley	Physicians & Surgeons	PW
Dittmeier, Eric Dpt	2591 Route 6 # 202	Hawley	Physical Therapists	PW
Dr Anthony S Diecidue PC	2571 Route 6 # 1	Hawley	Optometrists OD	PW

NAME	ADDRESS	CITY	Primary SIC Description	PWA Comm.
Elmtree Physical Thrpy-Wllnss	2489 Route 6	Hawley	Physical Therapists	PW
Eng-Barrett, May A DDS	212 Main Ave	Hawley	Dentists	PW
Evanish, John DDS	2537 Route 6	Hawley	Dentists	PW
Family Vision Care Assoc PC	74 Welwood Ave # 102	Hawley	Optometrists OD	PW
Gordon, Joanne	100 Beechwood Ln	Greentown	Dietitians	PW
Hegge, Aubrey Dpt	103 Spruce St # 101	Hawley	Physical Therapists	PW
Horizon Dental Cares	2537 Route 6	Hawley	Dentists	PW
Inner Spirit Designs	3328 Hemlock Farms	Lords Valley	Healing Arts	PW
John A Ridd Dentistry	219 Hudson St	Hawley	Dentists	PW
Klock, Brian E MD	191 Marina Way	Greentown	Physicians & Surgeons	PW
Kubrak, Jennifer M Pt	103 Spruce St # 101	Hawley	Physical Therapists	PW
Kurtzer, Y Barry MD	1623 Route 507	Greentown	Physicians & Surgeons	PW
Lake Region Urgent Care	103 Spruce St	Hawley	Physicians & Surgeons	PW
Lords Valley Dental Care	642 Route 739	Hawley	Dentists	PW
Lords Valley Village Pharm Inc	Route 739	Lords Valley	Pharmacies	PW
Martino, Megan D Dmd	750 Route 739 # D	Lords Valley	Dentists	PW
Mgm Greentown Medical Ctr	1623 Route 507	Greentown	Physicians Assistants	PW
No Limits Physical Therapy LLC	2591 Route 6 # 202	Hawley	Physical Therapists	PW
Pellicane, Joanne MD	750 Route 739 # C	Lords Valley	Physicians & Surgeons	PW
Perez-Marchese, Nidia DDS	2537 Route 6	Hawley	Dentists	PW
Peterson, Michael T DO	132 Manly Rd	Tafton	Physicians & Surgeons	PW
Phillips, Breanne M Pa	103 Spruce St # 201	Hawley	Physicians Assistants	PW
Pocono Chiropractic Clinic Inc	2591 Route 6 # 104	Hawley	Chiropractors DC	PW
Pokowicz, Stephen	846 Church St	Hawley	Chiropractors DC	PW
Rinehimer, James A DDS	2537 Route 6	Hawley	Dentists	PW
Siwawa, Portia C MD	605 Spring St	Hawley	Physicians & Surgeons	PW
Tigue Chiropractic	662 Route 739 # 2	Lords Valley	Chiropractors DC	PW
Tigue-Petroski, Lynnita M Dc	98 Forest Dr # 2	Lords Valley	Chiropractors DC	PW
Trusky, Christine	667 Route 739	Hawley	Pharmacists	PW
Walgreens Inside Rite Aid	667 Route 739	Hawley	Pharmacies	PW
Wayne Memorial Hospital	750 Route 739	Hawley	Dentists	PW
Weisenreider, John M MD	750 Route 739 # B	Hawley	Physicians & Surgeons	PW
Wilson, Deborah J Do	175 Pike County Blvd	Lords Valley	Physicians & Surgeons	PW
Womans Healthcare	750 Route 739	Lords Valley	Physicians & Surgeons	PW
Advanced Inpatient Medicine	600 Maple Ave # 4	Honesdale	Nurses-Practitioners	WC
Advanced Inpatient Medicine	601 Park St	Honesdale	Nurses-Practitioners	WC
Alexander, April	1839 Fair Ave	Honesdale	Nurses-Practitioners	WC
Alfred Alessi Dr	348 Egypt Rd	Honesdale	Physicians & Surgeons	WC
Anderson Oddo, Odile J	1860 Fair Ave # B	Honesdale	Nurses-Licensed-Anesthetist	WC
Aretakis, Harry J MD	601 Park St	Honesdale	Physicians & Surgeons	WC
Arnold, Jennifer L Pa	507 High St	Honesdale	Physicians Assistants	WC
Baras, Yosef C Pa	601 Park St	Honesdale	Physicians Assistants	WC
Bauer, John MD	601 Park St	Honesdale	Physicians & Surgeons	WC
Bennett, Paula R MD	1839 Fair Ave	Honesdale	Physicians & Surgeons	WC
Benson, Emily R NP	1860 Fair Ave # A	Honesdale	Nurses-Practitioners	WC
Berry, Kenneth M MD	601 Park St	Honesdale	Physicians & Surgeons	WC
Bertsche, Debra Ann Pa	1839 Fair Ave	Honesdale	Physicians Assistants	WC
Boldish David M DDS	1325 N Main St	Honesdale	Dentists	WC
Boyce, Natalie OD	626 Park St	Honesdale	Optometrists OD	WC
Branning Podiatry	310 Sunrise Ave	Honesdale	Podiatrists	WC
Branning Podiatry PC	310 Sunrise Ave # B	Honesdale	Podiatrists	WC
Brundage Waymart Pharmacy	238 Belmont St	Waymart	Pharmacies	WC
Bzwieleski, Francis MD	3373 Lake Ariel Hwy # 2	Honesdale	Optometrists OD	WC



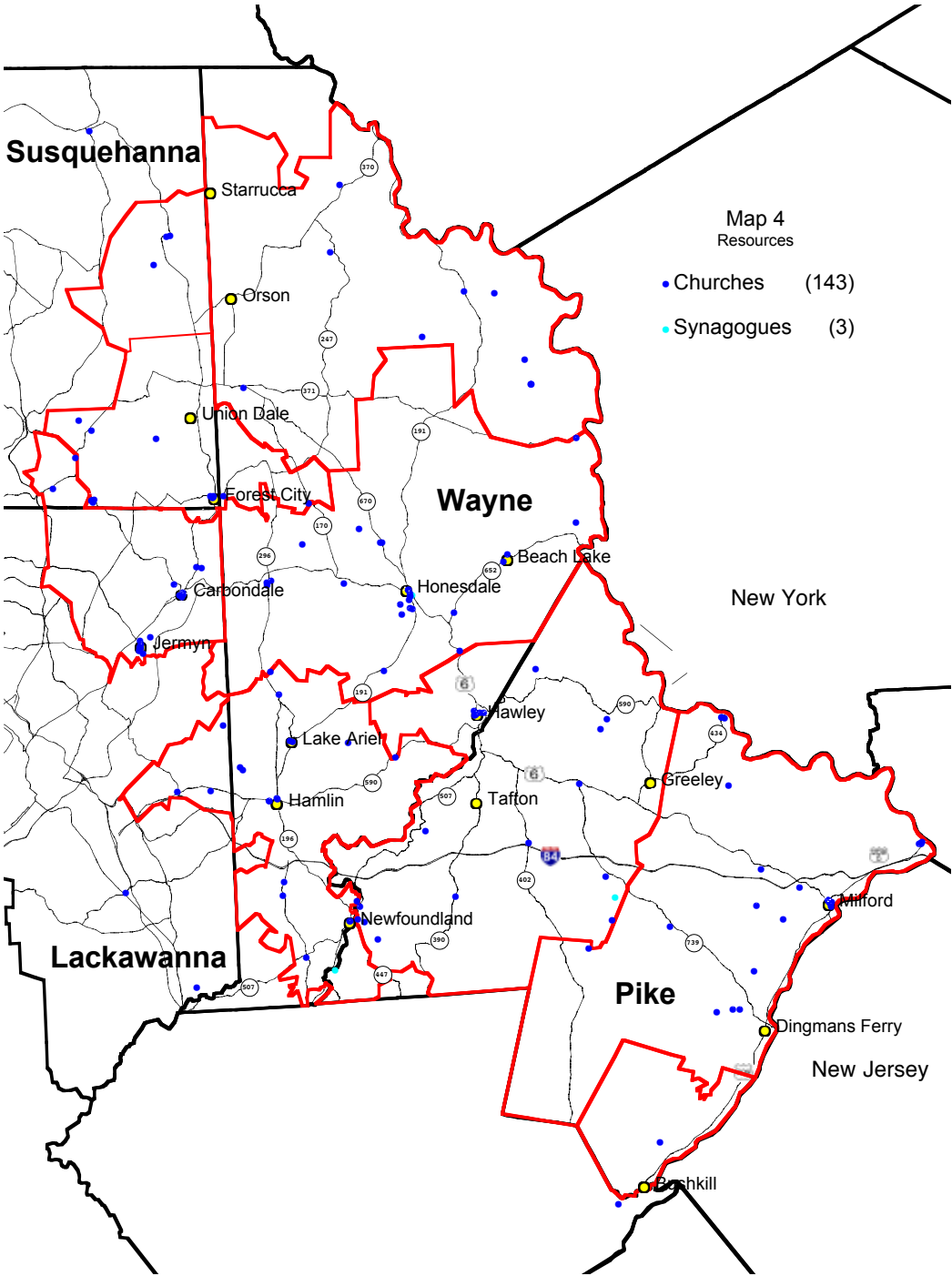
NAME	ADDRESS	CITY	Primary SIC Description	PWA Comm.
Campbell, Michael MD	600 Maple Ave # 6	Honesdale	Physicians & Surgeons	WC
Caucci, David MD	470 Sunrise Ave	Honesdale	Physicians & Surgeons	WC
Cheslick, Joseph J Np	100 Route 6	Waymart	Nurses-Practitioners	WC
Choi, Hyun S DDS	177 Sunrise Ave	Honesdale	Dentists	WC
Clauss, Patrick J MD	601 Park St	Honesdale	Physicians & Surgeons	WC
Collins, Robilyn A Np	601 Park St	Honesdale	Nurses-Practitioners	WC
Conklin, Debra A NP	1839 Fair Ave	Honesdale	Physicians Assistants	WC
Conserette, Arlene J Pa	600 Maple Ave # 3	Honesdale	Physicians Assistants	WC
Corso, Matthew P OD	3373 Lake Ariel Hwy # 2	Honesdale	Optometrists OD	WC
Cruse, James G MD	600 Maple Ave # 2	Honesdale	Physicians & Surgeons	WC
CVS/Pharmacy	202 4th St	Honesdale	Pharmacies	WC
CVS/Pharmacy	801 Main St	Honesdale	Pharmacies	WC
De Blon Family Chiropractic	231 Sunrise Ave	Honesdale	Chiropractors DC	WC
DE Luna, Carlo M MD	600 Maple Ave # 2	Honesdale	Physicians & Surgeons	WC
Demers, Carrie E MD	952 Bethany Tpke	Honesdale	Physicians & Surgeons	WC
Desorgher, Amy Cnm	110 Park St	Honesdale	Midwives	WC
Dewar, William R MD	1839 Fair Ave	Honesdale	Physicians & Surgeons	WC
Diamond, Paul M MD	1837 Fair Ave	Honesdale	Physicians & Surgeons	WC
D'Oro, Louis C MD	600 Maple Ave # 1	Honesdale	Physicians & Surgeons	WC
Downey, Matthew J MD	1860 Fair Ave # A	Honesdale	Physicians & Surgeons	WC
Dressel Jr, Christopher MD	29 Woodlands Dr	Waymart	Physicians & Surgeons	WC
Dunn, Kevin PT	232 Sunrise Ave Frnt	Honesdale	Physical Therapists	WC
Dziewieski, Francis OD	3319 Lake Ariel Hwy	Honesdale	Optometrists OD	WC
Edlind, Mary	37 Woodlands Dr	Waymart	Physical Therapists	WC
Edward L Murray Dpm	304 Willow Ave	Honesdale	Podiatrists	WC
Eisele, Janet B NP	27b Woodlands Dr	Waymart	Physicians & Surgeons	WC
Epstein, Scott K MD	600 Maple Ave # 3	Honesdale	Physicians & Surgeons	WC
Erbach, Kristin E DDS	112 10th St	Honesdale	Dentists	WC
Espino-Ostman, Zenaida L MD	601 Park St	Honesdale	Physicians & Surgeons	WC
Esterline, Kayla	1837 Fair Ave	Honesdale	Physicians Assistants	WC
Evarts, Jillian M PA	1860 Fair Ave # A	Honesdale	Physicians Assistants	WC
Family Eye Care Of Nepa	100 Park St	Honesdale	Optometrists OD	WC
Family Medical Ctr	263 Carbondale Rd	Waymart	Physicians & Surgeons	WC
First Choice Chiropractic	631 Roosevelt Hwy	Waymart	Chiropractors DC	WC
Fitzpatrick, W David MD	29 Woodlands Dr # 305	Waymart	Physicians & Surgeons	WC
Fragin, Gerald OD	738 Main St	Honesdale	Optometrists OD	WC
Galanakis, Stylianos J MD	29 Woodlands Dr	Waymart	Physicians & Surgeons	WC
Gillern, Jacqueline	11 Farview Rd	Waymart	Nurses-Practitioners	WC
Gillow, Christina M OD	314 Honesdale Rd	Waymart	Optometrists OD	WC
Goldberg, Benjamin W	1046 Cochection Tpke	Tyler Hill	Physical Therapists	WC
Gonzalez, Lee NP	1837 Fair Ave	Honesdale	Nurses-Practitioners	WC
Great Valley Cardiology	677 Roosevelt Hwy	Waymart	Physicians & Surgeons	WC
Grossman, Amy C Pt	1130 Texas Palmyra Hwy	Honesdale	Physical Therapists	WC
Gruber Barzilo, Jean Marie	840 Main St	Honesdale	Dietitians	WC
Gupta, Tuhin MD	600 Maple Ave	Honesdale	Physicians & Surgeons	WC
Haley, Matthew C MD	263 Carbondale Rd	Waymart	Physicians & Surgeons	WC
Hartland, Rosalind I Dmd	196 Eric J Williams Mem	Waymart	Dentists	WC
Heller, Judith A Np	3306 Lake Ariel Hwy	Honesdale	Nurses-Practitioners	WC
Hellstern, Meredith L MD	1837 Fair Ave	Honesdale	Physicians & Surgeons	WC
Hemak, Heidi PA	1860 Fair Ave # A	Honesdale	Physicians Assistants	WC
Henderson, Donald W MD	3306 Lake Ariel Hwy	Honesdale	Physicians & Surgeons	WC
Higher Systems Diagnostics	650 Park St	Honesdale	Audiologists	WC
Highland Physicians Family	1839 Fair Ave	Honesdale	Nurses-Practitioners	WC
Hlavac, Phillip J MD	600 Maple Ave # 2	Honesdale	Physicians & Surgeons	WC

NAME	ADDRESS	CITY	Primary SIC Description	PWA Comm.
Honesdale Chiropractic	200 Delaware St	Honesdale	Chiropractors DC	WC
Honesdale Eye Ctr	738 Main St	Honesdale	Optometrists OD	WC
Honesdale Family & Implant	1325 N Main St	Honesdale	Dentists	WC
Honesdale Oral Surgery	1095 Texas Palmyra Hwy	Honesdale	Dentists	WC
Honesdale Orthopedic Surgery	470 Sunrise Ave	Honesdale	Physicians & Surgeons	WC
Horizon Dental Care	3025 Lake Ariel Hwy	Honesdale	Dentists	WC
Howells Medicine Ctr	600 Maple Ave # 9	Honesdale	Pharmacies	WC
Hubbard, John W OD	626 Park St	Honesdale	Optometrists OD	WC
Jordan, Christopher MD	626 Park St	Honesdale	Physicians & Surgeons	WC
Kaiser, Leah Dpt	232 Sunrise Ave	Honesdale	Physical Therapists	WC
Kaniefski, Walter J MD	601 Park St	Honesdale	Physicians & Surgeons	WC
Kant, Adrien Jean MD	1110 Court St	Honesdale	Physicians & Surgeons	WC
Kasper, Gerald J Dmd	11 Farview Rd	Waymart	Dentists	WC
Kohrt, Alan E MD	1837 Fair Ave	Honesdale	Physicians & Surgeons	WC
Kovaleski, Zachary	37 Woodlands Dr	Waymart	Physical Therapists	WC
Krempasky, Kate E Pa	601 Park St	Honesdale	Physicians Assistants	WC
Kutch, James D MD	1860 Fair Ave # A	Honesdale	Physicians & Surgeons	WC
Langroudi, Mehran MD	110 Park St	Honesdale	Physicians & Surgeons	WC
Lavin, Susan	1101 Main St	Honesdale	Pharmacists	WC
Lena, Joseph E MD	1860 Fair Ave	Honesdale	Physicians & Surgeons	WC
Lenczewski, Brian MD	600 Maple Ave # 1	Honesdale	Physicians & Surgeons	WC
Lin, Sithu MD	601 Park St	Honesdale	Physicians & Surgeons	WC
Liu, Phillip MD	650 Park St	Honesdale	Physicians & Surgeons	WC
Liu, Rosita O MD	650 Park St # 1	Honesdale	Physicians & Surgeons	WC
Loizeaux, Harriet S	601 Park St	Honesdale	Nurses-Practitioners	WC
Maddowell, Christina Np	110 Park St	Honesdale	Nurses-Practitioners	WC
Marcus, Basya MD	1837 Fair Ave	Honesdale	Physicians & Surgeons	WC
Matthew T Kuber MD Facc	310 Sunrise Ave # A	Honesdale	Physicians & Surgeons	WC
Mc Veigh, Sean MD	600 Maple Ave # 4	Honesdale	Physicians & Surgeons	WC
Mekilo, Ann M PA	1831 Fair Ave	Honesdale	Physicians Assistants	WC
Milks, Carl H MD	1837 Fair Ave	Honesdale	Physicians & Surgeons	WC
Milks, Carl J MD	17 Beech Grove Rd	Honesdale	Physicians & Surgeons	WC
Miller, Gwen E	1837 Fair Ave	Honesdale	Physicians Assistants	WC
Minerva Educational-Wellness	52 Deer Ln	Honesdale	Holistic Practitioners	WC
Mogerman Jeffrey A MD	601 Park St	Honesdale	Physicians & Surgeons	WC
Mogerman Orthopedic Institute	27a Woodlands Dr	Waymart	Physicians & Surgeons	WC
Mogerman, Jeffrey MD	27b Woodlands Dr	Waymart	Physicians & Surgeons	WC
Morton, Robert J MD	1837 Fair Ave	Honesdale	Physicians & Surgeons	WC
Morton, Robert J MD	27b Woodlands Dr	Waymart	Physicians & Surgeons	WC
Motion Physical Therapy	232 Sunrise Ave	Honesdale	Physical Therapists	WC
Mowatt, Susan L MD	3057 Eric J Williams Mer	Waymart	Physicians & Surgeons	WC
Murray's Physical Therapy Inc	1130 Texas Palmyra Hwy	Honesdale	Physical Therapists	WC
Musial, Freda Np	601 Park St	Honesdale	Nurses-Practitioners	WC
Nacinovich, Marissa S DMD	1214 Texas Palmyra Hwy	Honesdale	Dentists	WC
Nebzydowski, Emily MD	1839 Fair Ave	Honesdale	Physicians & Surgeons	WC
Northeastern Eye Institute	626 Park St	Honesdale	Optometrists OD	WC
Northeastern Gastroenterology	1860 Fair Ave # A	Honesdale	Physicians & Surgeons	WC
Oboyle, Julianne MD	601 Park St	Honesdale	Physicians & Surgeons	WC
O'Brien, Thomas M MD	110 Park St	Honesdale	Physicians & Surgeons	WC
Optimum Health Family Chiro	1095 Texas Palmyra Hwy	Honesdale	Chiropractic Doctor Info Bureaus	WC
Osborne, Thomas John	1101 Main St	Honesdale	Pharmacists	WC
Pandit, Ramesh S MD	601 Park St	Honesdale	Physicians & Surgeons	WC
Pandit, Trupti R MD	600 Maple Ave	Honesdale	Physicians & Surgeons	WC

NAME	ADDRESS	CITY	Primary SIC Description	PWA Comm.
Pediatric Practice	1870 Fair Ave	Honesdale	Physicians & Surgeons	WC
Pediatric Practices	1837 Fair Ave	Honesdale	Physicians & Surgeons	WC
Pediatric Practices Of Ne Pa	27 Woodlands Dr # B	Waymart	Physicians & Surgeons	WC
Pek, Monika R MD	600 Maple Ave # 2	Honesdale	Physicians & Surgeons	WC
Pellicane, Joanne F MD	110 Park St	Honesdale	Physicians & Surgeons	WC
Penwarden, Linda MD	1837 Fair Ave	Honesdale	Physicians & Surgeons	WC
Philip C Gutherz MD	600 Maple Ave # 13	Honesdale	Physicians & Surgeons	WC
Phillips, Kenneth A OD	314 Honesdale Rd	Waymart	Optometrists OD	WC
Prime Medical	3306 Lake Ariel Hwy	Honesdale	Physicians & Surgeons	WC
Quinn Mariotti & Abod	3306 Lake Ariel Hwy	Honesdale	Dentists	WC
Reynolds, David D MD	1860 Fair Ave # A	Honesdale	Physicians & Surgeons	WC
Rickard, Alana C DO	1837 Fair Ave	Honesdale	Physicians & Surgeons	WC
Rite Aid	1184 Texas Palmyra Hwy	Honesdale	Pharmacies	WC
Rivardo, Rebecca A Pa	1860 Fair Ave # A	Honesdale	Physicians Assistants	WC
Rivardo, Rebecca A PA	601 Park St	Honesdale	Physicians Assistants	WC
Rogers, Michael C DDS	3373 Lake Ariel Hwy # 1	Honesdale	Dentists	WC
Salak, Cathy Marie Dmd	615 Roosevelt Hwy	Waymart	Dentists	WC
Sanderson Dental	112 10th St	Honesdale	Dentists	WC
Sauer, Maegan OD	160 Grandview Ave	Honesdale	Optometrists OD	WC
Sholi, Abdalla M MD	601 Park St	Honesdale	Physicians & Surgeons	WC
Smiles By Design	3373 Lake Ariel Hwy # 1	Honesdale	Dentists	WC
Smith, Todd R MD	601 Park St	Honesdale	Physicians & Surgeons	WC
Speicher, William J MD	601 Park St	Honesdale	Physicians & Surgeons	WC
Sprout Dental	177 Sunrise Ave	Honesdale	Dentists	WC
Stanton, Judy NP	1839 Fair Ave	Honesdale	Nurses-Practitioners	WC
Stephens Pharmacy	1101 Main St	Honesdale	Pharmacies	WC
Stopper, Matthew MD	29 Woodlands Dr	Waymart	Physicians & Surgeons	WC
Sullivan, Jamie Np	600 Maple Ave # 15	Honesdale	Nurses-Practitioners	WC
Surgical Office Of Honesdale	601 Park St	Honesdale	Physicians & Surgeons	WC
Together For Health Dental	600 Maple Ave # 7	Honesdale	Dentists	WC
Tomaine, Susan Marie Np	1839 Fair Ave	Honesdale	Nurses-Practitioners	WC
Tri-County Ent	650 Park St	Honesdale	Physicians & Surgeons	WC
Viator, Paul A Dmd	196 Eric J Williams Mem	Waymart	Dentists	WC
Walmart Pharmacy	723a Old Willow Ave	Honesdale	Pharmacies	WC
Walsh, Megan OD	590 Hamlin Plz	Honesdale	Optometrists OD	WC
Warningner, Bruce	631 Belmont Tpke	Waymart	Chiropractors DC	WC
Waymart Medical Ctr	27-B Woodlands Dr	Waymart	Physicians & Surgeons	WC
Wayne County Memorial Hospital	RR 6	Honesdale	Physical Therapists	WC
Wayne Memorial Audiology	909 Main St # 2	Honesdale	Audiologists	WC
Wayne Memorial Cmnty Health	600 Maple Ave # 11	Honesdale	Physicians & Surgeons	WC
Weidner-Clark, Jennifer L Pa	1839 Fair Ave	Honesdale	Physicians Assistants	WC
Wellspring Homeopathic Pharm	952 Bethany Tpke	Honesdale	Pharmacies	WC
Women's Health Care	110 Park St	Honesdale	Physicians & Surgeons	WC
Woodruff, Bonnie M	100 Route 6	Waymart	Nurses-Practitioners	WC
Xie, Xiaping MD	PO Box 256	Waymart	Physicians & Surgeons	WC
Yoo, Hoon MD	110 Park St	Honesdale	Physicians & Surgeons	WC
Zaccheo, Vito James	23 Ellen Memorial Ln	Honesdale	Nurses-Practitioners	WC
Zefran Dental Group	1214 Texas Palmyra Hwy	Honesdale	Dentists	WC
Zielinski, Jason J DO	601 Park St	Honesdale	Physicians & Surgeons	WC
Damascus Dental Ctr	1731 Cochection Tpke	Damascus	Dentists	WN
Dury, Tatyana	17 Zig Zag Ln	Damascus	Nurses-Practitioners	WN
Family Chiropractic Ctr	18 Como Rd	Lakewood	Chiropractors DC	WN
Haray, Robert J DDS	1731 Cochection Tpke	Damascus	Dentists	WN
Kannebecker, Ise MD	412 Como Rd	Lake Como	Physicians & Surgeons	WN

NAME	ADDRESS	CITY	Primary SIC Description	PWA Comm.
Northern Wayne Family	412 Como Rd	Lake Como	Physicians & Surgeons	WN
Bowers, Derek Jay MD	543 Easton Tpke # 105	Lake Ariel	Physicians & Surgeons	WS
Carton, James T DC	784 Purdytown Tpke	Lakeville	Chiropractors DC	WS
Cimerol, Sabrina N Dmd	358 Hamlin Highway #2	Hamlin	Dentists	WS
CVS/Pharmacy	657 Hamlin Hwy	Hamlin	Pharmacies	WS
CVS/Pharmacy	RR 191	Hamlin	Pharmacies	WS
Hamlin Chiropractic Ctr PC	590 State Route	Hamlin	Chiropractors DC	WS
Hamlin Dental Ctr	555 Easton Tpke	Hamlin	Dentists	WS
Hamlin Podiatry Ctr	PO Box 549	Hamlin	Podiatrists	WS
Hamlin Podiatry Ctr	RR 590	Hamlin	Podiatrists	WS
Health Is On The Way	569 Easton Tpke	Hamlin	Holistic Practitioners	WS
Henwood, Martha	PO Box 850	Hamlin	Pharmacists	WS
Horizon Medical	358 Hamlin Hwy	Hamlin	Physicians & Surgeons	WS
Horizon Medical Corp	358 Hamlin Highway	Hamlin	Nurses-Practitioners	WS
Hubbard, John W OD	569 Hamlin Hwy	Lake Ariel	Optometrists OD	WS
Hypnosis For A Better You	1434 Mount Cobb Rd	Jefferson Townshi	Hypnotists	WS
Kopesky, Gary A DMD	Rt 191	Hamlin	Dentists	WS
Kovalchick, Charles J Do	543 Easton Tpke # 105	Lake Ariel	Physicians & Surgeons	WS
Lafranco, Theresa A MD	62 Industrial Park Rd	Lake Ariel	Physicians & Surgeons	WS
Manassy, Norina A PA	543 Easton Tpke # 105	Lake Ariel	Physicians Assistants	WS
Mark & Patrick Murnin	358 Hamlin Hwy	Hamlin	Physicians & Surgeons	WS
Maurer, Martha K Np	50 Industrial Park Rd	Lake Ariel	Nurses-Practitioners	WS
Mccausland, Drew MD	69 W Lake Rd	Lake Ariel	Physicians & Surgeons	WS
Mt Cobb Medical Ctr	1434 Mount Cobb Rd # 1	Jefferson Townshi	Physicians & Surgeons	WS
Muggeo, Joelle L Pa	104 Compass Way	Lake Ariel	Physicians Assistants	WS
Murnin, Patrick J MD	358 Hamlin Hwy	Hamlin	Physicians & Surgeons	WS
New Day Dental Care	15 Fruehan Drive	Hamlin	Dentists	WS
Northeastern Eye Institute	569 Hamlin Hwy	Hamlin	Optometrists OD	WS
Northeastern Eye Institute	852 State Route 590	Hamlin	Optometrists OD	WS
Pediatric Practices	62 Industrial Park Rd	Lake Ariel	Physicians & Surgeons	WS
Physical Therapy Assoc	501 Hamlin Hwy	Hamlin	Physical Therapists	WS
Physical Therapy Assoc	State Route 590	Hamlin	Physical Therapists	WS
Rite Aid	639 Hamlin Hwy	Lake Ariel	Pharmacies	WS
Russell, Hortense P Do	543 Easton Tpke # 105	Lake Ariel	Physicians & Surgeons	WS
Russo, Kelsey	2362 Tanglewood Lane	Lake Ariel	Physical Therapists	WS
Saleem, Mohammad A MD	543 Hamlin Highway	Hamlin	Physicians & Surgeons	WS
Scrimalli Ratchford-Ahmadzadeh	358 Hamlin Hwy # 2	Lake Ariel	Dentists	WS
Siracuse, Carlene OD	569 Hamlin Hwy # C	Lake Ariel	Optometrists OD	WS
Stephen A Pokowicz Dc	543 Easton Tpke # 105	Lake Ariel	Chiropractors DC	WS
Story Family Chiropractic Ctr	1067 Main St	Newfoundland	Chiropractors DC	WS
Story, Richard J Dc	1067 Main St	Newfoundland	Chiropractors DC	WS
Tickner, James OD	1315 Lake Ariel Hwy	Lake Ariel	Optometrists OD	WS
Vital Link Chiropractic	1434 Mount Cobb Rd # 1	Jefferson Townshi	Chiropractors DC	WS
WEIS Markets Pharmacy	RR 590	Hamlin	Pharmacies	WS
Williams, Lori A MD	543 Easton Tpke # 105	Lake Ariel	Physicians & Surgeons	WS
Wood, David A Do	543 Easton Tpke # 105	Lake Ariel	Physicians & Surgeons	WS
Yoo, Hoon MD	543 Easton Tpke # 105	Lake Ariel	Physicians & Surgeons	WS

### Map 4 – Religious Resources



NAME	ADDRESS	CITY	Primary SIC Description	PWA Comm.
Berean Baptist Church	33 Lincoln Ave	Carbondale	Churches	CA
Calvary Bible Church Of Jermyn	518 Madison Ave	Jermyn	Churches	CA
Clifford Baptist Church	519 Church St	Clifford	Churches	CA
Clifford United Methodist Chr		Clifford	Churches	CA
Clifford United Methodist Chr	34 Main State Route 106	Clifford	Churches	CA
Covenant Reformed Church	47 S Church St	Carbondale	Churches	CA
Evangelical Wesleyan Church	Lake Idlewild	Clifford	Churches	CA
Finch Hill Baptist Church	RR 106	Greenfield Townsh	Churches	CA
First Presbyterian Church	76 Salem Ave	Carbondale	Churches	CA
First United Mthdst Chr-Crbndl	20 N Church St	Carbondale	Churches	CA
First United Mthdst Chr-Jermyn	516 Washington Ave	Jermyn	Churches	CA
Jehovah's Witnesses Kingdom	Ridge Rd	Carbondale	Churches	CA
Lenoxville United Mthdst Chr	4820 State Route 374	Lenoxville	Churches	CA
Mainstream Revival Ctr	43 N Church St # 1	Carbondale	Churches	CA
North Valley Baptist Church	1300 Old Plank Rd # 1	Jermyn	Religious Organizations	CA
Our Lady Of Mt Carmel Parish	6 N Church St	Carbondale	Church Organizations	CA
Primitive Methodist Chr Prsng	207 Whitmore Ave	Mayfield	Clergy	CA
Primitive Methodist Church	763 Jefferson Ave	Jermyn	Churches	CA
Sacred Heart Of Mary Rectory	624 Madison Ave	Jermyn	Clergy	CA
Sacred Hearts-Jesus-Mary Prsh	624 Madison Ave	Jermyn	Churches	CA
Saints James-George Episcopal	398 Washington Ave	Jermyn	Churches	CA
Sisters Of IHM	24 Park St	Carbondale	Religious Organizations	CA
St Basil's Oca Inc	9 Lord Ave	Simpson	Churches	CA
St Basil's Russian Orthodox	33 Midland St	Carbondale	Churches	CA
St John Vianney Parish	Route 106	Clifford	Churches	CA
St John's Russian Orthodox	700 Hill St	Mayfield	Churches	CA
St Joseph's Hosp Convent	92 Lincoln Ave	Carbondale	Religious Organizations	CA
St Michael Church	6 N Church St	Carbondale	Churches	CA
St Michaels Russian Orthodox	305 Walnut St	Jermyn	Churches	CA
St Rose Of Lima Parish	6 N Church St	Carbondale	Clergy	CA
Tree Of Life Sanctuary	PO Box 222	Clifford	Churches	CA
Trinity Episcopal Church	58 River St	Carbondale	Churches	CA
Ascension Parish	12 Hudson St	Forest City	Churches	FC
Bethel Community Church	248 Welsh Hill Rd	Clifford Township	Churches	FC
Christ Episcopal Church	700 Delaware St	Forest City	Churches	FC
Cornerstone Bible Church	520 Marion St	Browndale	Churches	FC
Elkdale Baptist Chr-West	45 State Route 2014	Clifford Township	Churches	FC
Evangelical Wesleyan Church	875 State Route 2067	Clifford Township	Churches	FC
Evangelical Wesleyan Church	RR 1	Union Dale	Churches	FC
Heritage Reformed Church	136 Grand Ave	Forest City	Churches	FC
St Joseph Parish	741 Delaware St	Forest City	Churches	FC
St Katharine Drexel Parish	612 Hudson St	Forest City	Churches	FC
Starrucca Baptist Church	PO Box 42	Thompson	Churches	FC
Thompson Baptist Church	209 Jackson St	Thompson	Churches	FC
Thompson United Methodist Chr	586 Main Street	Thompson	Churches	FC
United Methodist Church	Main St & Jackson St	Thompson	Churches	FC
Calvary Chapel Of Milford	10 Buist Rd # 501	Milford	Churches	PE
Centerpoint Community Chr Inc	123 Pine Dr	Shohola	Churches	PE
Centerpoint Community Church	PO Box 1566	Milford	Churches	PE
Church Of The Good Shepherd	321 5th St	Milford	Churches	PE
Dingmans Ferry United Mthdst	115 Myck Rd	Dingmans Ferry	Churches	PE
Emmanuel Lutheran Church	404 E Harford St # 2	Milford	Churches	PE
First Presbyterian Church	308 Broad St	Milford	Churches	PE
Good Shepherd & St John's Chr	5th & W Catherine St	Milford	Churches	PE



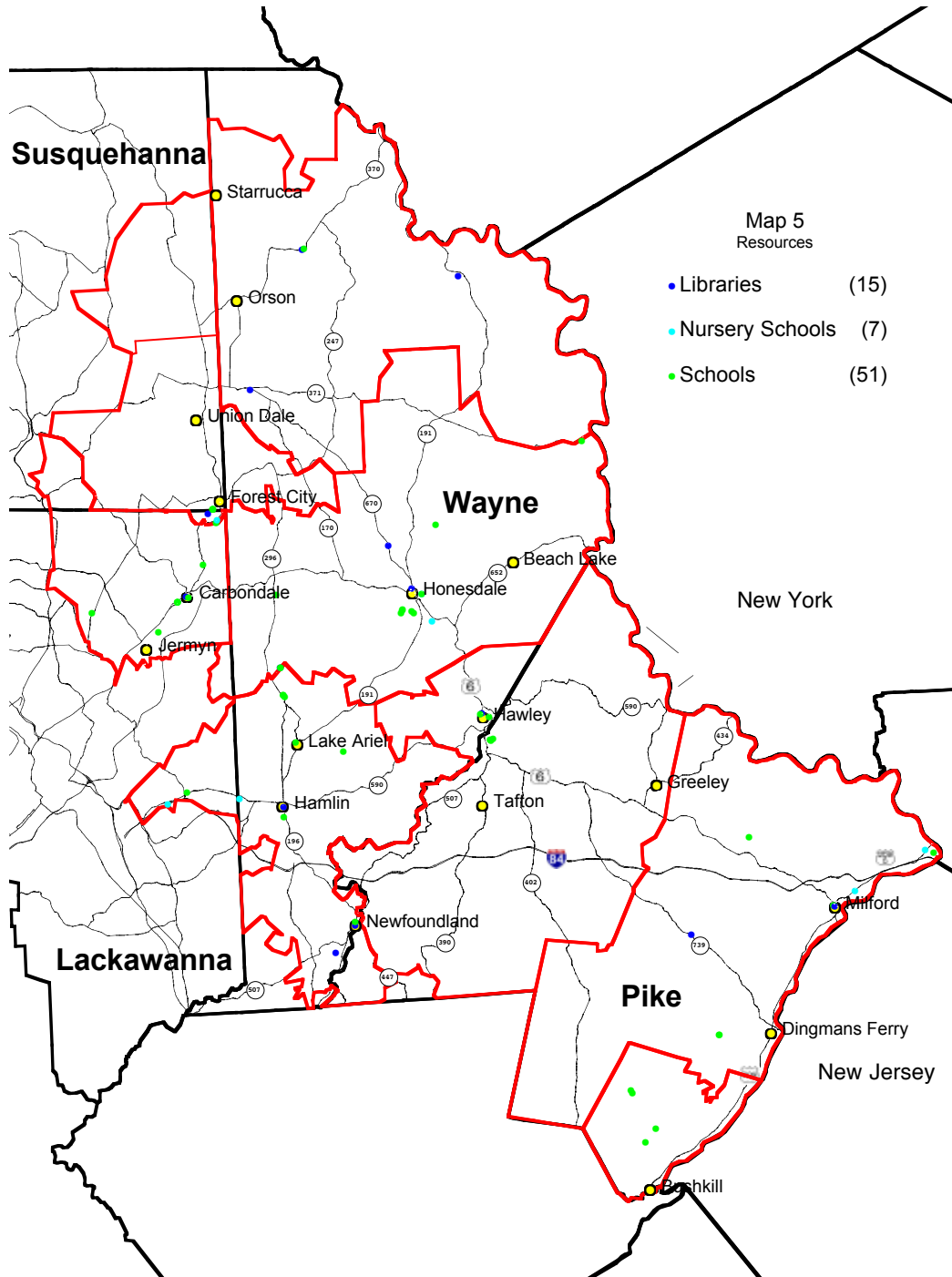
NAME	ADDRESS	CITY	Primary SIC Description	PWA Comm.
Good Shepherd-St John's	321 5th St	Milford	Churches	PE
Holy Trinity Lutheran Church	103 Delaware Crest Dr	Dingmans Ferry	Churches	PE
Hope Evangelical Free Church	300 1st St	Matamoras	Churches	PE
Jehovah's Witnesses Of Milford	110 Pinebrook Rd	Milford	Churches	PE
Long Meadow Chapel	429 Long Meadow Rd	Milford	Churches	PE
Milford Bible Church	110 Foxcroft Dr	Milford	Churches	PE
Milford United Methodist Chr	206 E Ann St	Milford	Churches	PE
New Life Christian Fellowship	205 Avenue G	Matamoras	Churches	PE
Praise & Mercy Fellowship	220 Silver Lake Rd	Dingmans Ferry	Churches	PE
St Ann Church	125 Richardson Ave	Shohola	Churches	PE
St Ann's Parish	125 Richardson Ave	Shohola	Churches	PE
St Jacobi Lutheran Church	108 Glen Dr	Shohola	Churches	PE
St Joseph Parish	309 Avenue F	Matamoras	Churches	PE
St Joseph's Rectory	307 Avenue F	Matamoras	Church Organizations	PE
St Patricks Church	111 E High St	Milford	Churches	PE
St Vincent De Paul Catholic	101 Saint Vincent Dr	Milford	Churches	PE
United Methodist Chr-Matamoras	209 Avenue H	Matamoras	Churches	PE
Faith International Church	2008 Sandhill Dr	Bushkill	Churches	PS
Joshua & Caleb Ministry	1740 Pine Rdg	Bushkill	Churches	PS
Mont Lawn	5190 Wickes Rd	Bushkill	Retreat Houses	PS
Bau-Madsen		Paupack	Clergy	PW
Bethel Lutheran Chr Parsonage	PO Box 193	Rowland	Clergy	PW
Bethel Lutheran Church	193 Church Rd	Rowland	Churches	PW
Bethel Lutheran Church Pa	PO Box 193	Rowland	Churches	PW
Bible Fellowship Church	101 Blue Heron Dr	Greentown	Churches	PW
Blessed Virgin Mary Queen	314 Chestnut Ave	Hawley	Churches	PW
Blooming Grove Baptist Church	550 Route 402	Hawley	Churches	PW
Church At Hemlock Farms	1493 Hemlock Farms	Lords Valley	Churches	PW
Faith Christian Outreach Ctr	104 Red Shale Rd	Hawley	Ministries-Out Reach	PW
Faith Community Church Of Love	216 Canoebrook Dr	Lords Valley	Churches	PW
Faith Love Community Church	105 Water View Dr	Hawley	Churches	PW
First Assembly Of God	1606 Route 507	Greentown	Churches	PW
First Baptist Church Hawley	711 Church St	Hawley	Churches	PW
First Presbyterian Church	815 Church St	Hawley	Churches	PW
Hawley Methodist Church	315 Church St	Hawley	Churches	PW
Hemlock Grove United Mthdst	491 Roemerville Rd	Greentown	Churches	PW
Hemlock Grove United Mthdst	Roemerville Rd	Greentown	Churches	PW
Honesdale Free Methodist	17 Church St	Hawley	Churches	PW
Jewish Fellowship Of Hemlock	Forest Dr	Hawley	Synagogues Jewish	PW
Johnson, David M	108 Clover Ln	Greentown	Clergy	PW
Let There Be Light Ministry	106 God Sent Ct	Greentown	Religious Organizations	PW
Lords Valley Ctr For Spiritual	3283 Hemlock Farms	Hawley	Religious Organizations	PW
New Covenant Fellowship	32 Columbus Ave	Hawley	Churches	PW
New Life Christian Fellowship	Route 6	Lords Valley	Churches	PW
Promised Land Protestant Cmnty	Route 390	Greentown	Churches	PW
St John Neumann Parish	705 Route 739	Hawley	Churches	PW
St Paul's Lutheran Church	405 Church St	Hawley	Churches	PW
St Veronica Mission	Shiney Mountain Road &	Paupack	Churches	PW
Aldenville-Clinton Baptist Chr	971 Creek Dr	Prompton	Churches	WC
Assembly Of God	1112 Church St	Honesdale	Churches	WC
Basilian Fathers	139 Barkley Lake Rd	Beach Lake	Churches	WC
Beach Lake Free Methodist Chr	107 Milanville Rd	Beach Lake	Churches	WC
Beach Lake United Mthdst Chr	7 Milanville Rd	Beach Lake	Churches	WC
Bethany Presbyterian Church	431 Wayne St	Bethany	Churches	WC

NAME	ADDRESS	CITY	Primary SIC Description	PWA Comm.
Bethany United Methodist Chr	3 Court St	Bethany	Churches	WC
Central United Methodist Chr	205 11th St	Honesdale	Churches	WC
Christ Episcopal Church	Route 6	Honesdale	Churches	WC
Christadelphian Chapel	204 Water St	Honesdale	Churches	WC
Church Of Jesus Christ Of LDS	710 Beechrock Rd	Honesdale	Churches	WC
Clinton Center Baptist Church	RR 1	Waymart	Churches	WC
First Baptist Church	206 12th St	Honesdale	Churches	WC
First Baptist Church	342 Honesdale Rd	Waymart	Churches	WC
First Presbyterian Preschool	761 Terrace St	Honesdale	Religious Schools	WC
Grace Episcopal Church	827 Church St	Honesdale	Churches	WC
Honesdale Congregaton	2756 Lake Ariel Hwy	Honesdale	Churches	WC
Living Word Church	3 Navajo Rd	Honesdale	Churches	WC
Lost & Found Bible Church	616 Main St # 203	Honesdale	Churches	WC
New Hope Chr-Ministries Prsng	349 Buckingham Rd	Honesdale	Parsonages	WC
Presbyterian Church	761 Terrace St	Honesdale	Churches	WC
Prompton Community United	156 Church St	Prompton	Churches	WC
Salvation Army	398 South St	Waymart	Retreat Houses	WC
St John The Evangelist Parish	150 Terrace St	Honesdale	Churches	WC
St John's Evangelical	107 7th St	Honesdale	Churches	WC
St Marys Church Waymart	242 Carbondale Rd	Waymart	Churches	WC
Tabernacle Bible Church	455 Grove St	Honesdale	Churches	WC
Temple Beth Israel	615 Court St	Honesdale	Synagogues	WC
United Methodist Church	151 Belmont St	Waymart	Churches	WC
Wayne-Pk Child Evan Fellowship	461 Grove St	Honesdale	Missions	WC
Abrahamsville United Mthdst	623 Callicoon Rd	Damascus	Churches	WN
Braman United Methodist Church	Braman Rd	Equinunk	Churches	WN
Buckingham Baptist Church		Starlight	Churches	WN
Damascus Manor U M Church	RR 371	Damascus	Churches	WN
Damascus Manor United Mthdst	1720 Cochection Tpke	Damascus	Churches	WN
First Baptist Chr Of Damascus	Route 13	Damascus	Churches	WN
Lake Como-Shehawken United	377 Como Rd	Lake Como	Churches	WN
Methodist Parsonage	373 Como Rd	Lake Como	Clergy	WN
Pine Mill United Methodist Chr	Pine Mill Rd & Hathaway	Equinunk	Churches	WN
St James Church	361 Great Bend Tpke	Pleasant Mount	Churches	WN
Union United Methodist Church	Hancock Hwy & Stalker R	Equinunk	Churches	WN
United Methodist Church	RR 1	Damascus	Churches	WN
Assembly Of God Church	Route 507	Newfoundland	Churches	WS
Avoy Christian Church	1060 Lake Henry Rd	Lake Ariel	Churches	WS
Canaan Bible Chapel Inc	30 Hemlock Rd	Lake Ariel	Churches	WS
Cortez United Methodist Church	967 Cortez Rd	Jefferson Townshi	Churches	WS
Elmdale Bible Church	1582 Mount Cobb Rd	Jefferson Townshi	Churches	WS
Free Methodist Church	19 Saint Tikhons Rd	South Canaan	Churches	WS
Grace United Methodist Church	1117 Lake Henry Rd	Lake Ariel	Churches	WS
Hamlin Assembly Of God	613 Easton Tpke	Lake Ariel	Churches	WS
Hamlin Pentecostal Assembly-Gd	612 Easton Tpke	Lake Ariel	Churches	WS
Hamlin Pentecostal Assembly-Gd	613 Easton Tpke	Lake Ariel	Religious Organizations	WS
Hazel Hurst United Mthdst Chr	81 S School St	Hamlin	Churches	WS
Jericho Independent Church	Rd 1	Newfoundland	Churches	WS
Jewish Reconstructionist	108 Rabbi Jeff Way	South Sterling	Synagogues	WS
Kingdom Hall-Jehovah's Witnss	2021 Moosic Lake Rd	Jefferson Townshi	Churches	WS
Lake Ariel United Mthdst Chr	110 Maple Ave	Lake Ariel	Churches	WS
Lakeville United Methodist Chr	431 Purdytown Tpke	Lakeville	Churches	WS
Missionary Retreat Fellowship	66 Missonary Retreat Rd	Lake Ariel	Religious Organizations	WS
Newfoundland Moravian Church	982 Main St	Newfoundland	Churches	WS



<b>NAME</b>	<b>ADDRESS</b>	<b>CITY</b>	<b>Primary SIC Description</b>	<b>PWA Comm.</b>
Quaker Meeting-North Branch	410 Sterling Rd	Newfoundland	Churches	WS
Salem Community Church		Lake Ariel	Churches	WS
Sanctuary Church	PO Box 557	Newfoundland	Churches	WS
St John's Episcopal Church	PO Box 118	Hamlin	Churches	WS
St Thomas More-St Mary Parish	105 Gravity Rd	Lake Ariel	Churches	WS
Sterling United Methodist Chr	567 Sterling Rd	Sterling	Churches	WS

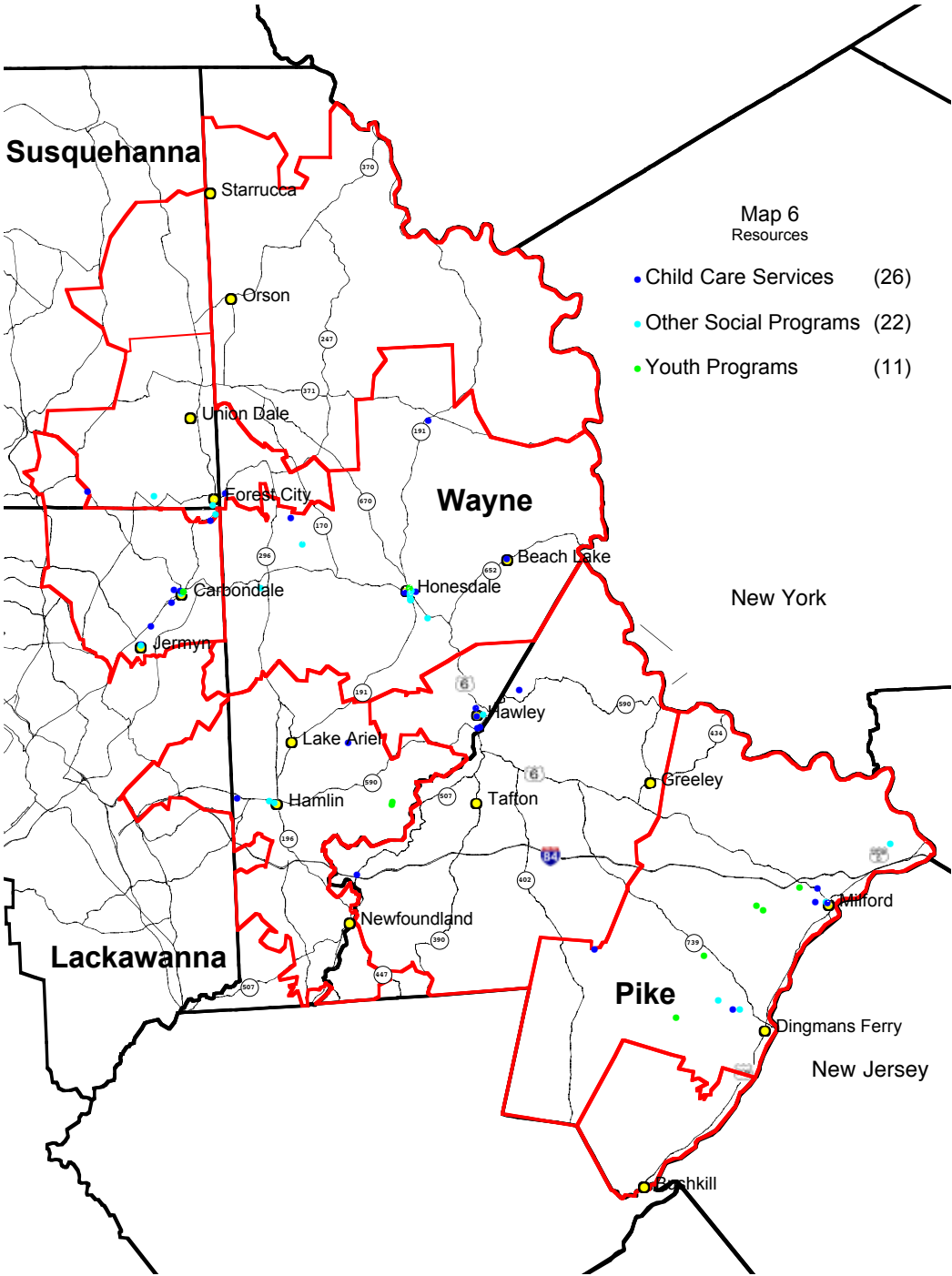
### Map 5 – Educational Resources



NAME	ADDRESS	CITY	Primary SIC Description	PWA Comm.
Carbondale Area High School	101 Brooklyn St	Carbondale	Schools	CA
Carbondale Area Jr Sr High	101 Brooklyn St	Carbondale	Schools	CA
Carbondale Board Of Education	101 Brooklyn St	Carbondale	Schools	CA
Carbondale Elementary School	101 Brooklyn St	Carbondale	Schools	CA
Carbondale Public Library	5 N Main St	Carbondale	Libraries-Public	CA
Fell Charter School	777 Main St	Carbondale	Schools	CA
J & N Holistic Wellness	49 Upper Powderly St	Carbondale	Wellness Programs	CA
Lakeland Junior-Senior High	1355 Lakeland Dr	Scott Township	Schools	CA
Lynnette's Twirlerettes	7 48th St	Carbondale	Baton Twirling Instruction	CA
Mayfield Elementary School	501 Linden St	Mayfield	Schools	CA
Soulshine Inner Wellness LLC	53 Salem Ave	Carbondale	Wellness Programs	CA
St Rose Annex	80 Terrace St	Carbondale	Schools	CA
Trans American Technical Inst	RR 1	Jermyn	Training Programs & Services	CA
Forest City High School	100 Susquehanna St	Forest City	Schools	FC
Forest City Library	531 Main St	Forest City	Libraries-Public	FC
Forest City Regional Sch Dist	100 Susquehanna St	Forest City	Schools	FC
Forest City Regl Elementary	100 Susquehanna St	Forest City	Schools	FC
Forest City School Supt	100 Susquehanna St	Forest City	Schools	FC
Jd Transportation Inc	342 Main St	Forest City	Schools	FC
Tumblin Tots	449 Hillside St	Forest City	Schools-Nursery & Kindergarten Academic	FC
Bushkill Elementary School	131 N School Dr	Dingmans Ferry	Schools	PE
Center For Developmental	101 Pocono Dr	Milford	Schools-Nursery & Kindergarten Academic	PE
Delaware Township Library Assn	RR 739	Dingmans Ferry	Libraries-Public	PE
Delaware Valley Elementary Sch	500 Avenue S	Matamoras	Schools	PE
Delaware Valley Elementary Sch	244 Route 6 And 209	Milford	Schools	PE
Delaware Valley High School	252 Route 6 And 209	Milford	Schools	PE
Delaware Valley Middle School	258 Route 6 And 209	Milford	Schools	PE
Devry Inc	126 Vista Ln	Milford	Schools & Educational Services NEC	PE
Dingman Township Branch	100 Bond Ct	Milford	Libraries-Public	PE
Dingman-De Primary School	1375 Route 739	Dingmans Ferry	Schools	PE
Dingman-Delaware Middle School	1365 Route 739	Dingmans Ferry	Schools	PE
Discover The Rainbow	610 Avenue H	Matamoras	Schools-Nursery & Kindergarten Academic	PE
East Stroudsburg Area Sch Dist	257 Timberwolf Dr	Dingmans Ferry	Schools	PE
East Stroudsburg High School	279 Timberwolf Dr	Dingmans Ferry	Schools	PE
East Stroudsburg School	151 N School Dr	Dingmans Ferry	Schools	PE
John Henderson Flight Training	134 Bayberry Dr	Dingmans Ferry	Aircraft Schools	PE
Milford School Of Music	441 Route 6 And 209	Milford	Music Instruction-Instrumental	PE
Pike Co Developmental Inc	107 W Ann St Frnt	Milford	Educational Service-Business	PE
Pike County Public Library	119 E Harford St	Milford	Libraries-Public	PE
Shohola Elementary School	940 Twin Lakes Rd	Shohola	Schools	PE
Colonial Northampton IU	Bushkill Falls Rd	Bushkill	Schools	PS
Independence Driving School		Bushkill	Driving Instruction	PS
Integral Corporate Process	1007 Lancaster Dr # 2	Bushkill	Educational Service-Business	PS
Lehman Intermediate School	257 Bushkill Falls Rd	Bushkill	Schools	PS
Hawley Center	500 Academy St	Hawley	Schools	PW

NAME	ADDRESS	CITY	Primary SIC Description	PWA Comm.
Hawley Public Library	103 Main Ave	Hawley	Libraries-Public	PW
Lackawanna College-Lake Region	8 Silk Mill Dr # 120	Hawley	Schools-Business & Secretarial	PW
North Primary School	158 Atlantic Ave	Hawley	Schools	PW
Rock School	1345 Route 507 # 104	Greentown	Music Instruction-Instrumental	PW
Treasure House Child Devmnt	17 Columbus Ave	Hawley	Schools	PW
Wallenpaupack Middle School	139 Atlantic Ave	Hawley	Schools	PW
Wallenpaupack North	187 Atlantic Ave	Hawley	Schools	PW
Adult Literacy-Wayne & Pike	1406 N Main St	Honesdale	Tutoring	WC
Bethany Public Library	8 Court St	Bethany	Libraries-Public	WC
Brookside School	491 Carley Brook Rd	Honesdale	Schools	WC
Central Wayne School	Lakeside Dr	Honesdale	Schools	WC
Honesdale High School	459 Terrace St	Honesdale	Schools	WC
Keystone Learning Ctr Inc	1504 East St	Honesdale	Education Centers	WC
Lakeside Elementary School	129 Lakeside Dr	Honesdale	Schools	WC
Martin John J	1022 Court St	Honesdale	Piano-Instructions	WC
Myrtis's Preschool Creative	523 Old Willow Ave	Honesdale	Schools-Nursery & Kindergarten Academic	WC
Phoenix Learning Resources	910 Church St # 1	Honesdale	Education Centers	WC
Robert D Wilson Elementary	74 Belmont St	Waymart	Schools	WC
SLHDA Head Start	329 Cliff St # 2	Honesdale	Schools-Nursery & Kindergarten Academic	WC
St Dominic Academy	329 Cliff St # 1	Honesdale	Schools	WC
St Patriarch Tikhon Library	178 Saint Tikhons Rd	Waymart	Special Interest Libraries	WC
St Tikhon's Seminary Admnstn	175 Saint Tikhons Rd	Waymart	Schools	WC
St Tikhon's Seminary Devmnt	175 Saint Tikhons Rd	Waymart	Schools	WC
Stone Works Learning Ctr	1036 Main St	Honesdale	Health Education	WC
Stourbridge Elementary School	123 Abc Dr	Honesdale	Schools	WC
TML Aircraft	Cherry Ridge Airport	Honesdale	Aircraft Schools	WC
Wayne County Public Library	1406 N Main St	Honesdale	Libraries-Public	WC
Wayne Highlands Special Educ	474 Grove St	Honesdale	Schools	WC
Damascus Elementary School	174 High School Rd	Damascus	Schools	WN
Manchester Community Library	3879 Hancock Hwy	Equinunk	Libraries-Public	WN
Northern Wayne Public Library	11 Library Rd	Lakewood	Libraries-Public	WN
Pleasant Mt Public Library	375 Great Bend Tpke	Pleasant Mount	Libraries-Public	WN
Preston School	1493 Crosstown Hwy	Lakewood	Schools	WN
Biblical Identity School	569 Easton Tpke # 2a	Lake Ariel	Schools	WS
Bright Beginnings	1151 Mount Cobb Rd	Jefferson Townshi	Schools-Nursery & Kindergarten Academic	WS
Canaan Christian Academy	30 Hemlock Rd	Lake Ariel	Schools	WS
Cinema Arts Inc	207 Lincoln Green Ln	Newfoundland	Special Interest Libraries	WS
Jefferson Elementary School	825 Lions Rd	Jefferson Townshi	Schools	WS
Newfoundland Public Library	954 Main St	Newfoundland	Libraries-Public	WS
Salem Public Library	562 Easton Tpke	Hamlin	Libraries-Public	WS
Scottie Swingle School Buses	462 Avoy Rd	Lake Ariel	Schools	WS
South Elementary School	989 Main St	Newfoundland	Schools	WS
Ventures In Learning	17 Moore Rd	Lake Ariel	Schools-Nursery & Kindergarten Academic	WS
Western Wayne High School	1970 Easton Tpke # A	Lake Ariel	Schools	WS
Western Wayne Middle School	111 Gravity Rd	Lake Ariel	Schools	WS
Western Wayne Middle School	1970 Easton Tpke # B	Lake Ariel	Schools	WS

### Map 6 – Community Resources



NAME	ADDRESS	CITY	Primary SIC Description	PWA Comm.
Allied Services	41 1/2 Pear St	Carbondale	Group Homes	CA
Bearhouse Day Care Ctr	50 Dundaff St	Carbondale	Child Care Service	CA
Bella Bambinis	27 S Washington Ave	Jermyn	Day Care Centers-Adult	CA
Carbondale Senior Ctr	66 N Church St	Carbondale	Senior Citizens Service Organizations	CA
Daydreamers Child Care	119 Cemetary Rd	Clifford	Child Care Service	CA
Edison Early Learning Ctr	227 Pike St	Carbondale	Child Care Service	CA
Greater Carbondale Ymca	82 N Main St	Carbondale	Youth Organizations & Centers	CA
Lenoxville Senior Citizen Ctr	RR 374	Lenoxville	Senior Citizens Service Organizations	CA
Lincoln View Manor LLC	10 Harrison Ave	Carbondale	Retirement Communities & Homes	CA
Millennium Child Day Care Ctr	626 Madison Ave	Jermyn	Child Care Service	CA
N H S Human Svc	34 N Main St	Carbondale	Social Service & Welfare Organizations	CA
Nhs	185 Fallbrook St	Carbondale	Human Services Organizations	CA
NHS		Jermyn	Social Service & Welfare Organizations	CA
Noble Environmental Svc	105 Healey Hill Rd	Greenfield Townsh	Environmental Conservation/Ecologcl Org	CA
Step By Step Inc	131 S Church St	Carbondale	Support Groups	CA
Through Our Eyes Child Devmnt	65 N Scott St	Carbondale	Child Care Service	CA
Tiny Treasurers Child Care Ctr	1104 Route 6 # B	Mayfield	Child Care Service	CA
YMCA	82 N Main St	Carbondale	Youth Organizations & Centers	CA
Human Resource Ctr	725 Main St	Forest City	Social Service & Welfare Organizations	FC
Human Resource Human	238 Delaware St	Forest City	Social Service & Welfare Organizations	FC
Patricia Titus Day Care Ctr	700 Marion St	Forest City	Child Care Service	FC
Salvation Army Forest City Svc		Forest City	Social Service & Welfare Organizations	FC
Tiny Treasure Child Care	636 1/2 Main St	Forest City	Child Care Service	FC
Camp Speers-Eljabar YMCA	143 Nichecronk Rd	Dingmans Ferry	Youth Organizations & Centers	PE
Community Rental Ctr Inc	PO Box 313	Matamoras	Social Service & Welfare Organizations	PE
Country Ark Farm	122 Genesis Dr	Milford	Human Services Organizations	PE
Delaware Football League	PO Box 385	Dingmans Ferry	Youth Organizations & Centers	PE
Delaware Valley Youth Sports	107 Cornelia Ln	Milford	Youth Organizations & Centers	PE
Good Shepherd Child Care Ctr	102 Route 2001	Milford	Child Care Service	PE
Habitat For Humanity	103 Delaware Crest Dr	Dingmans Ferry	Social Service & Welfare Organizations	PE
Habitat For Humanity	16 Silver Lake Road	Dingmans Ferry	Social Service & Welfare Organizations	PE
Little Acorns Daycare-Learning	220 Silver Lake Rd	Dingmans Ferry	Child Care Service	PE
Little Wonders Learning Ctr	104 Ritz Dr	Dingmans Ferry	Child Care Service	PE
Milford Hill Summer Camp	117 Milford Hill Ln	Milford	Child Care Service	PE

NAME	ADDRESS	CITY	Primary SIC Description	PWA Comm.
Pike Area Youth Athletic Leagu	PO Box 424	Milford	Youth Organizations & Centers	PE
Sunshine Station I	476 Route 6 And 209	Milford	Child Care Service	PE
United Way	201 W Harford St # 104	Milford	Social Service & Welfare Organizations	PE
Youth Advocate Programs	10 Buist Rd # 503	Milford	Youth Organizations & Centers	PE
Greentown Day Care Ctr	1401 Route 507 # 3	Greentown	Child Care Service	PW
Growing By Leaps & Bounds	25 Roosevelt Dr	Hawley	Child Care Service	PW
Lake Run Learning Ctr	23 Roosevelt Dr	Hawley	Child Care Service	PW
Little Playroom	74 Welwood Ave # 101	Hawley	Child Care Service	PW
Mrs Fran's Child Care	410 Spring St	Hawley	Child Care Service	PW
Northeastern Childcare Svc	54 Main Ave	Hawley	Child Care Service	PW
Telespond Adult Day Care	337 Park Pl	Hawley	Day Care Centers-Adult	PW
United Way Of America	731 Welcome Lake Rd	Hawley	Social Services NEC	PW
Wayne County Family Ctr	500 Academy St	Hawley	Social Service & Welfare Organizations	PW
Wayne Early Head Start	500 Academy St	Hawley	Head Start	PW
Ages & Stages Child's Play	696 Elk Lake Dr	Waymart	Child Care Service	WC
Audubon Area Community Svc	PO Box 711	Honesdale	Environmental Conservation/Ecologcl Org	WC
Friendship House	100 4th St # 13	Honesdale	Social Service & Welfare Organizations	WC
Habitat For Humanity	827 Church St	Honesdale	Social Service & Welfare Organizations	WC
Honesdale Senior Citizen Ctr	323 10th St	Honesdale	Social Service & Welfare Organizations	WC
Kids Peace National Ctr	100 4th St # 9	Honesdale	Social Service & Welfare Organizations	WC
Learning & Growing Child Care	60 Milanville Rd	Beach Lake	Child Care Service	WC
Northeastern Child Care Svc	648 Park St	Honesdale	Child Care Service	WC
Resident Host Apartment		Waymart	Social Service & Welfare Organizations	WC
Rileyville Child Care	1920b Hancock Hwy	Honesdale	Child Care Service	WC
Treasure House Child Devmnt	329 Cliff St # 3	Honesdale	Child Care Service	WC
Trehab Center	100 4th St	Honesdale	Social Service & Welfare Organizations	WC
Tri County Human Svc	627 Main St	Honesdale	Social Service & Welfare Organizations	WC
Wayne County Aging Office	323 10th St	Honesdale	Social Service & Welfare Organizations	WC
Wayne County Family Ctr Hnsdl	211 10th St	Honesdale	Human Services Organizations	WC
Wayne County Housing Authority	130 Carbondale Rd	Waymart	Social Service & Welfare Organizations	WC
Wayne County YMCA	105 Park St	Honesdale	Youth Organizations & Centers	WC
Wic Program	273 Grandview Ave	Honesdale	Social Service & Welfare Organizations	WC
YMCA	105 Park St	Honesdale	Youth Organizations & Centers	WC
Boy Scouts Of America	RR 1 Box 327c	Lake Ariel	Youth Organizations & Centers	WS

<b>NAME</b>	<b>ADDRESS</b>	<b>CITY</b>	<b>Primary SIC Description</b>	<b>PWA Comm.</b>
Hamlin Senior Community Ctr		Hamlin	Senior Citizens Service	WS
Lacawac Sanctuary	94 Sanctuary Rd	Lake Ariel	Environmental Conservation/Ecologcl Org	WS
North Pocono Preschool		Lake Ariel	Child Care Service	WS
Northeastern Pa Council Inc	1047 Goose Pond Rd	Lake Ariel	Youth Organizations & Centers	WS
Seeds	Route 590	Hamlin	Social Service & Welfare Organizations	WS
Surgate Embryo & Egg Donors	612 Hamlin Hwy	Hamlin	Social Service & Welfare Organizations	WS
Tiny Tots Learning Group II	84 Mount Cobb Hwy	Lake Ariel	Child Care Service	WS



## d. Statistical Analyses

- Pike/Wayne Region, Pike County and Wayne County
  - Cause of Death, Reproductive Health, Social Determinants (demographics)
    - Exhibit d.1. Rankings
    - Exhibit d.2. Data
  - Original Medicare Use- includes both dual and Medicare only
    - Exhibit d.3. Rankings
    - Exhibit d.4. Data
- Pike/Wayne Communities
  - Cause of Death, Reproductive Health, Social Determinants (demographics)
    - Exhibit d.5. Rankings
    - Exhibit d.6. Data

Exhibit d.1. Cause of Death, Reproductive Health, Social Determinants  
(demographics) - Rankings

Component/Indicator	FORHP Rurality non-Metro			PHC4 Region 6		
	Pike / Wayne Region	Pike	Wayne	Pike / Wayne Region	Pike	Wayne
<b>Cause of Death</b>	60	60	57	66	58	58
Accidents: All	58	76	40	42	62	37
Accidents: Non- Transport	75	80	66	71	75	50
Alzheimer's Disease	86	43	86	100	37	100
Cancer (Malignant Neoplasms): All Other Sites	79	60	100	100	37	100
Cancer (Malignant Neoplasms): Colon and Rectum	51	83	13	85	100	12
Cancer (Malignant Neoplasms): Lung and Bronchus	82	96	40	57	100	37
Cancer (Malignant Neoplasms): Total Malignant Neoplasms	82	96	53	85	100	37
Cerebrovascular Disease	13	20	13	14	25	12
Chronic Lower Respiratory Disease	31	10	56	57	0	62
Diabetes Mellitus	48	73	36	14	62	0
Diseases of Heart: Acute Myocardial Infarction	62	76	53	100	100	87
Diseases of Heart: Ischemic Excl. Acute Myocardial Infarction	75	73	76	85	75	87
Diseases of Heart: Other Heart Disease	48	26	66	28	0	37
Diseases of Heart: Total Diseases of Heart	72	66	76	85	62	87
Influenza & Pneumonia	13	6	36	28	12	87
Intentional Self-harm (Suicide)	96	100	93	85	100	62
Nephritis, Nephrotic Syn. & Nephrosis	51	30	70	85	37	100
<b>Reproductive Health</b>	37	50	24	32	46	18
First Trimester Prenatal Care	56	84	24	43	75	13
Low birth weight: 1,500 to 2,500 Grams	55	66	36	57	62	37
No HS Diploma	3	3	6	14	12	25
Pre-pregnancy - Obese	51	40	53	28	25	37
Pre-pregnancy - Overweight	44	80	10	57	75	12
Pre-pregnancy - Underweight	41	73	13	57	75	12
Pregnancy Smoker	17	10	30	14	12	25
Unmarried: 19 and Under	13	16	3	0	25	0
Unmarried: All ages	51	80	40	14	50	0
<b>Social Determinants</b>	39	40	38	38	39	48
25 +, Less than High School Diploma	6	6	10	14	12	37
Age 65+	89	90	86	85	87	75
Families Below Poverty	10	10	13	28	25	50
Families Below Poverty, Single Head of Household with Children	10	6	20	28	12	62
Female: Age 15-44	24	36	13	14	37	12
Population Not White	93	93	83	57	62	50

Values indicate ranking from 0 to 100 with 100 being the worst rank. Red coloration indicates potential priority, a score of 75 or higher. Analysis by HMS Associates.

**Exhibit d.2. Cause of Death, Reproductive Health, Social Determinants  
(demographics) - Data**

<b>Component/Indicator</b>	<b>Region or County</b>				
	<b>FORHP Rurality non-Metro</b>	<b>PHC4 Region 6</b>	<b>Pike / Wayne Region</b>	<b>Pike</b>	<b>Wayne</b>
<b>Cause of Death</b>					
Accidents: All	5.5	5.2	5.6	6.1	5.2
Accidents: Non- Transport	4.0	3.9	4.3	4.5	4.1
Alzheimer's Disease	3.3	2.9	3.8	2.6	4.7
Cancer (Malignant Neoplasms): All Other Sites	8.6	8.5	9.5	9.0	9.9
Cancer (Malignant Neoplasms): Colon and Rectum	2.0	1.9	2.0	2.6	1.6
Cancer (Malignant Neoplasms): Lung and Bronchus	5.8	5.7	6.7	7.9	5.8
Cancer (Malignant Neoplasms): Total Malignant Neoplasms	21.9	21.9	24.0	25.7	22.7
Cerebrovascular Disease	4.7	4.1	3.9	3.9	3.8
Chronic Lower Respiratory Disease	5.8	5.1	5.4	4.4	6.1
Diabetes Mellitus	3.3	3.7	3.4	3.9	3.0
Diseases of Heart: Acute Myocardial Infarction	6.8	4.1	6.4	7.1	5.9
Diseases of Heart: Ischemic Excl. Acute Myocardial Infarction	8.5	9.8	9.5	9.4	9.6
Diseases of Heart: Other Heart Disease	9.9	11.3	10.0	9.0	10.8
Diseases of Heart: Total Diseases of Heart	25.1	25.2	26.0	25.5	26.3
Influenza & Pneumonia	2.1	1.8	1.7	1.3	1.9
Intentional Self-harm (Suicide)	1.5	1.7	2.2	2.4	2.0
Nephritis, Nephrotic Syn. & Nephrosis	2.3	2.2	2.3	1.9	2.5
<b>Reproductive Health</b>					
First Trimester Prenatal Care	72.0	71.6	72.7	67.4	77.8
Low birth weight: 1,500 to 2,500 Grams	6.1	6.5	6.1	6.4	5.9
No HS Diploma	10.4	10.5	6.6	6.3	6.8
Pre-pregnancy - Obese	27.8	26.7	27.6	27.1	28.1
Pre-pregnancy - Overweight	24.2	24.7	23.9	25.6	22.4
Pre-pregnancy - Underweight	4.0	4.3	3.8	4.5	3.2
Pregnancy Smoker	21.8	19.0	17.3	15.6	19.0
Unmarried: 19 and Under	5.7	5.9	4.4	4.8	4.1
Unmarried: All ages	41.1	49.2	42.3	45.4	39.4
<b>Social Determinants</b>					
25 +, Less than High School Diploma	12.0	10.2	9.6	9.2	10.1
Age 65+	23.6	23.0	25.8	26.0	25.5
Families Below Poverty	9.3	9.5	7.8	7.5	8.1
Families Below Poverty, Single Head of Household with Children	6.7	6.9	5.2	4.8	5.7
Female: Age 15-44	33.1	34.0	30.7	31.2	30.2
Population Not White	6.3	16.0	10.8	13.5	7.7

Values are percents of respective indicators. Values are three year average percent. Data is for 2014 – 2016 three year period. Analysis by HMS Associates.

Exhibit d.3. Original Medicare Use- includes both dual and Medicare only -  
Rankings

Component/Indicator	FORHP Rurality non-Metro			PHC4 Region 6		
	Pike / Wayne Region	Pike	Wayne	Pike / Wayne Region	Pike	Wayne
<b>Average annual total cost risk-adjusted (16)</b>						
0 of the claims-based conditions	27.5	40	16.6	28.5	37.5	25
1 of the claims-based conditions	37.9	33.3	40	28.5	12.5	37.5
2 of the claims-based conditions	41.3	40	43.3	57.1	50	75
3+ of the claims-based conditions	24.1	36.6	6.6	28.5	37.5	0
Acute myocardial infarction	50	88.8	7.4	66.6	71.4	28.5
Alzheimer's Disease, Related Disorders, or Senile Dementia	13.7	26.6	6.6	28.5	50	12.5
Atrial fibrillation	27.5	50	10	42.8	62.5	37.5
Cancer - Colorectal	19.2	25.9	14.8	16.6	42.8	14.2
Cancer - Lung	53.8	66.6	29.6	66.6	100	28.5
Cancer, Colorectal, Breast, Prostate, Lung	17.2	23.3	10	42.8	62.5	12.5
Chronic kidney disease	31	26.6	33.3	57.1	37.5	62.5
Chronic obstructive pulmonary disease	20.6	66.6	10	28.5	75	12.5
Depression	62	86.6	13.3	71.4	100	25
Heart failure	17.2	40	10	42.8	62.5	25
Schizophrenia and other psychotic disorders	18.5	42.8	7.1	14.2	50	0
Stroke/Transient Ischemic Attack	41.3	80	20	71.4	100	12.5
<b>Emergency department visit rate per 1,000 beneficiaries (16)</b>						
0 of the claims-based conditions	20.6	40	3.3	42.8	75	25
1 of the claims-based conditions	6.8	6.6	10	42.8	12.5	50
2 of the claims-based conditions	13.7	10	16.6	57.1	37.5	75
3+ of the claims-based conditions	6.8	13.3	6.6	14.2	25	12.5
All Emergency Department Visits	3.4	10	3.3	14.2	37.5	12.5
Alzheimer's Disease, Related Disorders, or Senile Dementia	68.9	70	36.6	85.7	87.5	25
Atrial fibrillation	13.7	10	33.3	28.5	25	62.5
Cancer - Colorectal	0	0	0	0	0	0
Cancer - Lung	58.6	0	60	42.8	0	50
Cancer, Colorectal, Breast, Prostate, Lung	31	30	30	14.2	12.5	12.5
Chronic kidney disease	17.2	26.6	0	28.5	62.5	0
Chronic obstructive pulmonary disease	17.2	16.6	16.6	28.5	25	25
Depression	65.5	83.3	20	42.8	87.5	12.5
Heart failure	41.3	53.3	33.3	28.5	62.5	25
Schizophrenia and other psychotic disorders	24.1	53.3	16.6	28.5	50	12.5
Stroke/Transient Ischemic Attack	34.4	10	50	57.1	12.5	87.5

Data is for 2016. All provider regardless of location of provider. These claims files are based on services covered by Medicare Part A (hospital insurance) and Part B (medical insurance). Specifically, CMS files used in this analysis include: Inpatient, Skilled Nursing Facility, Hospice, Home Health Agency, Outpatient, Carrier (physician/supplier) and Durable Medical Equipment (DME). Ranking by HMS Associates. 100 is poor score unless otherwise indicated. Red coloration indicates poorest 25 percent of geographies ranked.

Exhibit d.3. Original Medicare Use- includes both dual and Medicare only –  
Rankings - Continued

Component/Indicator	FORHP Rurality non-Metro			PHC4 Region 6		
	Pike / Wayne Region	Pike	Wayne	Pike / Wayne Region	Pike	Wayne
<b>Prevalence - Percent of Beneficiaries (16)</b>						
0 of the claims-based conditions	51.7	36.6	53.3	42.8	25	50
1 of the claims-based conditions	65.5	50	66.6	42.8	12.5	50
2 of the claims-based conditions	86.2	63.3	86.6	71.4	25	75
3+ of the claims-based conditions	34.4	36.6	33.3	57.1	62.5	37.5
Acute myocardial infarction	0	0	0	0	0	0
Alzheimer's Disease, Related Disorders, or Senile Dementia	13.7	46.6	0	14.2	75	0
Atrial fibrillation	79.3	76.6	76.6	57.1	50	50
Cancer - Colorectal	0	0	0	0	0	0
Cancer - Lung	0	0	0	0	0	0
Cancer, Colorectal, Breast, Prostate, Lung	72.4	70	70	42.8	37.5	37.5
Chronic kidney disease	31	40	13.3	28.5	50	12.5
Chronic obstructive pulmonary disease	27.5	10	30	28.5	12.5	37.5
Depression	3.4	6.6	0	14.2	25	0
Heart failure	10.3	10	10	28.5	25	25
Schizophrenia and other psychotic disorders	10.3	13.3	3.3	28.5	37.5	0
Stroke/Transient Ischemic Attack	31	30	30	28.5	25	25
<b>Prevention quality indicator (PQI) - Inpatient use per 100,000 (12)</b>						
Bacterial Pneumonia (PQI #11)	44.8	16.6	63.3	42.8	12.5	75
COPD or Asthma in Older Adults (PQI #5)	41.3	26.6	43.3	42.8	25	50
Dehydration (PQI #10)	48.2	66.6	36.6	28.5	62.5	25
Diabetes Long-term Complications (PQI #3)	68.9	36.6	90	28.5	12.5	62.5
Diabetes Short-term Complications (PQI #1)	41.3	0	60	14.2	0	25
Heart Failure (PQI #8)	51.7	76.6	26.6	28.5	75	12.5
Hypertension (PQI #7)	68.9	73.3	66.6	42.8	50	37.5
Prevention Quality Acute Composite (PQI #91)	34.4	26.6	36.6	14.2	12.5	37.5
Prevention Quality Chronic Composite (PQI #92)	31	46.6	13.3	14.2	25	12.5
Prevention Quality Overall Composite (PQI #90)	27.5	30	23.3	14.2	25	12.5
Uncontrolled Diabetes (PQI #14)	48.2	50	46.6	28.5	37.5	25
Urinary Tract Infection (PQI #12)	41.3	33.3	60	14.2	12.5	25

Data is for 2016. All provider regardless of location of provider. These claims files are based on services covered by Medicare Part A (hospital insurance) and Part B (medical insurance). Specifically, CMS files used in this analysis include: Inpatient, Skilled Nursing Facility, Hospice, Home Health Agency, Outpatient, Carrier (physician/supplier) and Durable Medical Equipment (DME).

Ranking by HMS Associates. 100 is poor score unless otherwise indicated. Red coloration indicates poorest 25 percent of geographies ranked.

Exhibit d.3. Original Medicare Use- includes both dual and Medicare only –  
Rankings - Continued

Component/Indicator	FORHP Rurality non-Metro			PHC4 Region 6		
	Pike / Wayne Region	Pike	Wayne	Pike / Wayne Region	Pike	Wayne
<b>Preventive Services Percent of beneficiaries - Lower rates problematic (10)</b>						
Annual Wellness Visit	24.1	46.6	10	14.2	87.5	12.5
Bone Mass Measurement	24.1	53.3	3.3	57.1	87.5	0
Cardiovascular Disease Screening	75.8	76.6	63.3	85.7	87.5	75
Influenza Virus Vaccine	58.6	66.6	43.3	28.5	37.5	12.5
Initial Preventive Physical Examination (IPPE)	31	53.3	16.6	42.8	75	12.5
Pneumococcal Vaccine	48.2	30	30	14.2	12.5	12.5
Prostate Cancer Screening	31	20	80	28.5	25	75
Screening Mammography	82.7	10	33.3	14.2	0	50
Screening Pap Test	55.1	70	83.3	42.8	25	50
Screening Pelvic Examination	27.5	43.3	56.6	42.8	37.5	50

Data is for 2016. All provider regardless of location of provider. These claims files are based on services covered by Medicare Part A (hospital insurance) and Part B (medical insurance). Specifically, CMS files used in this analysis include: Inpatient, Skilled Nursing Facility, Hospice, Home Health Agency, Outpatient, Carrier (physician/supplier) and Durable Medical Equipment (DME).

Ranking by HMS Associates. Red coloration indicates poorest 25 percent of geographies ranked.

Exhibit d.4. Original Medicare Use- includes both dual and Medicare only –  
Data

Component/Indicator	Region or County				
	FORHP Rurality non- Metro	PHC4 Region 6	Pike / Wayne Region	Pike	Wayne
<b>Average annual total cost risk-adjusted (16)</b>					
0 of the claims-based conditions	\$ 4,590	\$ 4,592	\$ 4,521	\$ 4,548	\$ 4,494
1 of the claims-based conditions	\$ 6,136	\$ 6,106	\$ 6,027	\$ 5,980	\$ 6,074
2 of the claims-based conditions	\$ 6,995	\$ 6,854	\$ 6,868	\$ 6,864	\$ 6,872
3+ of the claims-based conditions	\$ 14,188	\$ 14,076	\$ 13,798	\$ 14,115	\$ 13,480
Acute myocardial infarction	\$ 29,354	\$ 28,214	\$ 29,183	\$ 32,115	\$ 26,250
Alzheimer's Disease, Related Disorders, or Senile Dementia	\$ 20,819	\$ 19,588	\$ 18,880	\$ 19,374	\$ 18,385
Atrial fibrillation	\$ 21,819	\$ 21,064	\$ 20,871	\$ 21,711	\$ 20,030
Cancer - Colorectal	\$ 21,626	\$ 21,021	\$ 20,146	\$ 20,336	\$ 19,955
Cancer - Lung	\$ 34,339	\$ 33,302	\$ 34,193	\$ 35,661	\$ 32,724
Cancer, Colorectal, Breast, Prostate, Lung	\$ 18,642	\$ 17,892	\$ 17,606	\$ 17,917	\$ 17,295
Chronic kidney disease	\$ 19,938	\$ 19,724	\$ 19,478	\$ 19,426	\$ 19,529
Chronic obstructive pulmonary disease	\$ 21,836	\$ 21,496	\$ 21,189	\$ 22,200	\$ 20,178
Depression	\$ 17,119	\$ 16,777	\$ 17,188	\$ 18,442	\$ 15,933
Heart failure	\$ 24,539	\$ 24,010	\$ 23,513	\$ 24,244	\$ 22,782
Schizophrenia and other psychotic disorders	\$ 20,097	\$ 19,748	\$ 18,713	\$ 19,768	\$ 17,658
Stroke/Transient Ischemic Attack	\$ 21,930	\$ 21,237	\$ 21,894	\$ 23,572	\$ 20,216
<b>Emergency department visit rate per 1,000 beneficiaries (16)</b>					
0 of the claims-based conditions	145.7	131.7	118.5	132.0	105.0
1 of the claims-based conditions	308.0	263.6	243.5	234.0	253.0
2 of the claims-based conditions	396.4	332.3	326.0	317.0	335.0
3+ of the claims-based conditions	1054.0	987.8	913.5	939.0	888.0
All Emergency Department Visits	730.0	652.9	614.0	623.0	605.0
Alzheimer's Disease, Related Disorders, or Senile Dementia	2.8	2.9	3.5	4.0	3.0
Atrial fibrillation	8.2	6.8	7.0	6.0	8.0
Cancer - Colorectal	0.1	0.2	0.0	0.0	0.0
Cancer - Lung	0.5	0.6	0.5	0.0	1.0
Cancer, Colorectal, Breast, Prostate, Lung	0.9	1.2	1.0	1.0	1.0
Chronic kidney disease	14.7	12.6	12.0	14.0	10.0
Chronic obstructive pulmonary disease	23.2	17.6	17.0	17.0	17.0
Depression	3.7	4.6	4.5	6.0	3.0
Heart failure	18.3	17.0	18.0	19.0	17.0
Schizophrenia and other psychotic disorders	2.5	3.0	2.0	3.0	1.0
Stroke/Transient Ischemic Attack	12.4	11.1	12.0	11.0	13.0

Data is for 2016. All provider regardless of location of provider. These claims files are based on services covered by Medicare Part A (hospital insurance) and Part B (medical insurance). Specifically, CMS files used in this analysis include: Inpatient, Skilled Nursing Facility, Hospice, Home Health Agency, Outpatient, Carrier (physician/supplier) and Durable Medical Equipment (DME).

Analysis by HMS Associates.

Exhibit d.4. Original Medicare Use- includes both dual and Medicare only –  
Data - Continued

Component/Indicator	Region or County				
	FORHP Rurality non- Metro	PHC4 Region 6	Pike / Wayne Region	Pike	Wayne
<b>Prevalence - Percent of Beneficiaries (16)</b>					
0 of the claims-based conditions	15.65	16.00	15.50	15.00	16.00
1 of the claims-based conditions	12.06	13.22	12.50	12.00	13.00
2 of the claims-based conditions	14.26	15.11	15.50	15.00	16.00
3+ of the claims-based conditions	58.23	55.78	56.50	57.00	56.00
Acute myocardial infarction	1.19	1.11	1.00	1.00	1.00
Alzheimer's Disease, Related Disorders, or Senile Dementia	9.87	9.00	8.50	10.00	7.00
Atrial fibrillation	9.10	9.44	10.00	10.00	10.00
Cancer - Colorectal	1.35	1.22	1.00	1.00	1.00
Cancer - Lung	1.00	1.00	1.00	1.00	1.00
Cancer, Colorectal, Breast, Prostate, Lung	8.23	8.56	9.00	9.00	9.00
Chronic kidney disease	21.90	20.56	20.00	21.00	19.00
Chronic obstructive pulmonary disease	13.65	13.00	12.50	12.00	13.00
Depression	18.13	16.00	13.50	14.00	13.00
Heart failure	14.58	14.00	14.00	14.00	14.00
Schizophrenia and other psychotic disorders	3.19	3.22	2.50	3.00	2.00
Stroke/Transient Ischemic Attack	3.94	4.11	4.00	4.00	4.00
<b>Prevention quality indicator (PQI) - Inpatient use per 100,000 (12)</b>					
Bacterial Pneumonia (PQI #11)	865.5	897.2	768.5	609.0	928.0
COPD or Asthma in Older Adults (PQI #5)	10561.2	10033.8	9088.5	980.0	17197.0
Dehydration (PQI #10)	447.6	449.4	450.0	524.0	376.0
Diabetes Long-term Complications (PQI #3)	103.1	172.2	144.5	89.0	200.0
Diabetes Short-term Complications (PQI #1)	54.2	123.0	34.0	0.0	68.0
Heart Failure (PQI #8)	1408.0	1418.6	1405.5	1542.0	1269.0
Hypertension (PQI #7)	25.9	49.8	39.5	47.0	32.0
Prevention Quality Acute Composite (PQI #91)	1929.7	1989.2	1692.5	1551.0	1834.0
Prevention Quality Chronic Composite (PQI #92)	2835.1	2806.8	2550.0	2722.0	2378.0
Prevention Quality Overall Composite (PQI #90)	4769.5	4795.9	4242.5	4273.0	4212.0
Uncontrolled Diabetes (PQI #14)	44.9	70.2	29.5	35.0	24.0
Urinary Tract Infection (PQI #12)	486.8	540.6	462.5	394.0	531.0

Data is for 2016. All provider regardless of location of provider. These claims files are based on services covered by Medicare Part A (hospital insurance) and Part B (medical insurance). Specifically, CMS files used in this analysis include: Inpatient, Skilled Nursing Facility, Hospice, Home Health Agency, Outpatient, Carrier (physician/supplier) and Durable Medical Equipment (DME).

Analysis by HMS Associates.



Exhibit d.4. Original Medicare Use- includes both dual and Medicare only – Data -  
Continued

Component/Indicator	Region or County				
	FORHP Rurality non- Metro	PHC4 Region 6	Pike / Wayne Region	Pike	Wayne
<b>Preventive Services Percent of beneficiaries - Lower rates problematic (10)</b>					
Annual Wellness Visit	22.7	15.9	15.5	21.0	10.0
Bone Mass Measurement	6.7	5.7	6.0	7.0	5.0
Cardiovascular Disease Screening	57.7	56.8	60.5	61.0	60.0
Influenza Virus Vaccine	44.5	45.6	45.0	46.0	44.0
Initial Preventive Physical Examination (IPPE)	12.0	10.1	10.0	14.0	6.0
Pneumococcal Vaccine	16.5	16.6	15.0	15.0	15.0
Prostate Cancer Screening	15.5	16.2	16.0	14.0	18.0
Screening Mammography	34.2	32.1	30.5	29.0	32.0
Screening Pap Test	6.4	8.1	8.5	8.0	9.0
Screening Pelvic Examination	9.2	9.3	9.5	9.0	10.0

Data is for 2016. All provider regardless of location of provider. These claims files are based on services covered by Medicare Part A (hospital insurance) and Part B (medical insurance). Specifically, CMS files used in this analysis include: Inpatient, Skilled Nursing Facility, Hospice, Home Health Agency, Outpatient, Carrier (physician/supplier) and Durable Medical Equipment (DME).

Analysis by HMS Associates.

Exhibit d.5. - Cause of Death, Reproductive Health, Social Determinants  
(demographics) - Rankings

Component/Indicator	Community							
	Carbondale Area (CA)	Forest City Area (FC)	Pike East (PE)	Pike South (PS)	Pike West (PW)	Wayne Central (WC)	Wayne North (WN)	Wayne South (WS)
<b>Cause of Death</b>	43	29	0	14	86	57	100	71
Accidents: All	14	100	71	42	85	57	0	28
Accidents: Non- Transport	0	100	57	85	71	42	14	28
Alzheimer's Disease	66	33	16	0	0	83	100	50
Cancer (Malignant Neoplasms): All Other Sites	0	71	57	14	42	28	85	100
Cancer (Malignant Neoplasms): Colon and Rectum	16	33	66	100	83	50	0	0
Cancer (Malignant Neoplasms): Lung and Bronchus	28	57	100	85	71	42	0	14
Cancer (Malignant Neoplasms): Total Malignant Neoplasms	0	28	100	85	57	14	42	71
Cerebrovascular Disease	16	0	50	0	100	66	83	33
Chronic Lower Respiratory Disease	42	28	14	100	0	57	85	71
Diabetes Mellitus	85	28	57	100	42	14	0	71
Diseases of Heart: Acute Myocardial Infarction	42	14	85	0	100	57	28	71
Diseases of Heart: Ischemic Excl. Acute Myocardial Infarction	42	100	85	0	14	71	57	28
Diseases of Heart: Other Heart Disease	85	71	14	0	42	28	100	57
Diseases of Heart: Total Diseases of Heart	42	85	57	0	71	28	100	14
Influenza & Pneumonia	50	83	0	0	16	66	100	33
Intentional Self-harm (Suicide)	42	28	14	71	100	0	85	57
Nephritis, Nephrotic Syn. & Nephrosis	83	16	0	0	33	66	100	50
<b>Reproductive Health</b>	71	86	29	100	57	0	43	14
First Trimester Prenatal Care	29	58	72	100	43	0	86	15
Low birth weight: 1,500 to 2,500 Grams	85	28	14	100	42	57	71	0
No HS Diploma	100	42	0	57	71	28	85	14
Pre-pregnancy - Obese	14	71	42	100	0	57	85	28
Pre-pregnancy - Overweight	57	28	100	14	85	0	42	71
Pre-pregnancy - Underweight	16	100	50	66	83	0	0	33
Pregnancy Smoker	100	85	0	14	71	28	57	42
Unmarried: 19 and Under	50	100	16	83	66	0	0	33
Unmarried: All ages	85	57	42	100	71	0	14	28
<b>Social Determinants</b>	86	57	0	100	43	71	29	14
25 +, Less than High School Diploma	71	85	14	57	0	100	28	42
Age 65+	14	57	28	0	100	42	85	71
Families Below Poverty	85	71	0	100	28	57	42	14
Families Below Poverty, Single Head of Household with Children	85	57	0	100	14	71	42	28
Female: Age 15-44	85	42	57	100	0	71	14	28
Population Not White	57	28	85	100	71	42	0	14

Values indicate ranking from 0 to 100 with 100 being the worst rank. Red coloration indicates potential priority, a score of 70 or 75 or higher. Analysis by HMS Associates.

**Exhibit d.6. - Cause of Death, Reproductive Health, Social Determinants  
(demographics) - Data**

Component/Indicator	Community							
	Carbondale Area (CA)	Forest City Area (FC)	Pike East (PE)	Pike South (PS)	Pike West (PW)	Wayne Central (WC)	Wayne North (WN)	Wayne South (WS)
<b>Cause of Death</b>	119.101	129	128.6	#N/A	130	122.53	#N/A	126.31
Accidents: All	3.5	7.5	5.6	5.2	7.3	5.3	3.2	5.1
Accidents: Non- Transport	2.7	5.4	4.4	5.2	5.0	4.3	3.2	3.4
Alzheimer's Disease	4.2	3.9	2.7	#N/A	2.3	5.2	5.3	4.1
Cancer (Malignant Neoplasms): All Other Sites	7.2	9.6	9.2	8.3	8.8	8.6	11.2	11.6
Cancer (Malignant Neoplasms): Colon and Rectum	1.6	1.8	2.0	4.7	2.4	1.9	#N/A	1.0
Cancer (Malignant Neoplasms): Lung and Bronchus	5.6	6.0	8.5	7.8	7.5	5.8	5.3	5.4
Cancer (Malignant Neoplasms): Total Malignant Neoplasms	21.0	22.2	26.2	25.9	24.3	21.1	22.5	24.8
Cerebrovascular Disease	3.9	3.6	3.9	#N/A	4.4	4.0	4.3	3.9
Chronic Lower Respiratory Disease	5.5	4.8	4.8	7.3	3.6	5.7	6.4	6.2
Diabetes Mellitus	4.0	3.0	3.1	7.8	3.1	2.9	2.7	3.1
Diseases of Heart: Acute Myocardial Infarction	4.9	4.5	7.2	3.1	8.1	6.0	4.8	6.0
Diseases of Heart: Ischemic Excl. Acute Myocardial Infarction	9.0	12.0	10.4	7.3	8.5	9.9	9.6	9.0
Diseases of Heart: Other Heart Disease	12.9	11.4	9.4	6.7	10.6	10.0	13.9	10.6
Diseases of Heart: Total Diseases of Heart	26.7	27.8	27.0	17.1	27.2	25.9	28.3	25.7
Influenza & Pneumonia	1.7	2.1	1.3	#N/A	1.5	2.0	3.2	1.5
Intentional Self-harm (Suicide)	1.9	1.8	1.5	2.6	2.9	1.3	2.7	2.5
Nephritis, Nephrotic Syn. & Nephrosis	2.7	1.8	1.4	#N/A	2.3	2.7	3.2	2.5
<b>Reproductive Health</b>	231.9	219.5	191.8	213.7	222.9	201.6	#N/A	199.9
First Trimester Prenatal Care	75.8	70.4	69.8	57.5	72.2	81.2	68.5	76.9
Low birth weight: 1,500 to 2,500 Grams	7.2	6.2	5.1	10.3	6.3	6.3	7.1	4.9
No HS Diploma	10.0	7.7	4.3	8.1	8.5	6.2	9.8	5.8
Pre-pregnancy - Obese	25.7	28.6	26.0	33.0	25.1	28.2	32.2	25.8
Pre-pregnancy - Overweight	22.8	21.0	27.6	20.9	27.3	20.7	22.3	23.2
Pre-pregnancy - Underweight	3.2	6.2	3.9	4.3	4.8	2.6	#N/A	3.4
Pregnancy Smoker	28.1	25.9	12.8	12.8	23.6	16.7	19.0	17.1
Unmarried: 19 and Under	5.6	7.6	3.2	7.4	5.9	2.9	#N/A	4.4
Unmarried: All ages	53.6	46.0	39.1	59.4	49.2	36.7	37.9	38.4
<b>Social Determinants</b>	88.3	87.5	82.5	131.0	83.5	89.1	82.9	81.3
25 +, Less than High School Diploma	9.6	10.7	9.1	12.7	7.4	11.9	8.6	8.7
Age 65+	22.3	25.8	23.9	19.5	32.7	25.4	30.1	28.9
Families Below Poverty	10.7	9.5	6.1	12.6	6.9	8.5	8.2	6.5
Families Below Poverty, Single Head of Household with Children	7.5	6.5	3.7	10.2	3.7	6.6	4.6	4.2
Female: Age 15-44	33.1	30.6	32.2	35.3	27.5	31.9	27.7	28.7
Population Not White	5.2	4.5	7.6	40.7	5.3	4.8	3.6	4.2

Values are percents of respective indicators. Values are three year average percent. Data is for 2014 – 2016 three year period. #N/A equals 0 percent. Analysis by HMS Associates.

**HMS Associates, Getzville, NY**

# Notes